



# TABLE OF CONTENTS

4-15 CUSTOMIZED EXTERIORS

30-37 KITCHEN DESIGN

18-21 CUSTOMIZED INTERIORS

38-39 FAUCETS

22-25 LIGHTING & ELECTRICAL

40-47 BATH DESIGN

26-29 CABINETS & COUNTERS

48-49 UTILITY

# CUSTOMIZED EXTERIORS

A wide selection of framing types are available in both of our model lines ranging from 3/12 vaulted or flat ceilings to 9/12 Cape style roofs. Ask your sales representative for a list of available styles.

More information on our Cape Style Roofs (available in a 9/12 roof pitch) is located on our Expanded Living highlight on page 16.



← If you like this look, check out our 'Almond' or 'Auburn' floor plans!





(Log posts and railings are not included)

3/12 VAULTED CEILING WITH PROW END (AND 6'-0" PORCH)



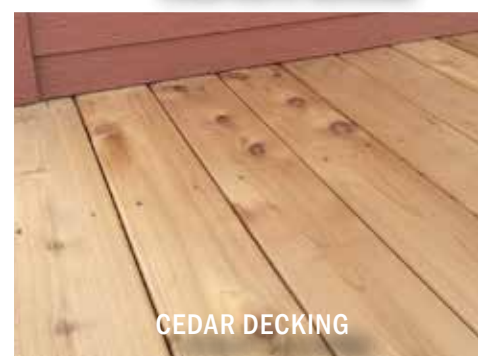
HIPPED ROOF OPTION-5/12 PITCH (shown with a 24' dormer with eyebrow and return eave over triple window box bay)



COMPOSITE DECKING



6/12 ROOF PITCH - TRIPLE WIDE (shown with 24' dormer with eyebrow over recessed entry)



CEDAR DECKING

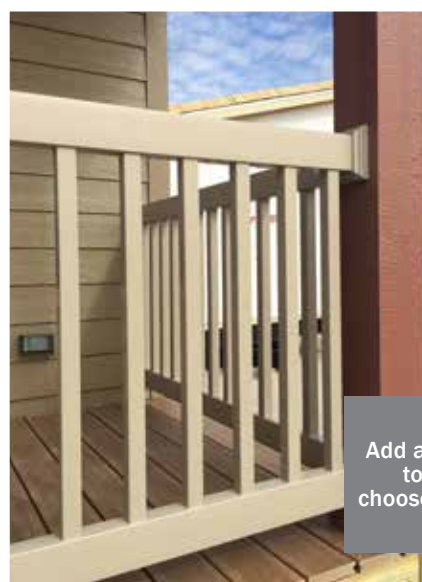


WHITE RAILINGS

Add (6) 36" wide trapezoid windows to the gable end for this look.



3/12 ROOF WITH VAULTED CEILING (available with 8'-0" sidewalls only)



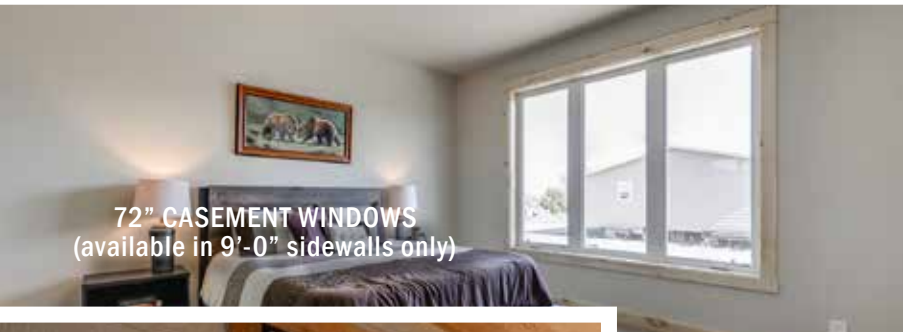
SAND RAILINGS

**Porch Railings**  
Add a 4'-0", 6'-0", or 8'-0" porch to the end of your home and choose column colors and either sand or white railings.

# CUSTOMIZED EXTERIORS

## Windows

Energy efficient vinyl single-hung insulated windows are included in all of our homes. BonnaVilla features Windsor Windows. Custom Windsor windows are available in multiple configurations and sizes to fit different applications. Customers can specify single-hung or casement windows. Casement Windows are available in a white or sand vinyl finish. Single-hung windows are available in white, sand, or a black painted vinyl finish.



72" CASEMENT WINDOWS  
(available in 9'-0" sidewalls only)



BLACK WINDOW OPTION



6036 PICTURE WINDOW  
(shown with transom)



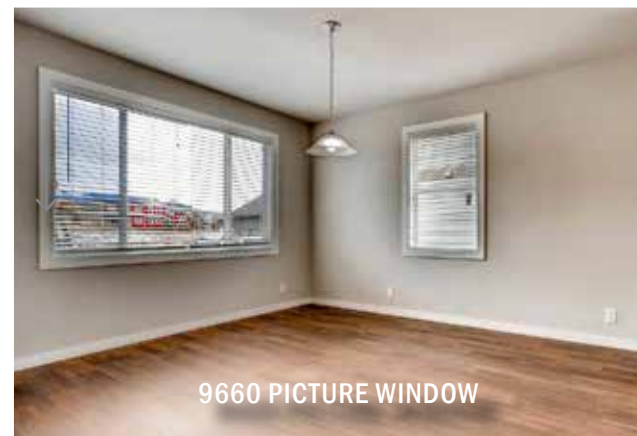
WINDSOR SINGLE-HUNG VINYL

WHITE, SAND, OR BLACK  
PAINTED VINYL



WINDSOR CASEMENT VINYL

WHITE OR SAND



9660 PICTURE WINDOW



2-2436 & 2436  
OBSCURE WINDOWS



Add a Flexible Tube Light  
(commonly used in baths & utility rooms)



18" OBSCURE TRANSOM  
(shown as a set of 3 stacked)



2-3660 CASEMENT WINDOW  
(shown with Ledger Trim)

For additional photos of cabinets & countertops - see pages 26-37



TRANSOM OVER ENTRY DOOR  
(one sidelight shown)

ASK ABOUT OUR CEDAR TRIM PACKAGE  
(SHOWN BELOW)



LARGE TRAPEZOID WINDOWS  
FOR UPPER GABLE OF 9/12  
ROOF



WHITE 2" BLINDS

# CUSTOMIZED EXTERIORS

## Doors

A large selection of exterior doors are available for your new home. Select from white, sand, or woodgrain in a variety of styles. Add either a sliding or swing patio door to create seamless transitions to an exterior deck or living space.



COTTAGE GLASS DOOR  
(shown in White)



WINDSOR SLIDING GLASS  
PATIO DOOR



COTTAGE GLASS DOOR  
(shown in Woodgrain)

The woodgrain door options  
include a dentil accent



1/2 CLEAR GLASS DOOR  
(shown in White)



COTTAGE GLASS w/ SIDELITE DOOR  
(shown in Sand)



PAINTED EXTERIOR DOOR  
(Bronze)

Ask about our other paint  
colors available for the painted  
exterior door option.



WINDSOR 9'-0" SLIDING GLASS PATIO DOOR

# Exterior Door Selections



3 PANEL  
(WHITE)



3 PANEL  
(SAND)



COTTAGE GLASS  
W/DOUBLE SIDELITE (WHITE)



COTTAGE GLASS  
W/SINGLE SIDELITE (WHITE)



FULL GLASS  
(WHITE)



FULL GLASS  
(SAND)



SLIDING GLASS DOOR  
(WHITE, SAND, OR BLACK)



COTTAGE GLASS  
(WHITE)



COTTAGE GLASS  
(SAND)



COTTAGE GLASS  
W/DOUBLE SIDELITE (SAND)



COTTAGE GLASS  
W/SINGLE SIDELITE (SAND)



1/2 CLEAR GLASS  
(WHITE)



1/2 CLEAR GLASS  
(SAND)



SWING PATIO DOOR WITH BLINDS  
(WHITE OR SAND)



3 PANEL  
(MAHOGANY STAIN)



COTTAGE GLASS  
(MAHOGANY STAIN)



COTTAGE GLASS W/DOUBLE SIDELITE  
(MAHOGANY STAIN)



COTTAGE GLASS W/SINGLE SIDELITE  
(MAHOGANY STAIN)



9'-0" SLIDING PATIO DOOR (WHITE, SAND, OR BLACK)



BRONZE



BLACK



MIDNIGHT GREEN



CLASSIC BLUE



BRICK RED

PREMIUM COLORS AVAILABLE IN 3 PANEL, COTTAGE GLASS, COTTAGE GLASS W/SIDELITES  
(WOODGRAIN LOOK ONLY AVAILABLE IN MAHOGANY STAIN)

## Door Hardware



NICKEL BALL HARDWARE  
(EXTERIOR/INTERIOR  
STANDARD)



ORB/BLACK BALL HARDWARE  
(EXTERIOR/INTERIOR OPTION)



NICKEL LEVER HARDWARE  
(INTERIOR OPTION)  
(BONNAVILLA LINE STANDARD)



ORB/BLACK  
LEVER HARDWARE  
(INTERIOR OPTION)

NICKEL OR ORB/BLACK  
EXTERIOR LOOP OPTION



FULL GLASS DOOR  
(shown in White)

# CUSTOMIZED EXTERIORS

## Box Bays

Adding any size of Box Bay can add variation among both the interior and exterior of your home. Choose from any number of window configurations and interior treatments to add that 'something extra' to living rooms, bedrooms, or even kitchen.



4 WINDOW ANGLE BAY  
(shown with 24' dormer with return eave and eyebrow over recessed entry)  
(available in BonnaVilla models only)



3 WINDOW ANGLE BAY  
(shown with transoms)



2 WINDOW BOX BAY  
(shown with board and batten siding)



2 WINDOW BOX BAY  
(shown with 2-3660 windows and 20' dormer with eyebrow)



3 WINDOW BOX BAY (UNMULLED)  
(shown with 24' dormer with return eave and eyebrow)



RECESSED ENTRY

3615 TRANSOM WINDOW

1 WINDOW BOX BAY  
(shown with 10' dormer with return eave)

3 WINDOW BOX BAY  
(shown with transoms and 24' dormer with eyebrow)

2 WINDOW BOX BAY  
(shown with 10' dormer with return eave)





**3 WINDOW FLOOR BAY**  
(shown with transoms)



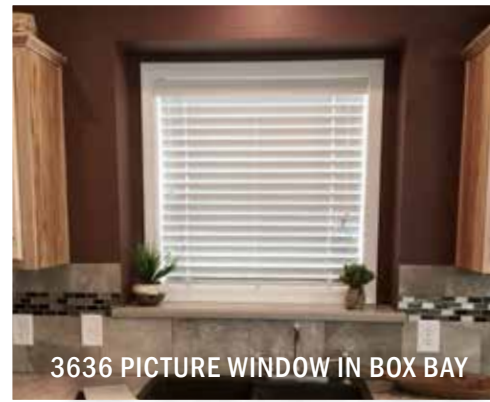
**BOX BAY - KITCHEN SINK**  
2-3636 Windows  
(transoms not available in kitchen box bay)



**2 WINDOW FLOOR BAY**



**4 WINDOW ANGLE FLOOR BAY**  
(available in BonnaVilla models only)



**3636 PICTURE WINDOW IN BOX BAY**



**3 WINDOW ANGLE FLOOR BAY**



**BOX BAY WITH WOOD SEAT**  
(shown with casement windows)

WHETHER THE BOX BAY IS OPEN TO THE FLOOR, HAS A WOOD OR DRYWALL SEAT, OR IF IT HAS ONE, TWO, THREE, OR FOUR WINDOWS CONTAINED WITHIN, YOU CAN CHOOSE FROM DOZENS OF POSSIBILITIES!

# CUSTOMIZED EXTERIORS

## Siding

BonnaVilla offers numerous vinyl siding options including double 4" Dutch Lap, CraneBoard double 7" lap insulated siding, Board and Batten Vinyl Siding, and Vinyl Shake.

Also offered are LP and Hardie painted siding, available in 8" Lap, Vertical Groove Panel, Board and Batten, and Shake profiles along with Prefinished LP ExpertFinish Lap Siding.



SMARTPANEL BOARD & BATTEN shown on a Nordic Dormer with Black Windows

Choose from our standard Sherwin Williams paint colors - or you have the option to choose your own!



LP PAINTED SHAKE SIDING

BELLY BAND ACCENT



LP SMART LAP - 8" SIDING WITH 4" TRIM



LP SMART LAP (8") SIDING WITH CEDAR TRIM PACKAGE AND CEDAR BOARD & BATTEN ACCENT

CEDAR SOFFIT & FASCIA



PORCH W/ CEDAR DECKING, VINYL RAILINGS & CEDAR TRIM PACKAGE



LP VERTICAL GROOVE



ACCENT COLUMNS  
(shown with cedar trim package)



VINYL SHAKE ACCENT  
(in dormer)

VINYL BOARD AND BATTEN SIDING  
(shown on a Nordic Dormer)



SMART LAP BOARD/BATT  
W/ WAINSCOT SIDING



GABLE END -  
EAVE RETURN OPTION



PRE-FINISHED METAL  
SOFFIT/FASCIA



VINYL - DUTCH LAP



PAINTED SMART BOARD  
SOFFIT/FASCIA



CRAFTSMAN COLUMNS



20' DOUBLE DORMER

# CUSTOMIZED EXTERIORS

## Dormers

Adding any one of our various dormers to your home accents different portions of the facade. Add one above a front entry and living room window or over a box bay in a bedroom. Check out our special dormers for vaulted ceilings only.



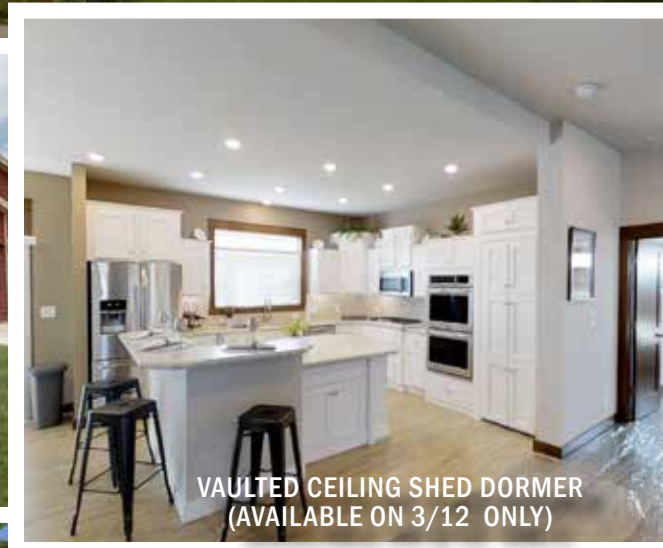
6'-0" SINGLE WINDOW  
CAPE DORMER  
(9/12 ROOF)

9'-0" DOUBLE WINDOW  
CAPE DORMER  
(9/12 ROOF)



10'-0" DORMER  
(5/12 ROOF)

24'-0" DORMER WITH  
RETURN EAVE & EYEBROW  
(5/12 ROOF)



VAULTED CEILING SHED DORMER  
(AVAILABLE ON 3/12 ONLY)

Increase the height of the vaulted ceiling in your living area by selecting a shed roof dormer!



16' DORMER  
WITH RETURN EAVE  
(9/12 ROOF)

27' WALK OUT DORMER WITH  
RETURN EAVE & EYEBROW  
(9/12 ROOF)



10', 16', OR 24' DORMER  
OPTIONAL W/ RETURNS



10', 16', OR 24' DORMER  
W/ RETURN EAVE



16' OR 24' DORMER  
W/ RETURN EAVE AND EYEBROW



16', 20', OR 24' DORMER W/ EYEBROW  
OPTIONAL W/ RETURNS



20'-0" DOUBLE DORMER



20'-0" DOUBLE DORMER  
W/ RETURN EAVE



24'-0" DORMER  
DOUBLE BOX BAY / EYEBROW



10' NORDIC DORMER (8/12 PITCH) W/ SPOKE TRIM  
3/12 FIXED ROOF / SMART SIDING ONLY

**VAULTED CEILINGS ONLY**



3 WINDOW VAULT DORMER  
3/12 FIXED ROOF / VAULTED CEILING



2 WINDOW VAULT DORMER  
3/12 FIXED ROOF / VAULTED CEILING



SHED DORMER  
3/12 FIXED ROOF / VAULTED CEILING

**CAPE ROOFS ONLY**



CAPE COD 6'-0" DORMER W/ SINGLE WINDOW  
9/12 (3660 WINDOW)



CAPE COD 9'-0" DORMER W/ DOUBLE WINDOW  
9/12 (2-3660 WINDOW)



CAPE COD 27'-0" DORMER W/ SINGLE WINDOW  
WALK OUT/OPERABLE  
9/12 ROOF ONLY



**9/12 CAPE PACKAGE**  
*\*Garage built on site by others*



**STAIRS GOING UP TO CAPE LEVEL**



**9/12 CAPE PACKAGE**  
*\*Shown with (2) -3660 double dormers*



18

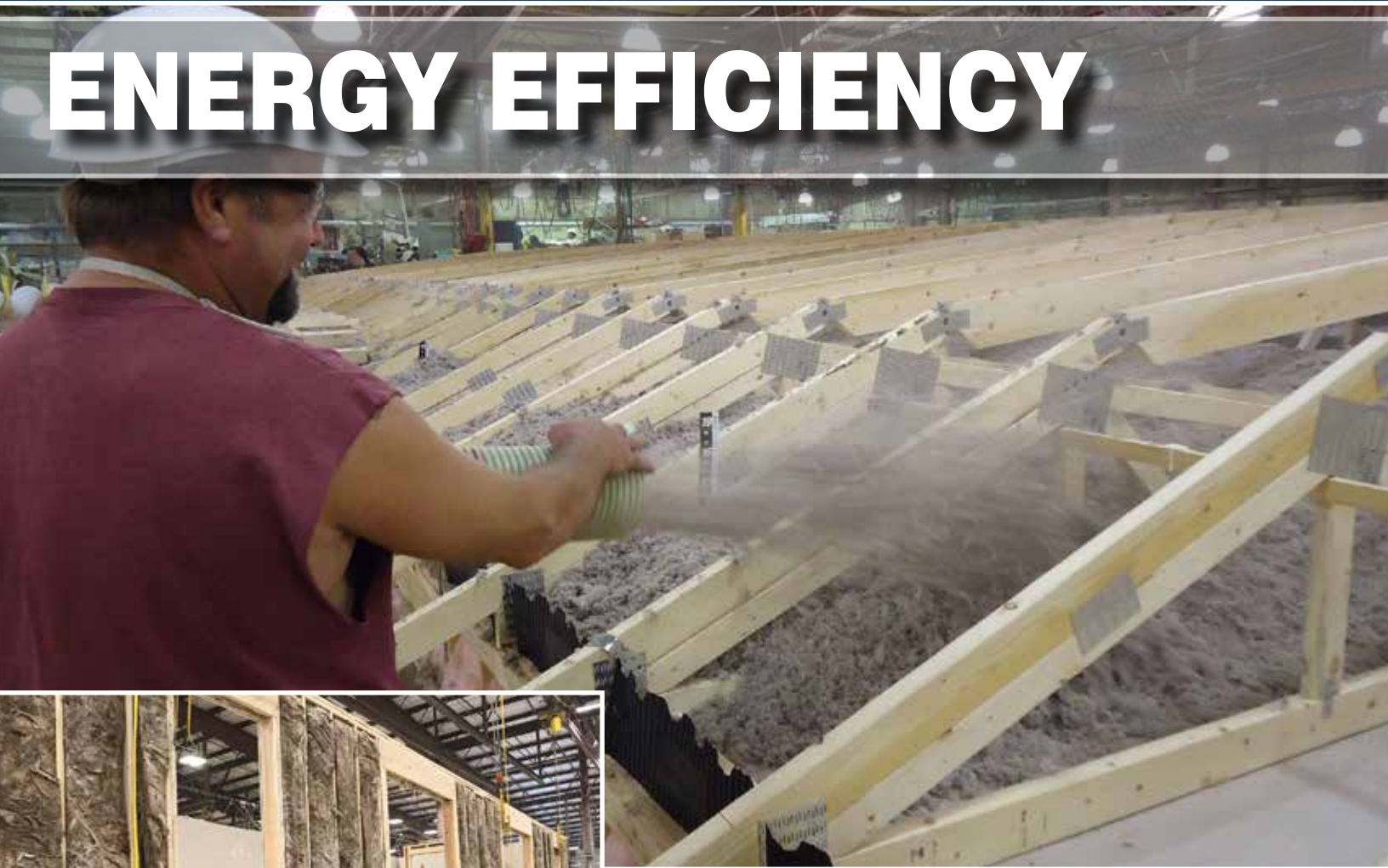
**9/12 CAPE PACKAGE**  
*\* Upstairs finished on site by others*

## 9/12 CAPE PACKAGE

- Hinged Attic Roof Truss in 9/12 Roof Pitch
- Unfinished Upper Level Space (Finish Materials Not Included)
- Stairwell to Upper Floor w/ Door
- Rough-In Plumbing for (1) Upper Level Location (9/12)
- Insulated Floor (Ceiling of Lower Level)
- (1) Window Shipped Loose for Each End of Upper Level (Total of 2)

**DETAILS** make the **DIFFERENCE**

# ENERGY EFFICIENCY



**BATT WALL INSULATION**



**FOAM SEALED PROTRUSIONS**



**GALVANIZED METAL SUPPLY DUCTWORK**

## ENERGY EFFICIENCY FEATURES

### Efficient Vinyl Windows

Ensures energy isn't lost through the windows.

### Blown-in Ceiling Insulation

Allows for better coverage and reduces chances for voids or cold spots.

### Formaldehyde-Free Batt Wall Insulation

Will not settle, which decreases chances of voids or cold spots.

### Foam Sealed Protrusions

Keeps conditioned interior air in, and unconditioned exterior air out.

### Perimeter Floor Insulation

Creates a continuously insulated foundation wall beneath the floor

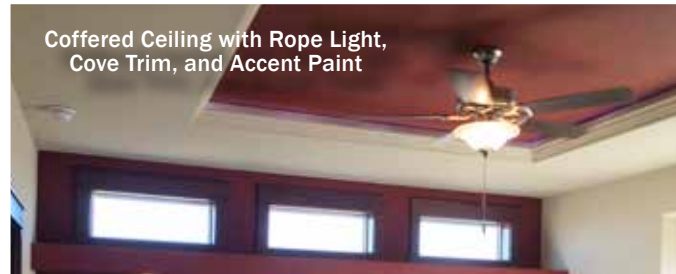
### Metal Supply Air Ductwork

Allows for higher efficiency and lower friction air flow - completely sealed with tape and mastic

# CUSTOMIZED INTERIORS

## Feature Options

Add a custom touch to any room in your home by selecting from these features in our 'Interior Option' list. Whether it's a simple splash of accent paint, an arched entry with can lights, a fireplace, or storage solutions, these features will make your home stand out.



Coffered Ceiling with Rope Light, Cove Trim, and Accent Paint



BEDROOM SOFFIT WITH 3 CAN LIGHTS & 3 TRANSOMS



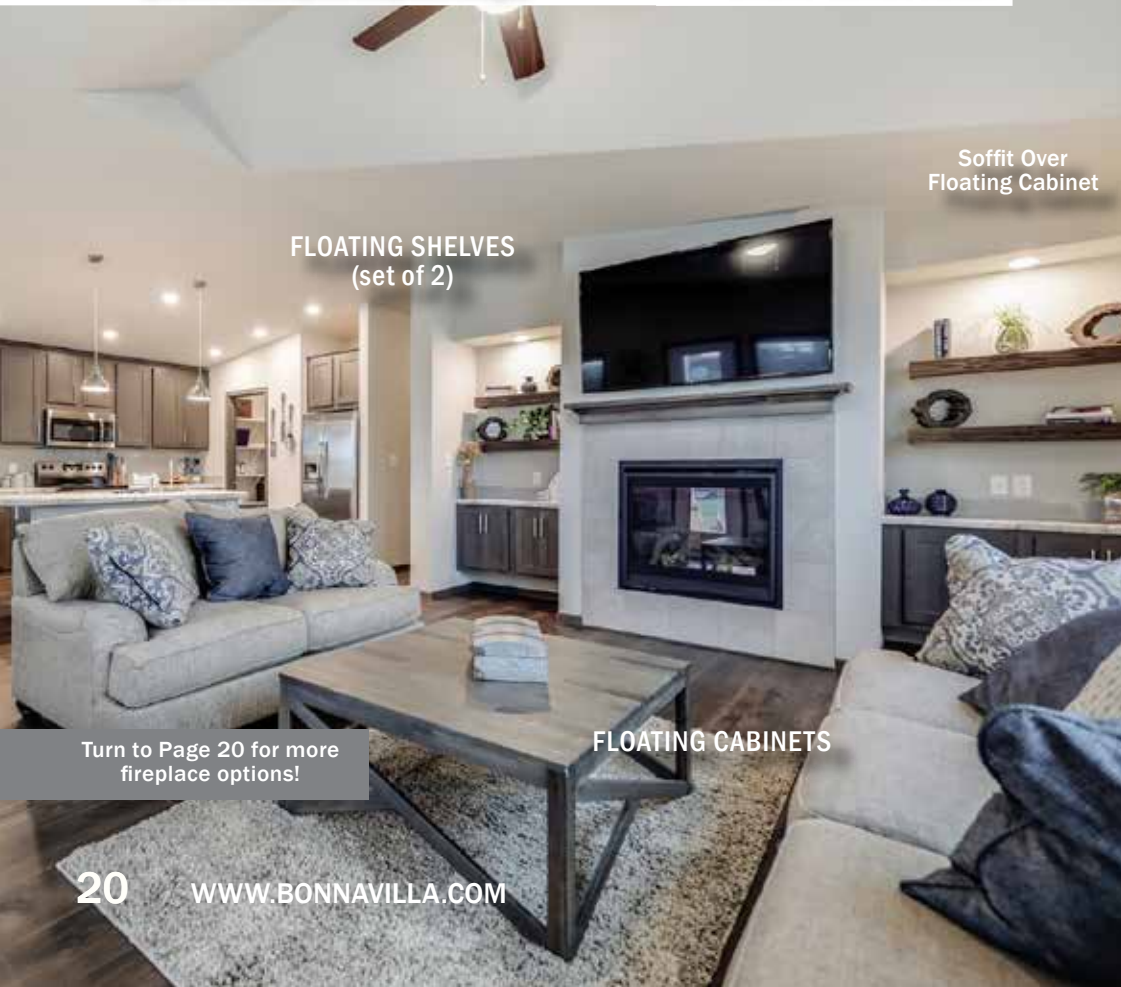
Partial Height Wall/  
Plant Ledge Cap

ARCHED ENTRY  
(Wall Opening & Entry)  
(shown with optional plant ledge)



ARCHED WALL OPENING

Choose from a variety of our interior options to make your home truly unique.

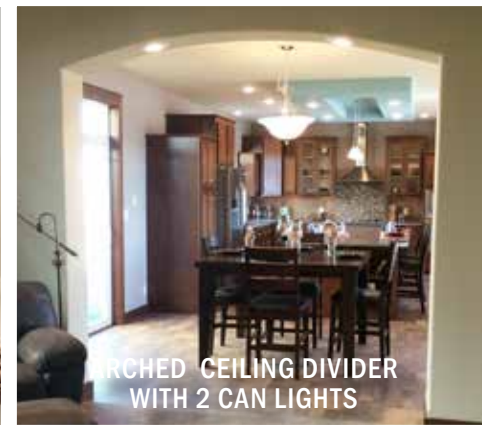


FLOATING SHELVES  
(set of 2)

Soffit Over  
Floating Cabinet

FLOATING CABINETS

Turn to Page 20 for more  
fireplace options!



ARCHED CEILING DIVIDER  
WITH 2 CAN LIGHTS



BARNWOOD BARN DOOR



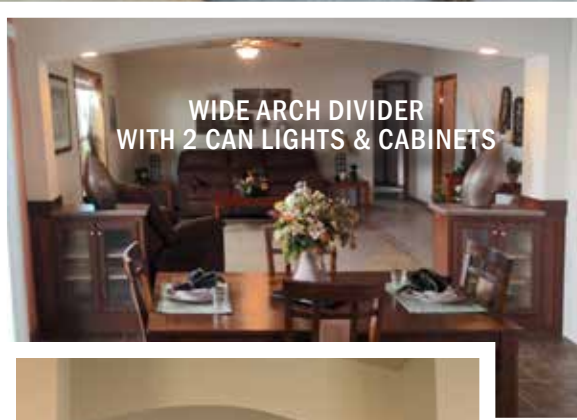
FLOATING SHELVES  
(set of 3)



FLOATING CABINET ENTERTAINMENT CENTER  
(shown with barnwood accent wall)



WIDE ARCH DIVIDER  
WITH 2 CAN LIGHTS & CABINETS

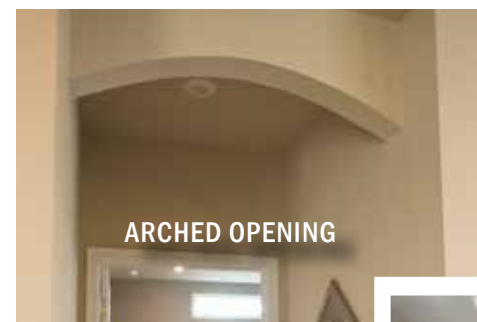


DRYWALL ARCHED OPENING /  
PLANT LEDGE/ COLUMNS



BARNWOOD WALL  
WAINSCOT ACCENT

ARCHED OPENING



BARN STYLE  
DOOR  
HARDWARE



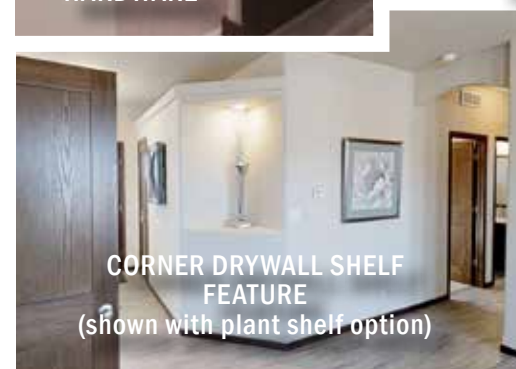
MULTI-LITE GLASS DOOR  
(double door shown)



COFFERED CEILING WITH  
BARNWOOD BEAMS



CORNER DRYWALL SHELF  
FEATURE  
(shown with plant shelf option)



# CUSTOMIZED INTERIORS

## Fireplaces

Add a fireplace option to your home to create warmth and visual focus in any room. Fireplaces come standard with a raised hearth. Choose either stone or one of our tile colors to complete the option.



FULL WALL FIREPLACE WITH FLOATING SHELVES



FULL WALL FIREPLACE WITH TILE SURROUND (with raised hearth, and 2 bookcases)

Choose to vent your gas fireplace horizontally or vertically. (horizontal shown at below)

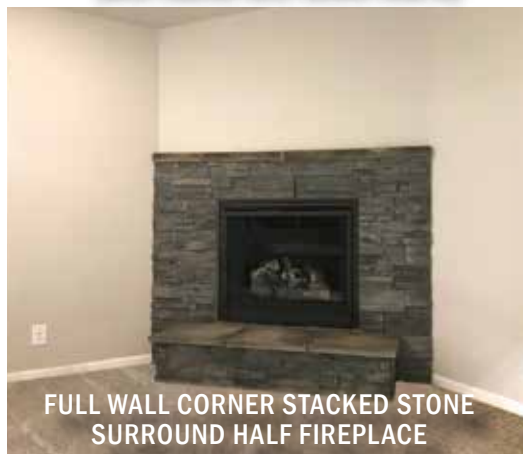


33X24 OPENING IN STONE (with recessed media box)

FULL WALL STACKED STONE SURROUND FIREPLACE (with wood mantel, raised hearth, 2 bookcases)



FULL WALL CORNER STACKED STONE SURROUND-FULL FIREPLACE (with mantel and raised hearth)



FULL WALL CORNER STACKED STONE SURROUND HALF FIREPLACE



1/2 WALL CORNER TILE FIREPLACE

# CLOSETS

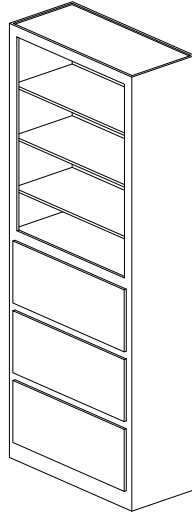
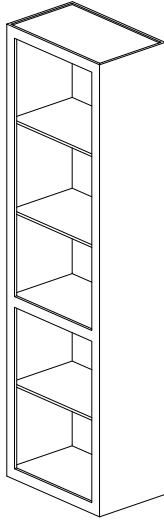
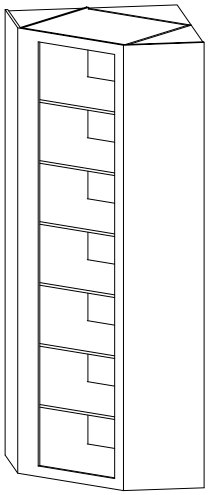
## Storage Solutions

It's your space. Design your closet arrangement and customize your storage to fit your lifestyle.

CORNER SHELF

24" WIDE  
LINEN SHELF

33" WIDE  
DRAWER & SHELF



Available in White Finish Only



CORNER SHELF

DRAWER & SHELF



WOOD SHELVING



WIRE SHELVING



FULL WALL FIREPLACE WITH  
FULL TILE SURROUND



TILED FIREPLACE  
(raised off floor/hearth omitted)



FULL WALL FIREPLACE WITH TILE SURROUND  
(with wood mantel, raised hearth, and 6 floating shelves)

# LIGHTING & ELECTRICAL

## Standard Lighting



EXTERIOR DOOR LIGHT (E)  
BellaVista Doors/  
BonnaVilla rear door light only



MORNING ROOM  
PENDANT (PL)



FLUSH MOUNT 2-bulb (FM)  
(Bedrooms, Master Bedroom Closet,  
Utility Rooms, and Kitchens)



3 LED WALL LIGHT (3LED)  
Commonly installed in  
closets for added light.

BATH VANITY  
(VL)

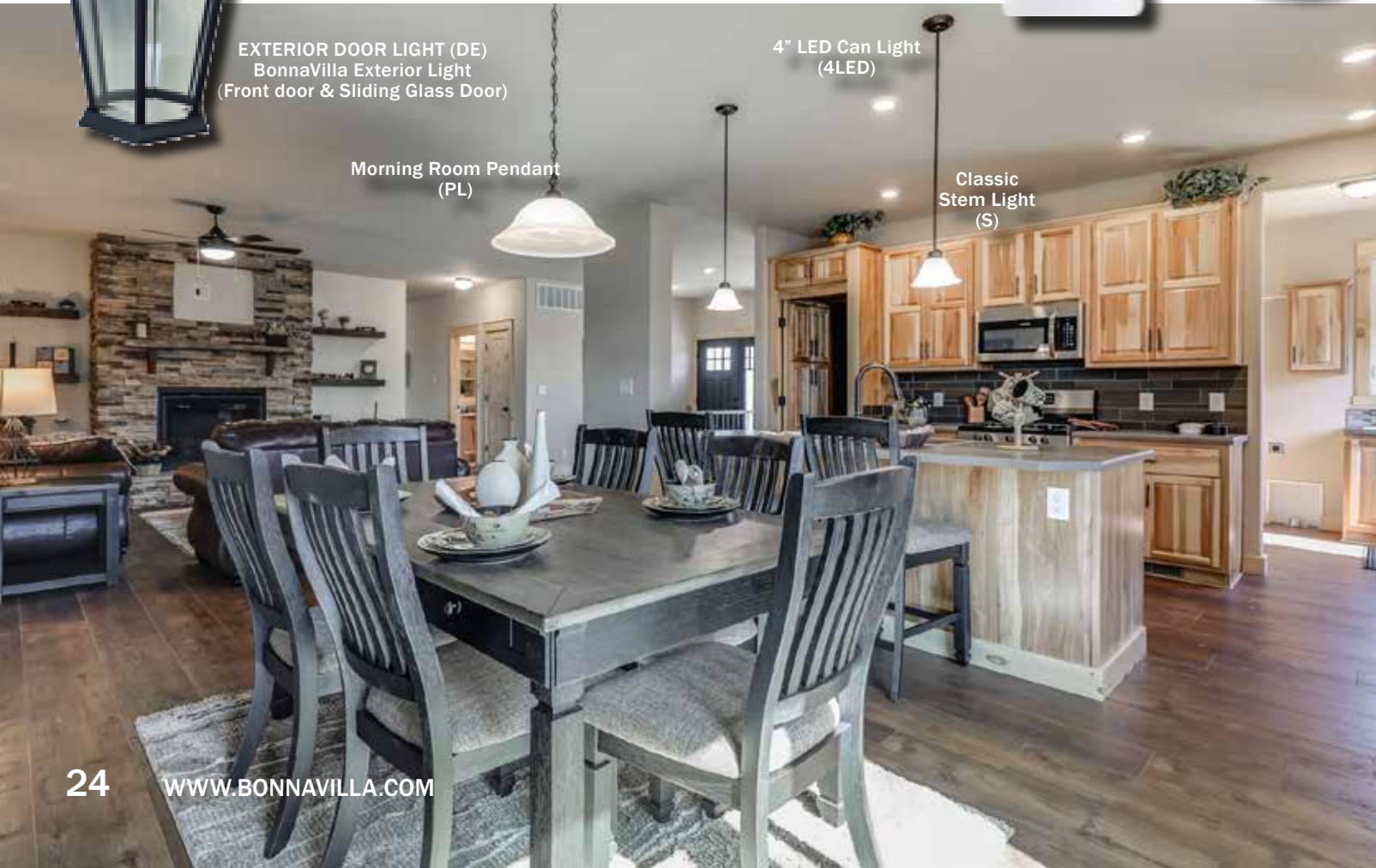


EXTERIOR DOOR LIGHT (DE)  
BonnaVilla Exterior Light  
(Front door & Sliding Glass Door)

4" LED Can Light  
(4LED)

Morning Room Pendant  
(PL)

Classic  
Stem Light  
(S)



# Optional Lighting



EXTERIOR LED  
DOOR LIGHT (DELED)



14" LED LIGHT  
(14LED)



CLASSIC STEM LIGHT  
(S) (Nickel shown)



MODERNO STEM LIGHT  
(S) (Black shown)



LED FAN/LIGHT  
(CFLED)



SCONCE (SC)  
(Stairways/optional light)



EXTERIOR DOOR  
DOWNLIGHT (DL)



4" LED CAN LIGHT  
(4LED)



48" LED (48LED)  
(standard in BonnaVilla  
utility rooms)



14" LED LIGHT  
(14LED)

Kitchen Soffit with Can Lights  
and Stem Lights Option

Moderno  
Stem Light  
(S)

A 4" LED can light is standard in the BonnaVilla line over the sink - optional in the BellaVista line.

ALL LIGHTING AVAILABLE IN NICKEL OR  
BLACK FINISH!

# LIGHTING & ELECTRICAL

With a multitude of electrical and lighting options available, your home can be functional yet stunning. We offer both traditional switches and receipts (toggle style) in our BellaVista line with an option to upgrade (rocker style/decor), which is standard in the BonnaVilla line.

A home comes standard with (2) exterior GFCI receipts - we can add additional upon request.



PANEL BOX  
(optional to drop panel to basement)



Toggle Switches  
(shown in White)  
(standard in BellaVista)



Decor Switches  
(shown in White)  
(standard in BonnaVilla)

A/C DISCONNECT  
(includes double pull 30  
Amp breaker with 10-2  
wire)

PANEL BOX COVER



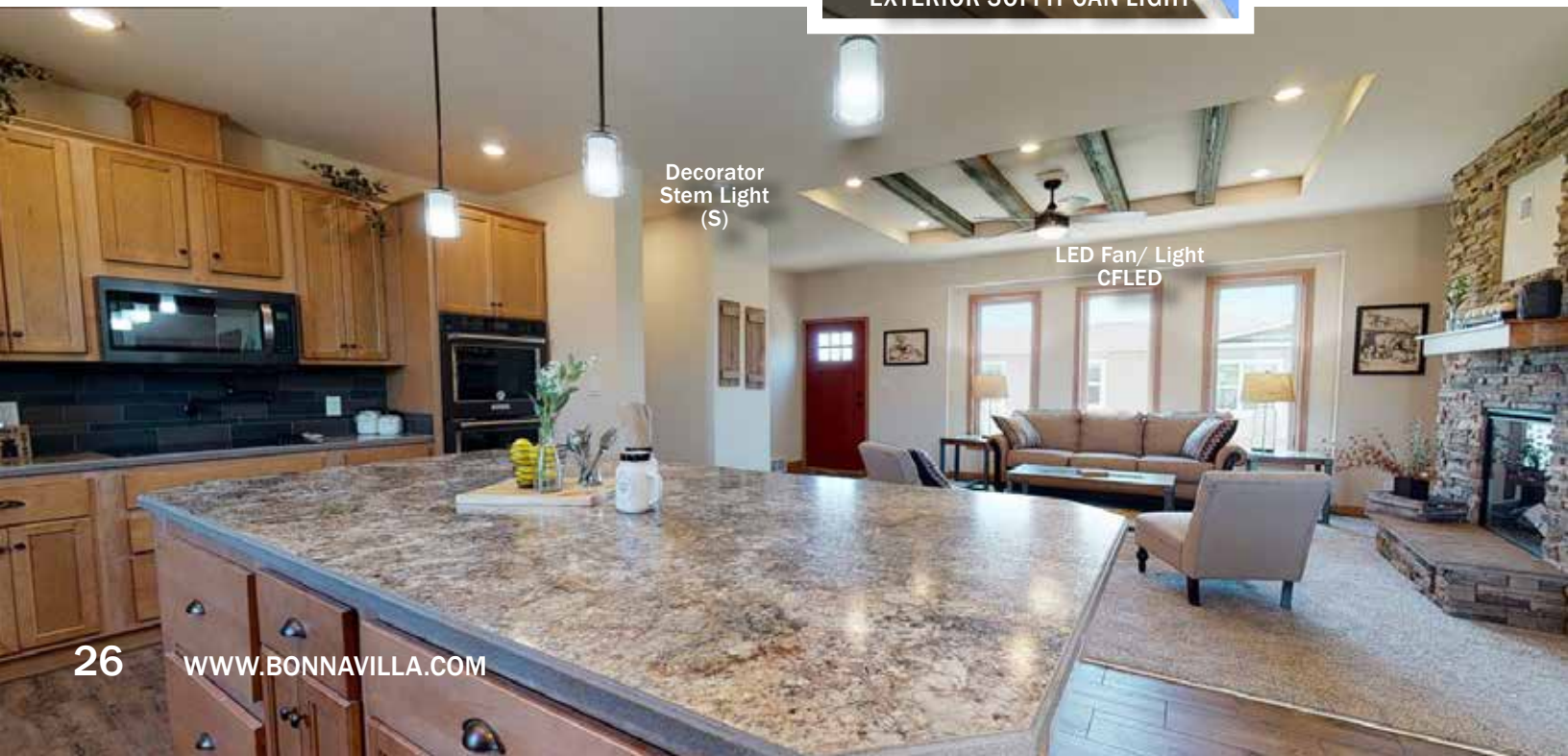
USB OUTLET

Add optional LED can lights to the soffit of the home for accenting different features of the facade.



EXTERIOR SOFFIT CAN LIGHT

Add a USB/recept to an office or countertop area where charging items is a must.



Decorator  
Stem Light  
(S)

LED Fan/ Light  
CFLED

# Decorator Lighting



LED EXTERIOR  
DOOR LIGHT  
(DELED)



DECORATOR STEM  
LIGHT (S)



DECORATOR SCNCE  
LIGHT (DSC)



DECORATOR VANITY  
LIGHT (DVL)



DECORATOR  
PENDANT LIGHT (DPL)



UNDER CABINET LIGHTING



Decorator  
Vanity (DVL)



ARCHED OPENING



ARCHED CEILING AND CAN LIGHTS OVER TUB

IF YOU LOVE THIS BATHROOM, CHECK OUT  
THE JACKSONVILLE FLOOR PLAN!

# CABINETS & COUNTERTOPS

The Cabinetry and Counter Surface selections you have available are countless. BonnaVilla offers laminate countertops with straight profile edge, waterfall edge, and solid surface edge. We also offer solid surface, quartz, and granite countertops. In each of these styles, there are a variety of color selections available.



Hickory cabinetry, 6" backsplash, and black/orb hardware

STONE FX COUNTERTOP WITH SOLID SURFACE EDGE



Cabinetry, 6" mosaic backsplash, and nickel hardware

LAMINATE COUNTERTOP WITH LAMINATE EDGE



STONE FX COUNTERTOPS WITH WATERFALL EDGING

FOR APPLIANCE SELECTIONS - SEE PAGE 36-37



HIDDEN PANTRY

STONE FX COUNTERTOP WITH SOLID SURFACE EDGE

Staggered head cabinets, subway tile backsplash, stone fx countertops with solid surface edging, and nickel hardware

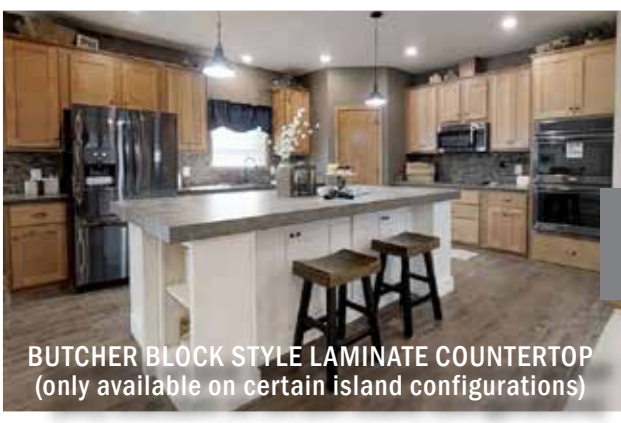


SOLID SURFACE COUNTERTOP WITH SOLID SURFACE BACKSPLASH





QUARTZ COUNTERTOPS



BUTCHER BLOCK STYLE LAMINATE COUNTERTOP  
(only available on certain island configurations)

Like the kitchen shown above? Place a cooktop in the kitchen island and select the Island Rangehood Option to get this look!

See page 36 for additional information on appliances.



GRANITE COUNTERTOPS



SHAKER THERMOFOIL WHITE CABINETRY  
42" UNSTAGGERED HEAD CABINETS

SOLID SURFACE COUNTERTOP  
WITH FULL MOSAIC BACKSPLASH

# CABINETS & COUNTERTOPS

Pair your cabinetry with the counter surface you desire. BonnaVilla offers many different cabinetry wood types and styles to suit your preference including white, oak, dusk oak, hickory, and alder. After choosing cabinetry one can also choose nickel or black hardware package.

BonnaVilla offers many pre-designed built-in features including bookcases, entry hall trees, cubby benches, locker benches, and entertainment centers. If you have a room needing a little built-in flare, these pieces are for you!

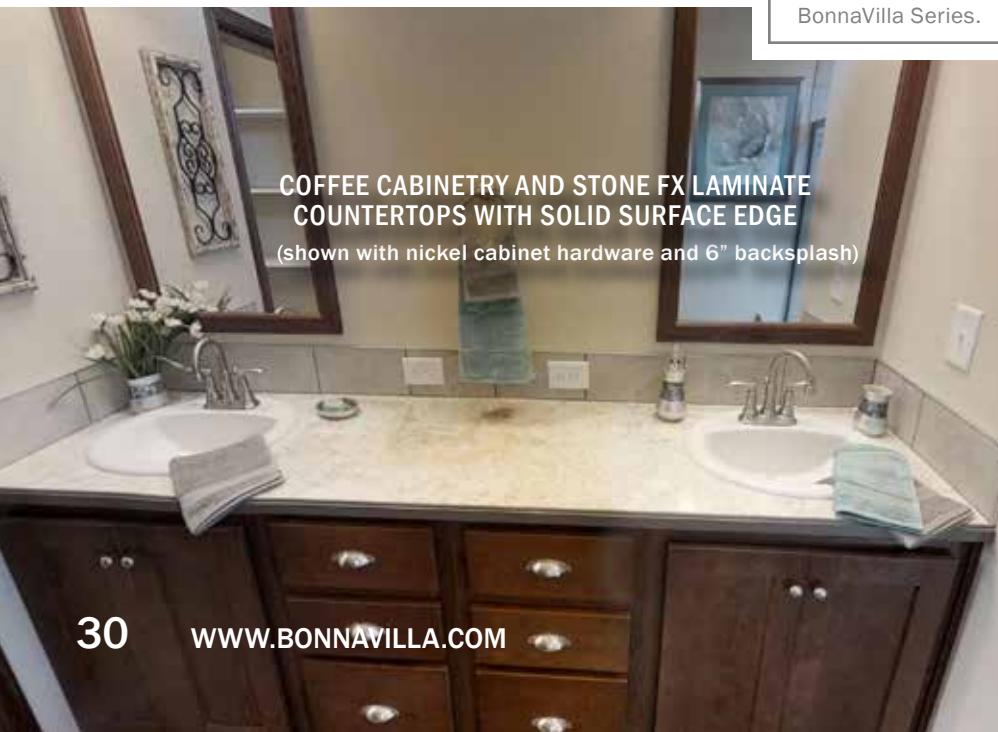


**BAR PULL HARDWARE OPTION**

**METAL TILE EDGING**  
(available in nickel or black)

Dovetailed drawers are optional in the BellaVista Series, standard in the BonnaVilla Series.

**COFFEE CABINETS AND STONE FX LAMINATE COUNTERTOPS WITH SOLID SURFACE EDGE**  
(shown with nickel cabinet hardware and 6" backsplash)



**STRATFORD WHITE CABINETS AND STONE FX LAMINATE COUNTERTOPS WITH SOLID SURFACE EDGE**  
(shown with nickel bar pull hardware and 6" mosaic backsplash)



ENTRY HALL TREE

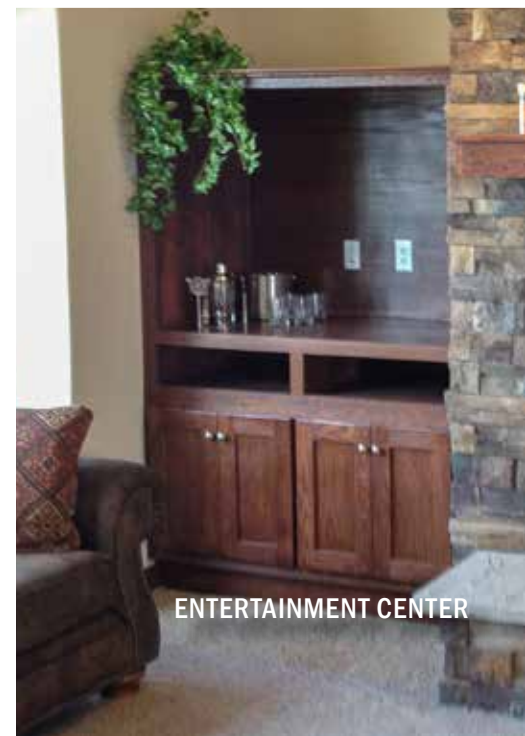


Select two bookcases with a stone to ceiling fireplace to achieve this look. One can choose to place a television above the fireplace as well.

## CABINET CONSTRUCTION FEATURES

- Wood, Dadoed Corner Supports
- Machine Fabricated Cabinet Components
- Dovetailed Drawer Box Construction
- 1/2" Side Panel Box Construction, Dadoed, Glued, and Fastened 100 lb. Rated, Hidden Metal Drawer Glides
- Solid Hardwood 3/4" Face Frames and Styles - Pocket Screwed
- 3/4" Wood Shelf Stock
- Drawer over Door Kitchen Base Cabinet

Add a desk area in a hall nook, den, or extension of the kitchen for a convenient office storage workspace. Add a recessed linen in a hall or bath for a built-in feature.



ENTERTAINMENT CENTER



BOOKCASE

STUDY DESK  
(shown with optional bookcases and additional base and head cabinetry)



RECESSED LINEN

# KITCHEN DESIGN

The kitchen is the gathering place of the home and with our wide variety of available options, you can make it stand out. BonnaVilla offers a vast array of kitchen styles with numerous options to choose from. Whether you're looking at glass cabinet doors, different styles of backsplash tiles, cabinetry accessories, and more - you can make your kitchen truly unique.

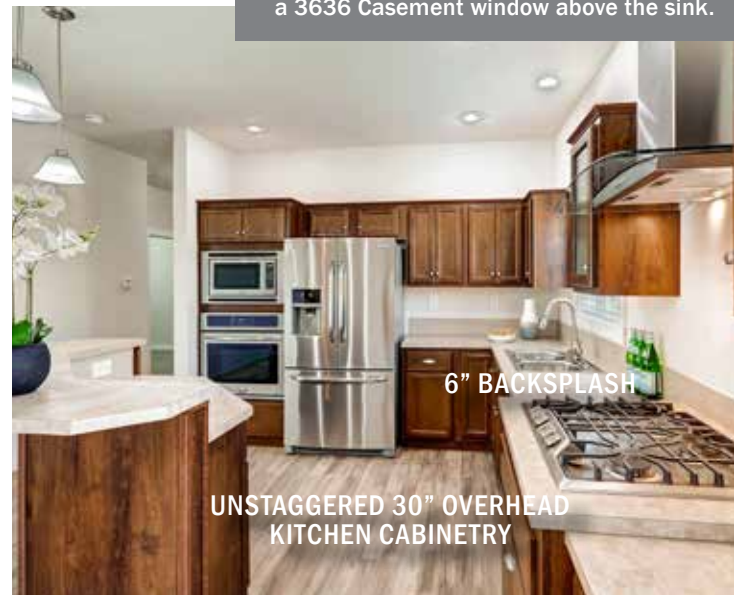


CUTLERY DRAWER

Featured in this custom kitchen are hickory cabinets, solid surface countertops, tile to head cabinets with mosaic accent band, and a 3636 Casement window above the sink.



SOFFIT WITH CAN LIGHTS ABOVE OVERHEAD CABINETS



6" BACKSPLASH  
UNSTAGGED 30" OVERHEAD KITCHEN CABINETS

Tile to the underside of the head cabinet is standard in the BonnaVilla series. Add a 6" mosaic accent for more variation.



TILE TO HEAD CABINETS WITH FULL MOSAIC BEHIND RANGE



STANDARD CROWN MOLDING

SUBWAY BACKSPLASH

UNSTAGGED 42" OVERHEAD KITCHEN CABINETS (shown with standard cabinet crown molding)

The "Glenwood" kitchen showing Stratford Willow cabinetry, tile to the head cabinets with subway tile, and stone fx laminate countertops.



# KITCHEN STORAGE SOLUTIONS



25 cu.ft. Refrigerator w/ Bottom Freezer (shown with a refrigerator side panel) see page 36-37 for more appliances

# KITCHEN DESIGN

With a variety of cabinet styles, counter surfaces, fixtures, and appliances to choose from, every home built in our factory is unique and customized to the homeowner. Whether your dream design theme is a mountain retreat or a refreshing modern escape, our color schemes can help you achieve the look you desire.

A multitude of combinations can be achieved with different counter surfaces and tile combinations. Check out a few of the styles available in the kitchens on these few pages!



VEGGIE SINK



SINGLE BOWL STAINLESS STEEL SINK



COMPOSITE KITCHEN SINK  
(available in White, Black or Concrete)



APRON STYLE FARM SINK  
(available in White or Black)



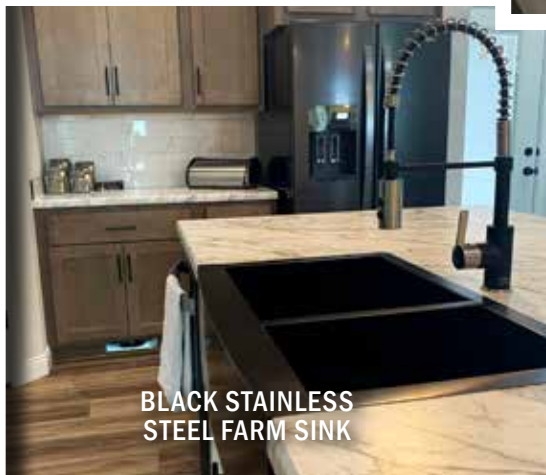
UNDERMOUNT SINK - SINGLE BOWL  
STAINLESS STEEL SINK  
(quartz countertop)



UNDERMOUNT SINK - STAINLESS STEEL  
(solid surface countertop)



UNDERMOUNT SINK - WHITE  
(solid surface countertop)



BLACK STAINLESS  
STEEL FARM SINK

## Utility Sink

ALL SURFACES



Mustee Model 10  
Fiberglass Utility Sink

# Kitchen Sink Options

## LAMINATE



Teka - 22" Stainless Steel - 9" Deep  
(BonnaVilla standard)



Bala 482-0253  
Drop In Single Bowl  
Stainless Steel



Karran QT-711  
Drop In Double Bowl Composite



Worldwide KSxxSM-2W/KSxxSM-2B  
Acrylic Farm Sink



StoneCrest SC32200C  
Double Bowl Farm Sink  
Stainless Steel/Black Stainless

## SOLID SURFACE



Karran E-350/A-350  
Undermount Double Bowl



Karran E-340/A-340  
Undermount Single Bowl

## GRANITE/QUARTZ



Karran U-6040R  
Undermount Double Bowl  
Stainless Steel



Karran U-3018  
Undermount Single Bowl  
Stainless Steel



Karran QU-711  
Undermount Double Bowl  
Composite

# Veggie Sink Options

## LAMINATE



Dayton D11719  
Stainless Steel



Karran QX-680  
Composite

## SOLID SURFACE



Karran E-315  
Undermount  
Stainless Steel



Karran Del Mar  
Undermount  
White

## GRANITE/QUARTZ



Karran U-1517  
Undermount  
Stainless Steel



Karran QX-680  
Undermount  
Composite

# Bath Sink Options

## LAMINATE



StoneCrest SC53E  
Ceramic Rectangle Basin



Delray CH640  
China Vessel Lavatory

## SOLID SURFACE ONLY



Karran A-309  
Undermount Vanity Sink

## GRANITE/QUARTZ



Karran VC-105  
Undermount Vanity Sink

# KITCHEN DESIGN

## ISLANDS

The center of the kitchen is the hub of activity. An island counter surface is extremely helpful for food preparation, serving, and can double as an informal dining area. BonnaVilla has more than 35 island designs available for you to choose from. With different cabinetry options paired with your choice of countertop styles and colors - the variety of looks are endless.



ILR23 KITCHEN ISLAND  
(shown below with wine cooler)



IL18 KITCHEN ISLAND



IL18 KITCHEN ISLAND  
(shown with butcher block style laminate countertop)



IL12 KITCHEN ISLAND  
(shown with cooktop in island)



ILR22 KITCHEN ISLAND  
(ILR06 removes sink and dishwasher)



ILR05 KITCHEN ISLAND





ILR24 KITCHEN ISLAND  
(IL05 removes sink and dishwasher)

FOR ADDITIONAL ISLAND CONFIGURATIONS - CONTACT YOUR LOCAL SALES REPRESENTATIVE!



IL31 KITCHEN ISLAND



ILR08 KITCHEN ISLAND



IL22 KITCHEN ISLAND



IL13 KITCHEN ISLAND



IL11 KITCHEN ISLAND



TILE BACK ON ISLAND



FARMHOUSE ISLAND BARBACK  
(adds farmhouse wainscoting to islands)



IL16 KITCHEN ISLAND



ISLAND RANGEHOOD

IL17 KITCHEN ISLAND

MICROWAVE/30" ELECTRIC WALL OVEN



IL14 KITCHEN ISLAND

# KITCHEN DESIGN

## APPLIANCES



FULL SIZE, SINGLE DOOR REFRIGERATOR/FREEZER COMBO

DISHWASHERS



5 CYCLE DISHWASHER (STD TUB)

RANGES



ELECTRIC SELF-CLEAN CERAMIC TOP RANGE



GAS SELF-CLEAN RANGE



GAS SLIDE-IN RANGE



ELECTRIC SLIDE-IN RANGE

REFRIGERATORS



25 CU.FT. W/ ICE SIDE-BY-SIDE REFRIGERATOR



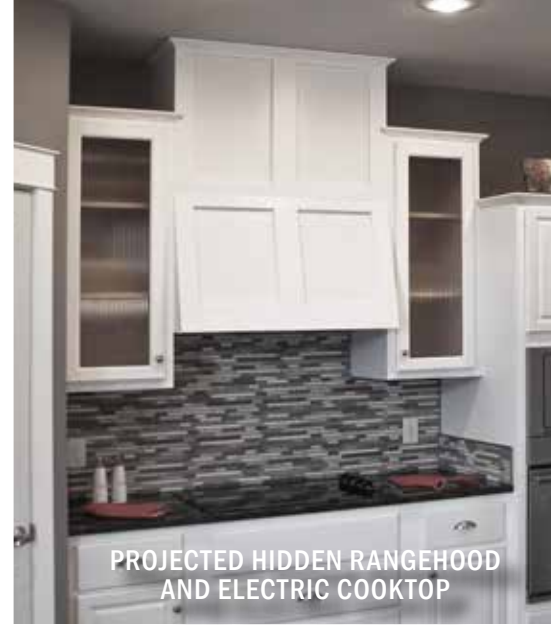
25 CU.FT. W/ ICE FRENCH DOOR REFRIGERATOR



FULL SIZE, SINGLE DOOR REFRIGERATOR/FREEZER COMBO

AVAILABLE FINISHES

● Stainless Steel



PROJECTED HIDDEN RANGEHOOD AND ELECTRIC COOKTOP



CURVED GLASS CHIMNEY RANGEHOOD

GAS COOKTOP

MICROWAVE/30" WALL OVEN



DECORATIVE HIDDEN RANGEHOOD AND GAS COOKTOP

Microwave vented to the exterior of the home (instead of recirculating)

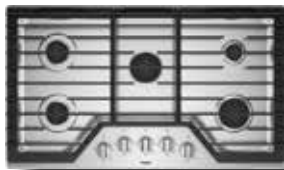


CHIMNEY RANGE HOOD

OPTIONAL APPLIANCE UPGRADES AVAILABLE (STAINLESS STEEL)



GAS STAINLESS COOKTOP BUILT IN CABINET W/ DRAWERS



36" GAS STAINLESS COOKTOP BUILT IN CABINET W/ DRAWERS



ELECTRIC COOKTOP BUILT IN CABINET W/ DRAWERS BLACK ONLY



36" ELECTRIC COOKTOP BUILT IN CABINET W/ DRAWERS BLACK ONLY



CHIMNEY RANGE HOOD (STAINLESS STEEL ONLY)



MICROWAVE (BUILT-IN CABINET)



MICROWAVE (OVER THE RANGE)



CURVED GLASS CHIMNEY RANGE HOOD (STAINLESS STEEL ONLY)



WINE COOLER



30" SINGLE ELECTRIC WALL OVEN (IN CABINET)



30" DOUBLE ELECTRIC WALL OVEN (IN CABINET)



30" MICROWAVE & OVEN (IN CABINET)



ISLAND RANGE HOOD (STAINLESS STEEL ONLY)

# FAUCETS

Whether you like the appearance of nickel or black we offer a variety of faucets in either finish.



NICKEL LAVATORY FAUCET



NICKEL HIGH-ARCH KITCHEN FAUCET

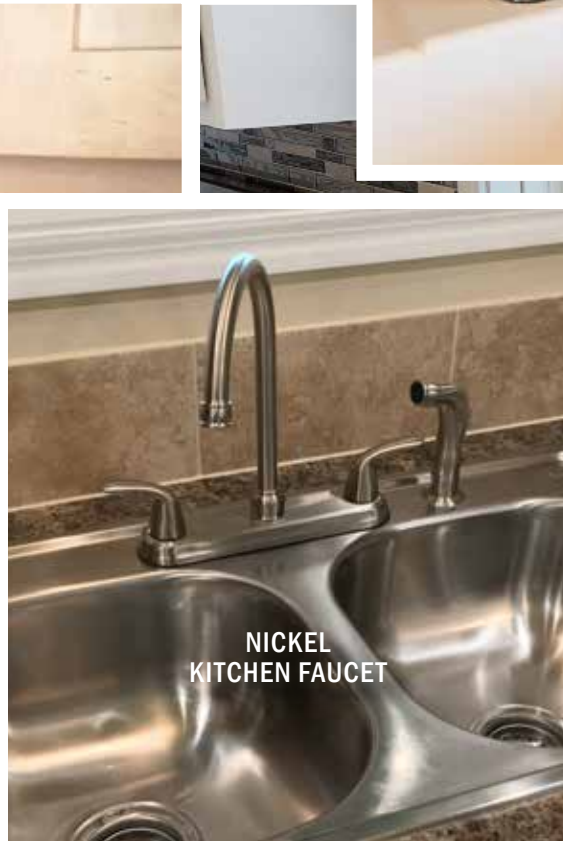


ARTISAN BAR/UTILITY FAUCET

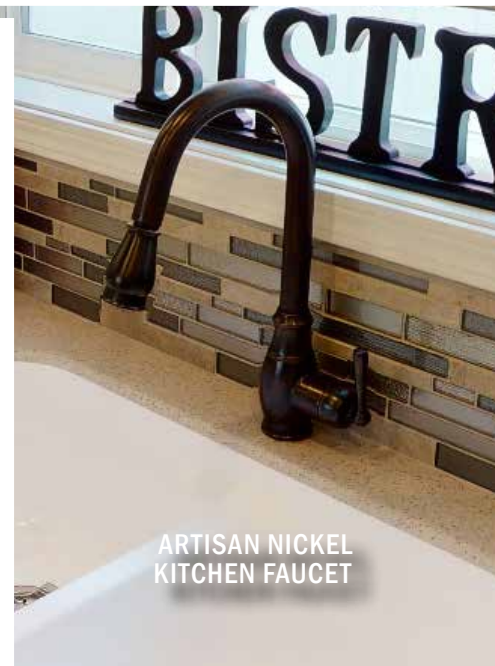
SEE ADDITIONAL PHOTOS OF LAVATORY, SINK, BATHTUB, AND SHOWER FAUCETS SHOWN THROUGHOUT THE KITCHEN AND BATH DESIGN SECTIONS!



POT FILLER



NICKEL KITCHEN FAUCET



ARTISAN NICKEL KITCHEN FAUCET

Standard Faucets (Brushed Nickel or Optional Black)



LAVATORY FAUCET

TUB/SHOWER FAUCET

TUB FAUCET

KITCHEN FAUCET

HIGH-ARCH FAUCET (Upgrade)

4" CENTER BAR/UTILITY

Artisan Faucets (Brushed Nickel or Black)  
(Upgrade Package)



LAVATORY FAUCET

TUB/SHOWER FAUCET

TUB FAUCET

KITCHEN FAUCET

BAR/UTILITY FAUCET

Optional Faucet Upgrades



SINGLE LEVER LAVATORY FAUCET

SINGLE LEVER FAUCET (VESSEL SINK)

POT FILLER (W/ COOKTOP OR SLIDE-IN RANGE ONLY)

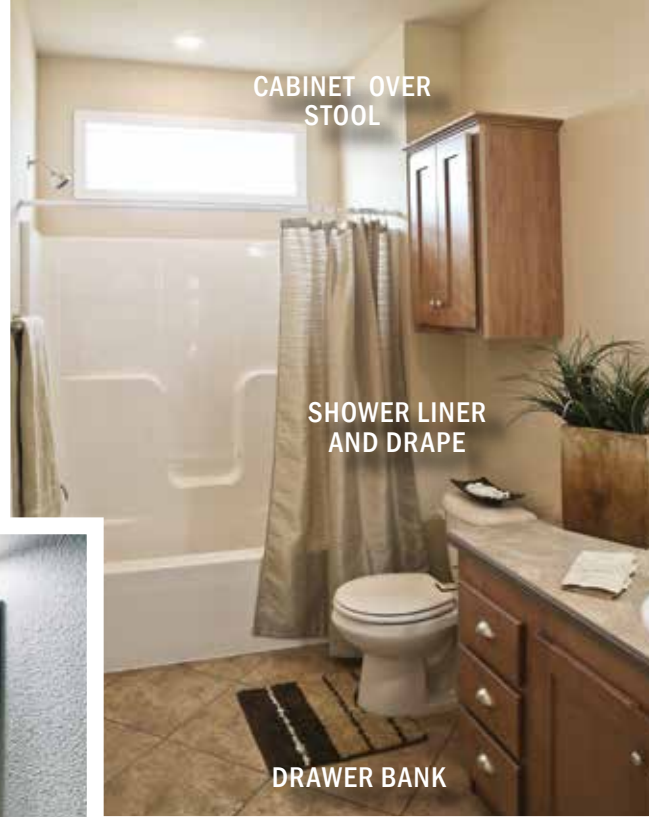
SPRING-PULL DOWN KITCHEN FAUCET

HANDHELD SHOWERHEAD

RAINFALL SHOWERHEAD

# BATH DESIGN

A bathroom is to be functional yet a private retreat. With our many options available one can choose from a variety of layouts, fixtures, hardware, and finish selections. Don't forget to add extra drawer banks or liners for added storage space.



CABINET OVER STOOL

SHOWER LINER AND DRAPE

DRAWER BANK



60" FIBERGLASS TUB/SHOWER

21" MIRROR WITH WOOD TRIM

LINEN CABINET

ELONGATED STOOL



21" MIRROR WITH STANDARD TRIM

The Grand Vanity includes deeper vanity cabinets and linen cabinets on top of the counter.

The Monogram Vanity includes 36" tall vanities (with cubby space below) on furniture leg pedestal bases, a raised 42" center drawer bank, and a center cabinet on the counter.



GRAND VANITY



MONOGRAM VANITY

**LINEN CABINET**  
(available in 15", 18", 21" 27",  
30", 33", and 36" widths)

Add a linen cabinet  
or a linen cabinet  
with drawers for  
additional storage in  
your bathroom.

2436 OBSCURE  
WINDOW

42" TRANSOM

60" FIBERGLASS SHOWER (NICKEL)

Add a bathroom window!  
We offer single-hung clear,  
single-hung obscure, fixed,  
or transom sizes!

ENCLOSED STOOL COMPARTMENT

RECTANGLE LAVATORY SINK

Like the look  
of this vanity?  
See more Oasis  
Bathroom Options  
on page 46!

21" MIRROR  
WITH SQUARE TRIM

PURCHASED  
MIRRORS

DRAWER LINEN CABINET

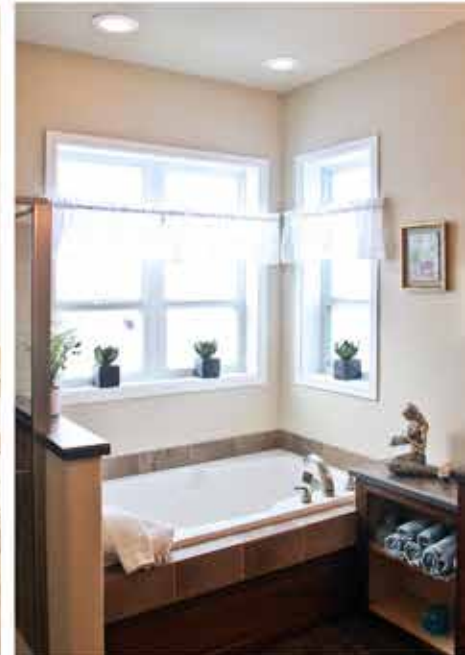
PEDESTAL SINK

OASIS MIRROR WALL VANITY

VESSEL SINK

# Monogram Bathroom

**DETAILS** make the **DIFFERENCE**



## Monogram Bathroom Package

- **MONOGRAM VANITY**
  - 36" TALL VANITIES W/ LOWER CUBBIES ON FURNITURE LEG PEDESTALS
  - RAISED 42" CENTER DRAWER BANK (EXTRA DEEP)
  - CENTER CABINET ON THE COUNTERTOP WITH RECEIPT
  - PICTURE FRAMED MIRRORS
- **MONOGRAM SHOWER & 60" DROP IN TUB**
  - 48" SHOWER WITH TILE SURROUND WITH MOSAIC BAND
  - PARTIAL GLASS WALL ON ONE SIDE
  - 60" DROP IN TUB
  - (1) CAN LIGHT OVER SHOWER / (2) CAN LIGHTS OVER TUB
- **ADDITIONAL AMENITIES**
  - (2) 2436 AND (1) 2436 TEMPERED OBSCURED WINDOWS OVER THE TUB
  - OPEN CABINET CUBBY WITH COUNTERTOP



# GRAND BATHROOM

DETAILS make the DIFFERENCE



## GRAND BATHROOM OPTIONS

- **GRAND TUB OPTION**
  - EXTENDED DROP-IN TUB DECK SURROUND (LAMINATE COUNTERTOP AND EDGE)
  - (2) STORAGE CABINETS, ONE ON EACH END OF TUB DECK
  - OPEN CUBBY UNDER STORAGE CABINETS
- **GRAND VANITY OPTION**
  - EXTENDED DEPTH DOUBLE VANITY WITH (2) DRAWER BANKS
  - (2) STORAGE CABINETS ON TOP OF COUNTERTOP ABOVE DRAWER BANKS
- **GRAND SHOWER OPTION**
  - 8'X4' GRAND TILE SURROUND SHOWER WITH SEAT
  - (1) RAINFALL SHOWER HEAD AND (1) HANDHELD SHOWER HEAD
  - (2) CAN LIGHTS IN CEILING ABOVE SHOWER
  - FULLY ENCLOSED WALL OR PARTIAL GLASS WALL ENCLOSURE

# BATH DESIGN

Depending on your budget and space requirements, we offer a variety of tubs and showers to suit your preference. Whether you would prefer a 72" ultra tub, a 60" drop in tub, or corner tub, our designs can accommodate your needs. Don't prefer a tub? Add one of our many showers or omit the tub to gain additional vanity space instead.



60" TUB/SHOWER  
W/ TILE SURROUND

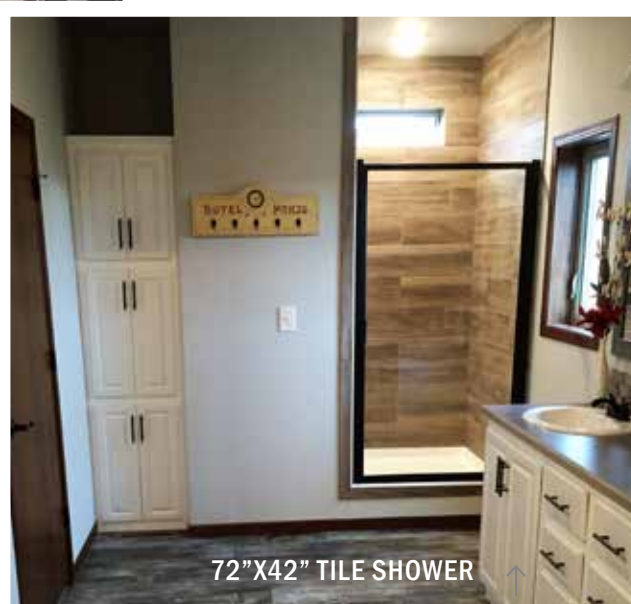


Add a 36" fixed window for added natural light

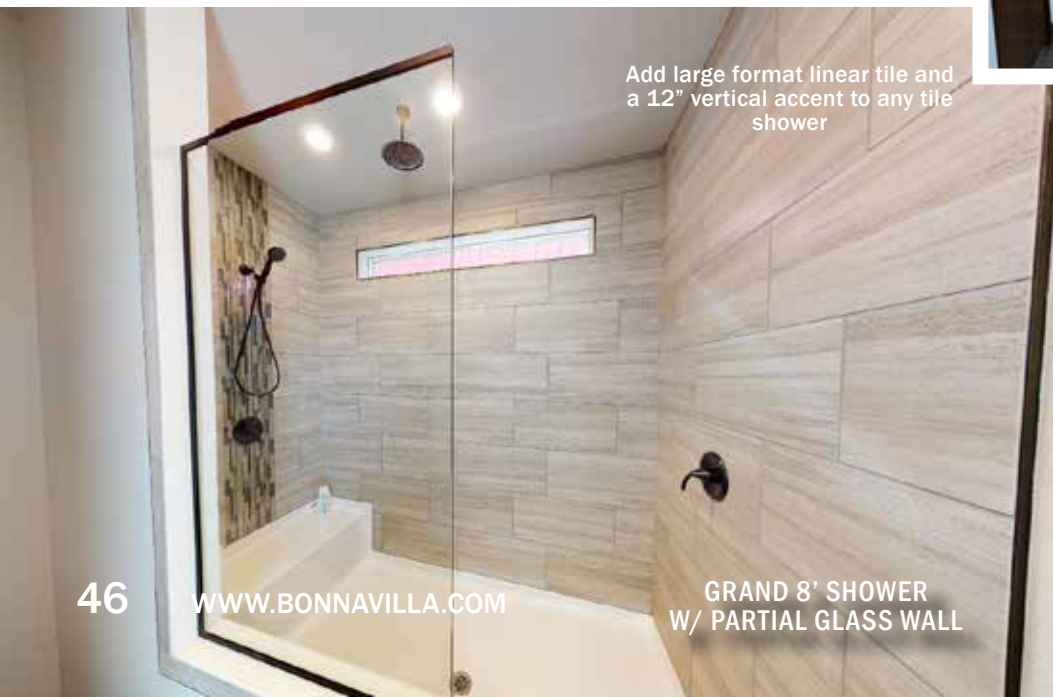
OASIS TUB  
(with 2 tiled walls)

VESSEL SINK

- GRAND 8' SHOWER features
- Full width seat on one end
  - Tile Surround
  - (2) LED can lights
  - (1) Rainfall shower head-ceiling
  - (1) Handheld shower head



72"X42" TILE SHOWER



Add large format linear tile and a 12" vertical accent to any tile shower

GRAND 8' SHOWER  
W/ PARTIAL GLASS WALL



RECESSED  
SHOWER NICHE

72"X42" TILE SHOWER



48" TILE SHOWER  
(NICKEL FINISH)



60" TILE SHOWER WITH  
BARN STYLE SHOWER DOOR



60" TILE SHOWER



60"x42"  
TUB /SHOWER COMBO



WIRE SOAP DISH

Add a vertical or horizontal  
accent band of mosaic tile  
to achieve this look!



72" ULTRA TUB  
(option to add jets and inline heat)

SOAP DISH  
1 IN A 60" SHOWER  
1 IN A PARTIAL GLASS SHOWER  
2 IN A 48" SHOWER



48" SHOWER  
W/ PARTIAL GLASS WALL

# Oasis Bathraam

DETAILS make the DIFFERENCE



## Oasis Bathraam Package

- **OASIS FREE-STANDING TUB**
  - OASIS FREE STANDING TUB
  - 42" TILE ON SURROUND (2) WALLS

- **OASIS MIRROR WALL VANITY**
  - TILE VANITY WALL WITH FRAMED MIRRORS
  - 36" VANITY HEIGHT WITH (1) DRAWER BANK
  - (2) LED CAN LIGHTS ABOVE EACH VANITY
- **48" SHOWER WITH PARTIAL GLASS WALL**
  - 48" SHOWER WITH TILE SURROUND WITH MOSAIC BAND
  - PARTIAL GLASS WALL ON ONE SIDE
- **ADDITIONAL AMENITIES**
  - (2) 2436 OBSCURE WINDOWS OVER THE TUB
  - (2) BARNWOOD FLOATING SHELVES OVER THE TUB
  - (1) CAN LIGHT OVER THE SHOWER
  - (2) CAN LIGHTS OVER THE TUB

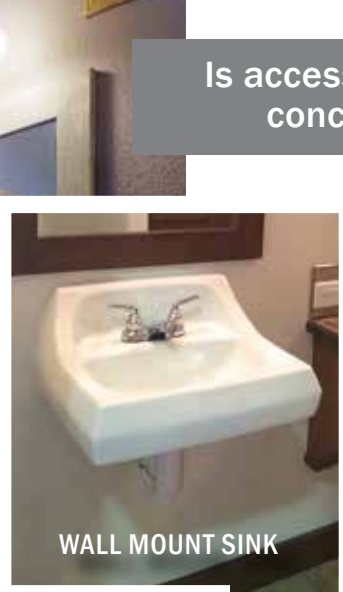
Is accessibility a concern?



60" TILE SHOWER WITH RAINFALL SHOWER HEAD



RECESSED MEDICINE CABINET

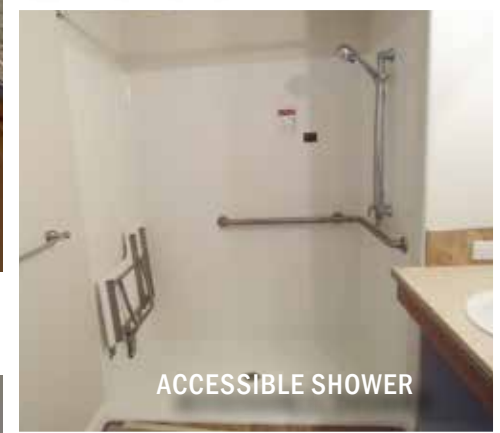


WALL MOUNT SINK



42" GRAB BAR (24" & 36" also available)

Add an additional grab bar to a standard tub or wall area.



ACCESSIBLE SHOWER

Add a transom window, tile to sidewall height, and waterproofing for the transom to achieve this look



Can Light (4 LED)

FIBERGLASS TUB/SHOWER BASE WITH FULL TILE SURROUND



36" MIRROR

# UTILITY DESIGN

The Utility Room is to be both functional and inviting. Often a place to do laundry or transition between the outdoors and your home - why not make this room have all the amenities you need? Add locker cabinets, a utility sink and cabinetry, additional closet space, or even an entry hall tree.



LAUNDRY 4 DOOR OVERHEAD CABINET WITH ROD

RAISED WASHER / DRYER PEDESTAL



Add Base and Overhead with a Linen Cabinet for added storage.



LAUNDRY 4 DOOR OVERHEAD CABINET WITH NO ROD



WOOD SHELF

RECESSED DRYER BOX



WIRE SHELF

Add a window over the sink for added natural light.



UTILITY SINK/CABINETS

LAUNDRY ISLAND CABINET

Add a Laundry Island to store laundry baskets or other linens.



LAUNDRY ISLAND CABINET



PREP FOR STACKABLE WASHER / DRYER



LOCKER CABINETRY



RAISED UTILITY SINK



LAUNDRY 2 DOOR OVERHEAD CABINETS WITH ROD

1/2 CLEAR GLASS EXTERIOR DOOR



**CONTACT US TODAY!**



**bonnavilla.com**  
**[308] 389-8367**



BACKED BY THE STRENGTH & STABILITY OF



*Trusted. Tested. True.*

## FAMILY OF BRANDS

### CHIEF AGRI

» CHIEF ASIA

*agri.chiefind.com*

### BONNAVILLA

» EAGLE CREST HOMES

*bonnavilla.com*

### CHIEF BUILDINGS

» ARROWHEAD STEEL

*chiefbuildings.com*

### CHIEF CARRIERS

» CHIEF LOGISTICS

*chiefcarriers.com*

### CHIEF CONSTRUCTION

» HEARTLAND ELECTRIC

» CHIEF DEVELOPMENT

*chiefconstruction.build*

### CHIEF FABRICATION

» PIVOT WALKER

» POWDER COAT FACILITY

*chieffabrication.com*

### CHIEF ETHANOL

*chiefethanol.com*

**BONNAVILLA** 

A DIVISION OF CHIEF INDUSTRIES, INC.

111 Grant St. | Aurora, NE 68818  
308-389-8367 | [www.bonnavilla.com](http://www.bonnavilla.com)

# BONNAVILLA

A DIVISION OF CHIEF INDUSTRIES, INC.

QUALITY MODULAR HOMES

# DETAILS make the DIFFERENCE

Our mission is to provide unparalleled personal attention to meeting the needs of our customers while treating all stakeholders with dignity and respect, thereby ensuring our strength and stability.



# CHIEF INDUSTRIES

*Trusted. Tested. True.*

P.O. Box 127  
111 Grant Street  
Aurora, NE 68818  
308-389-8367 PH  
308-389-6749 FAX  
[www.bonnavilla.com](http://www.bonnavilla.com)

*featuring*



**WINDSOR**  
WINDOWS & DOORS  
A Woodgrain Millwork Company



NOVEMBER 2023