

●
01

Structural Additions &
Options

●
10

Fireplace Options

●
14

Window Options

●
18

Plumbing Options

●
28

Electric Options

●
30

Exterior Trim Options

●
32

Exterior Door Options

●
36

Siding & Shingle
Options

●
38

Cabinet Styles

●
42

Specialty Cabinet &
Range Hood Options

●
46

Ceramic Tile Options

●
48

Countertop Options

●
52

Desk & Island Options

●
58

Interior Door and Trim
Options

●
60

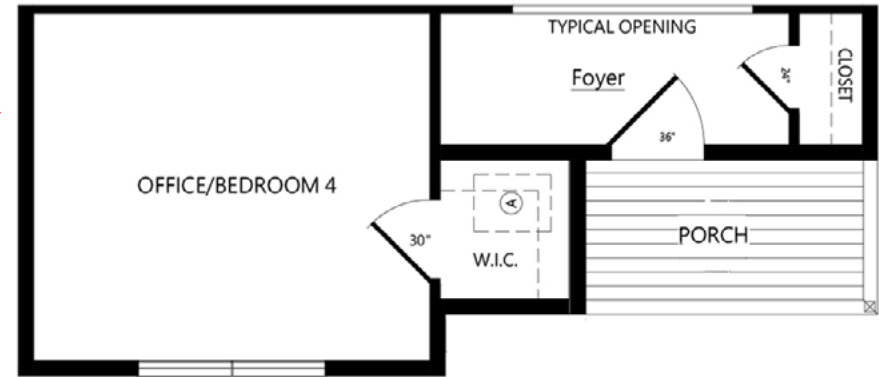
Flooring Options

●
64

Interior Finish Options



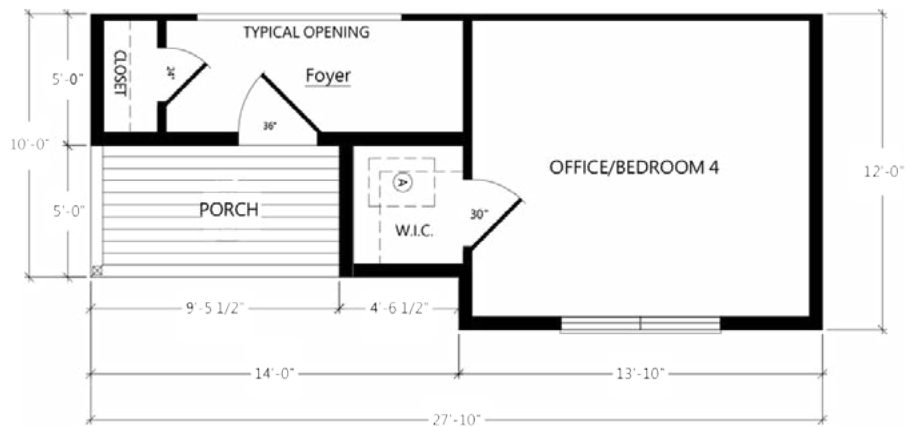
STRUCTURAL ADDITIONS & OPTIONS



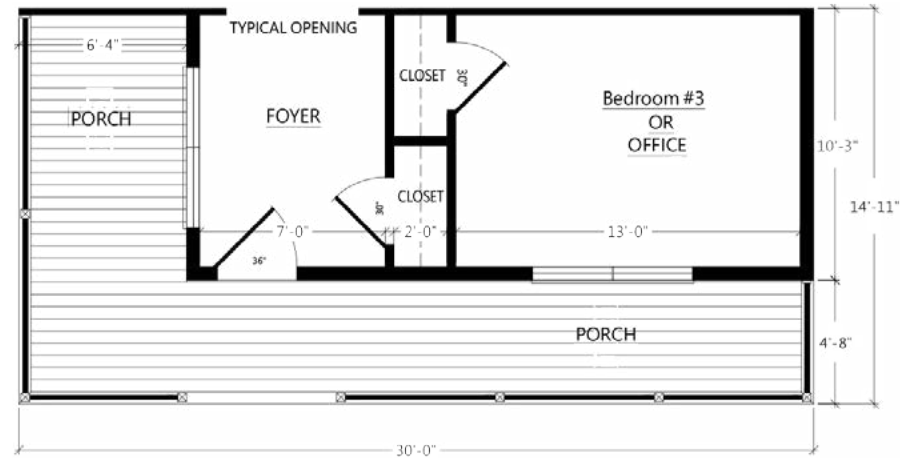
ADD A THIRD BOX CONFIGURATION

There are many customizations that can be added to the design of our homes. With your builder, adding more square footage, garages, and porches on site is always an option. All of these are popular ideas when building a home and we have designed modules, or boxes, to specifically tackle several of these at once. These modules can be added to many of our floor plans and with this one addition, space for an extra bedroom, office, or even workout room can be added. Along with extra interior space, front porch additions can be added for a dramatic change in curb appeal as well as adding an outdoor living space.

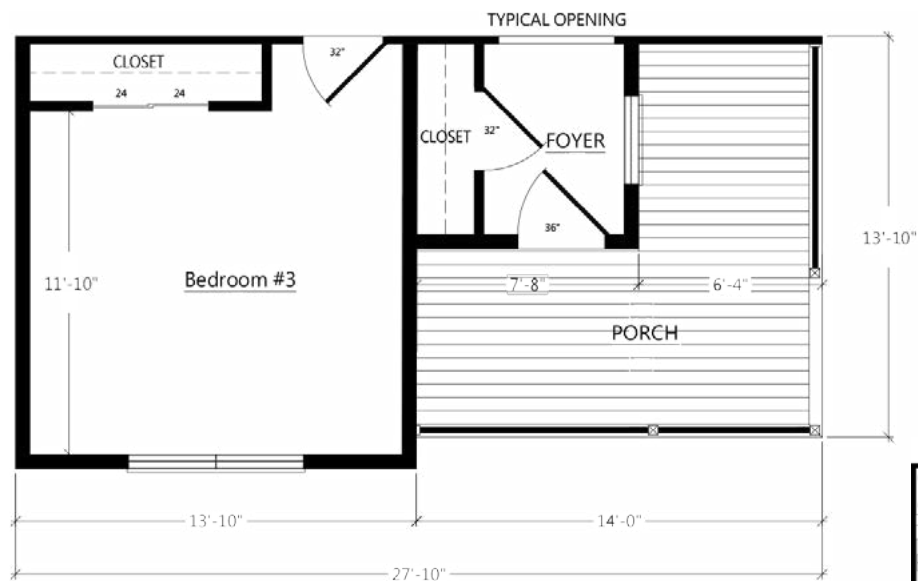




PORCH UNIT A: OP2008R



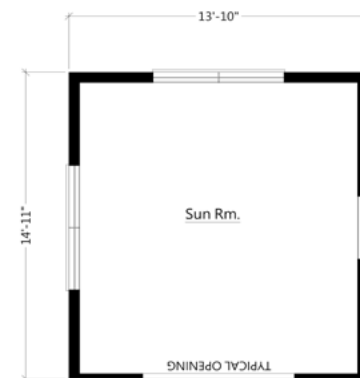
PORCH UNIT B: OP2009R

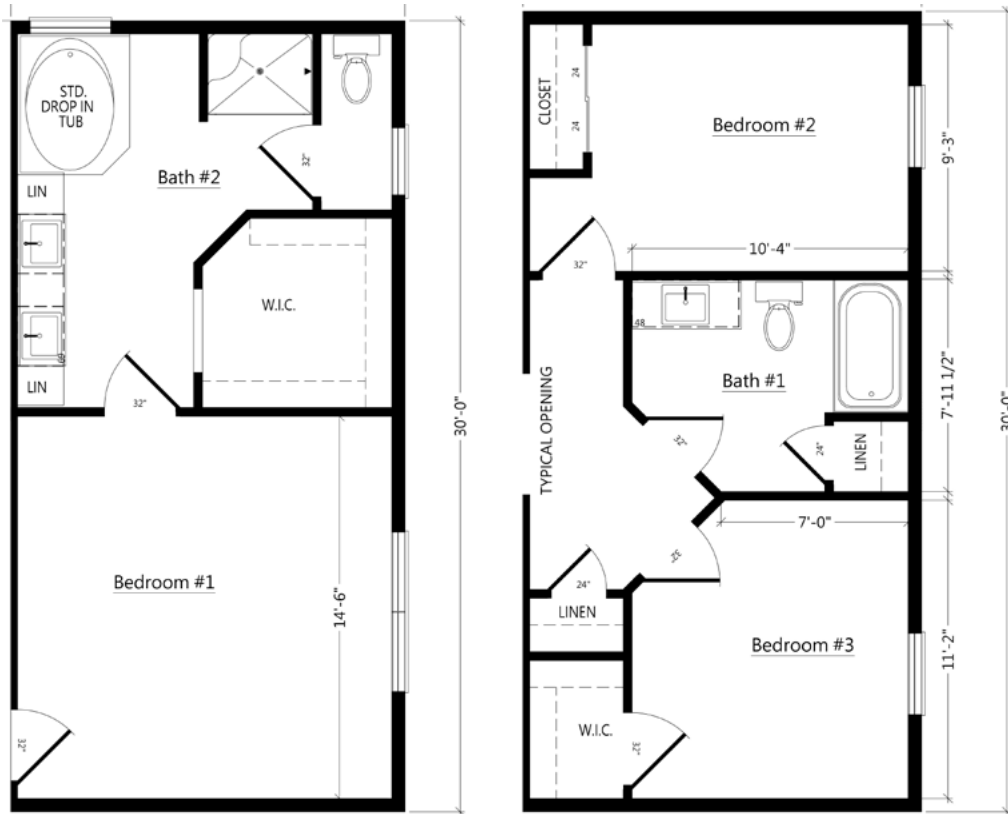


PORCH UNIT C: OP2010R



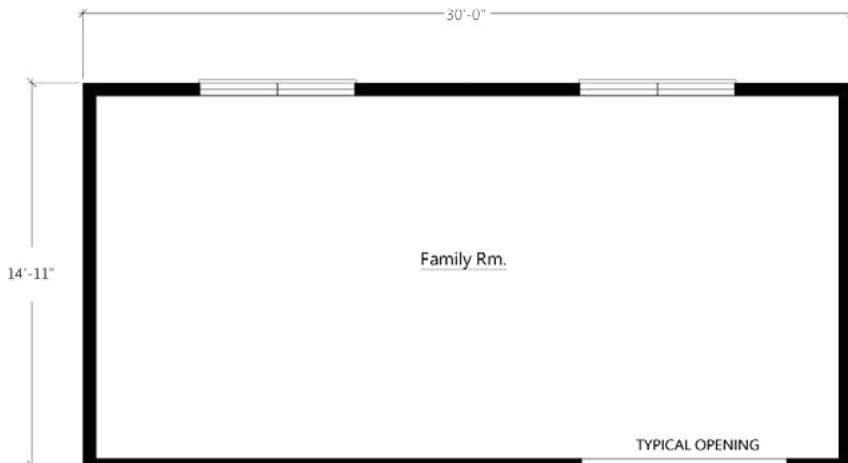
SUNROOM: OP#2011R





BED BATH UNIT A: OP2003R

BED BATH UNIT B: OP2004R



FAMILY ROOM

- 26ft: **OP2005R**
- 28ft: **OP2006R**
- 30ft: **OP2007R**

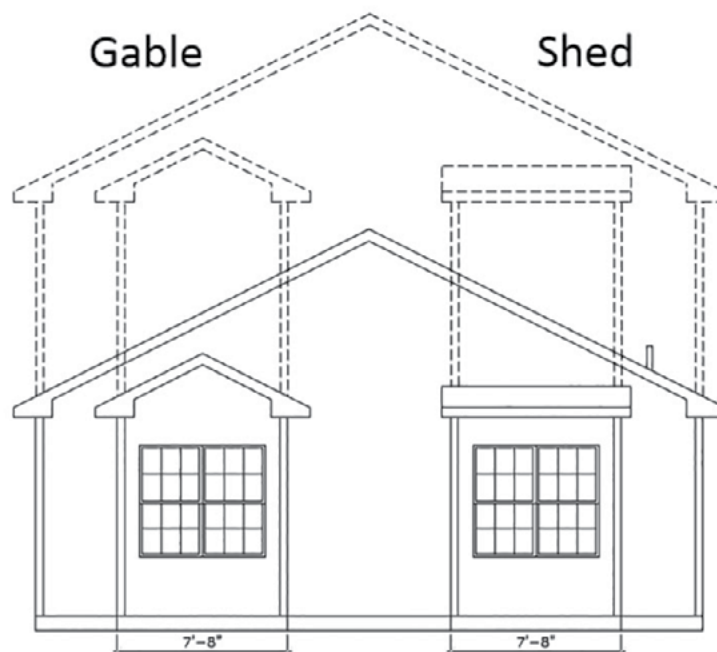


We have designed modules specific to getting more bedrooms and bathrooms in a home. These are especially appealing when added to one of our two story floor plans. Many people have used the bedroom addition modules for adding a main floor master suite or an in-law suite. Finally, we have a living room module that can be added to the side or back of almost any of our designs for additional living/family room. All of these additional boxes will enhance the dimension to a home creating a stunning exterior.



WHAT IS A ROOF RETURN?

Roof returns are an option on some of our gables and bump outs, a familiar term for these are eyebrows. The shingled line of the roof shown on the left is a good example. A roof return can be used to add decoration to a gable or as a break between a change in exterior façade.



GABLE VS SHED

We offer two roof profiles on our dormers and bump outs. A gable style roof, where the roof lines come to a peak at the front, can be used to accent a traditional, transitional, or Victorian style home. A shed roof is a low sloped roof that moves in the same directions as the main roof line of a home. Most people use shed roofs to provide a craftsman, transitional, or even modern look.

DUTCH GABLE BUMP-OUT

Available on 6/12 or 9/12 Ranch or Two Story



No Roof Return Bump-out
Shown with 8' Sidewalls,
(2) 3050 Operable Windows,
and Lineals.
OP2013AR

Roof Return Bump-out
Shown with 8' Sidewalls,
(2) 3050 Operable Windows,
and Lineals.
OP2014AR



GABLE BUMP-OUT

Available on 6/12 or 9/12 Ranch or Two Story



Roof Return Bump-out
Shown with 8' Sidewalls,
(2) 3050 Operable Windows,
and Lineals.
Ranch: OP2016AR
Two Story: OP2028R

No Roof Return Bump-out
Shown with 8' Sidewalls,
(2) 3050 Operable Windows,
and Shutters.
Ranch: OP2015AR
Two Story: OP2024R



END WALL BUMP-OUT

Available on 6/12 or 9/12 Ranch or Two Story



10" Gable Bump Out
Shown with 3050 windows
Ranch: OP2011AR
Two Story: OP2019R

10" Shed Bump-out
Shown with 3050 windows
Ranch: OP2018AR
Two Story: OP2020R



TWO STORY GABLE BUMP-OUT

Available on 6/12 or 9/12 Two Story



Square Window Bump-out with (2) 3050
Windows and Shutters
OP2024R

RECESSED ENTRY



Recessed entry with stone or siding to
bottom of door.
Stone: **OP2045AR**
Siding: **OP2044AR**

NOTE

Bumpout does not come standard with windows.

GABLE DORMERS



6' 1" Gable Dormer with 3050 operable or fixed window
OP2033R
Available 9/12 or 12/12



11' Wide Gable Dormer with (2) 3050 fixed or operable Windows
OP2031R
Available 12/12

SHED DORMERS

Available 9/12 or 12/12



6' 1" Shed Dormer with 2030 operable or fixed Windows
OP2035R

11' Wide Shed Dormer with (4) 2030 fixed or operable Windows
OP2034R



8' COVERED PORCH

Available in 6/12, 9/12 Ranch Only

Full width porch or half width available. Porches can only be built on gable ends.
OP2002R



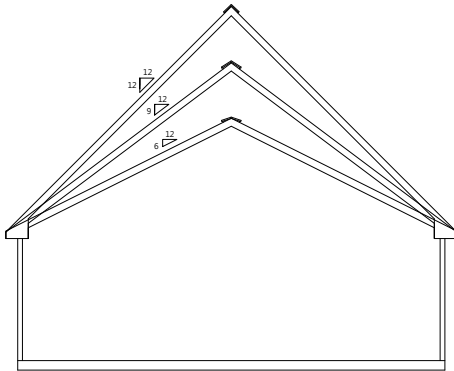
WHY YOU SHOULD ADD DORMERS



Adding one or more dormers to a roof's structure can turn a rather bland roofline into one with architectural interest and curb appeal. Not only do dormers improve the aesthetics of a home, but this upgrade will also make a home more appealing to buyers. When added to a home, dormers provide much-needed natural light and another view of the outdoors. Adding a large dormer will increase the usable space of a room. They are perfect spots for a reading nook, small office space or a kids' play area.



BENEFITS OF A HIGHER ROOF PITCH



STARTING WITH 6/12

All of our 2 box standard ranch homes begin as a 6/12 roof pitch. Upgrade to a 9/12 or a 12/12 roof pitch to take advantage of exterior options such as a higher roof pitch and the ability to add dormers.

ATTIC SPACE & LIVING SPACE

A higher roof pitch encourages the development of larger attic spaces that are terrific for seasonal or long-term storage. The best part? This storage room often has very minimal installation expenses, as the space is already there. Depending on the pitch, there may even be enough space to convert this area into a functional living space. Many higher pitched roofs have windows installed for added natural light in the attic area.

EXTERIOR APPEAL

Many people adore homes with a higher roof pitch because they offer more visibility to a roof. A roof with a low pitch is usually not visible from ground level. A higher pitch can play a significant role in adding curb appeal to your home. These roofs make a home look more ornate and prominent from the outside. They also allow for the addition of decorative caps, inventive designs, and gables to your building. Higher roof pitches can turn a simple architectural style into a more visually complex one with just a few finishing touches.



Non Habitable 9/12 with 3/4 deck and 2x6 attic endwalls with R25 insulation under floor. (habitable option available)

Habitable 12/12 with 3/4 deck and 2x6 endwalls. R30 insulation under floor



Stairway Rail System
Handrail is not provided by RHI.
OP30033R



UPSTAIRS 12/12 FINISHED ON SITE

9/12 CATHEDRAL



9/12 Cathedral shown with (2) 3/0 x 3/0 fixed windows & (1) 3/0 x 6/0 fixed window.

Also available with (2) optional patio doors.

SILVERLINE

26 ft Wide: [OP3000R](#)
28 ft Wide: [OP3001R](#)
30 ft Wide: [OP3002R](#)

ANDERSEN

26 ft Wide: [OP3075R](#)
28 ft Wide: [OP3076R](#)
30 ft Wide: [OP3077R](#)

12/12 LOFTED CAPE



12/12 Lofted Cape shown with (2) 3/0 x 3/0 fixed windows & (1) 6/0 x 6/0 fixed window.

Also available with (2) optional patio doors.

SILVERLINE

26 ft Wide: [OP3025R](#)
28 ft Wide: [OP3028R](#)
30 ft Wide: [OP3031R](#)

ANDERSEN

26 ft Wide: [OP3078R](#)
28 ft Wide: [OP3079R](#)
30 ft Wide: [OP3080R](#)

LOFTED 9/12, FINISHED ON SITE

All cathedral and loft options have a similar interior to below



12/12 LOFTED CAPE



12/12 Lofted Cape shown with (2) fixed trapezoid windows & (1) fixed picture window. Also available with (2) optional patio doors.

SILVERLINE

26 ft Wide: [OP3027R](#)
28 ft Wide: [OP3030R](#)

ANDERSEN

26 ft Wide: [OP3026R](#)
28 ft Wide: [OP3029R](#)

12/12 Lofted Cape shown with (2) fixed trapezoid windows & (1) fixed twin picture window. Also available with (2) optional patio doors.

SILVERLINE

30 ft Wide: [OP3032R](#)

ANDERSEN

30 ft Wide: [OP3033R](#)



FIREPLACE OPTIONS

CUSTOMIZE YOUR FIREPLACE

Digital depictions of Fireplaces does not reflect actual final color

STONE COLOR & STYLE



BUCKS CREEK



CHARLESTON



GALVESTON GRAY



HAMPTON GRAY



GRAPHITE



PRICE

FARMHOUSE MANTLE

Wrap around mantle, stain matches trim package

*Shiplap not available through RHI

OP4024R



60 INCH. BEAM MANTLES

Mantles constructed out of Maple

OP4023R



Farmstead

Weathered



FIREPLACE A



Fireplace A Stone front corner fireplace. Shown with Charleston Stone & Traditional Mantle

Ranch Gas: [OP4001AR](#) Wood: [OP4000AR](#)

Cape Gas: [OP4002R](#) Wood: [OP4003R](#)

FIREPLACE C



Fireplace C Stone front flat fireplace. Shown with Hampton Gray Stone & Traditional Mantle

Ranch Gas: [OP4006AR](#) Wood: [OP4007AR](#) Cape Gas: [OP4004R](#) Wood: [OP4005R](#)

FIREPLACE F



Fireplace F Rave fireplace. Includes: Modern Fireplace with Black Trim

Ranch Gas: [OP4013AR](#)

Cape Gas: [OP4012R](#)

Note: *Media prep outlet is not included

Digital depictions of Fireplaces does not reflect actual final color

FIREPLACE E



Fireplace E Stone front half wall fireplace. Shown with Graphite Stone & Traditional Mantle.

Ranch Gas: **OP4010AR** Wood: **OP4011AR** Cape Gas: **OP4008R** Wood: **OP4009R**

FIREPLACE H



Fireplace H Stone front fireplace with Farmhouse Mantle. Shown with Bucks Creek stone.

Ranch Gas: **OP4019AR** Wood: **OP4020AR**
Cape Gas: **OP4018R** Wood: **OP4021R**

FIREPLACE G



Fireplace G Farmhouse fireplace. Shown with Bucks Creek Stone front Fireplace. Shelving with raised hearth and mantel, windows, (4) can lights and (2) eyeball lights. Total Length: 17' 4"

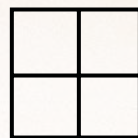
Ranch Gas: **OP4017R**

Wood: **OP4015R**

Cape Gas: **OP4016R**

Wood: **OP4014R**

Note: *Media prep outlet is not included

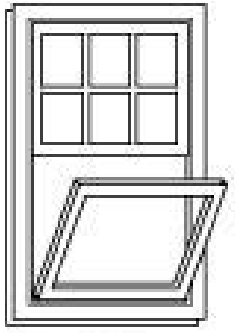


WINDOW OPTIONS

KNOW YOUR WINDOWS

SINGLE HUNG

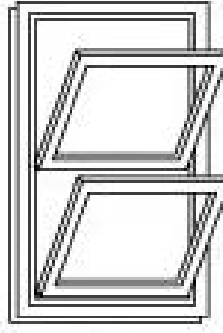
Single-Hung windows allow ventilation through a single operable lower sash.



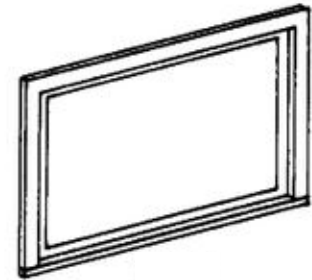
*View from inside

DOUBLE HUNG

Double-Hung windows have two operating sash that move up and down allowing for ventilation on the top, bottom or both.



*View from inside



TRANSOM WINDOW

A window above a door that is usually installed to a horizontal crosspiece over the door.



*View from outside

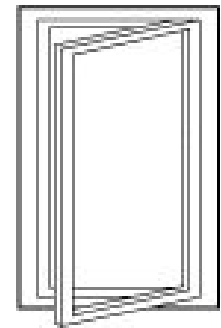
AWNING WINDOW

Awning windows are hinged on the top and open outward from the bottom, allowing for ventilation and protection from the rain. Often placed higher on walls for privacy or in combination with large stationary windows for a better view.

CASEMENT WINDOW

Casement windows are hinged on the side and crank open outward to the left or right allowing for full top to bottom ventilation.

Standard above kitchen sinks, casement windows give you the flexibility to group them in stunning combinations.



*View from outside



ADVANTAGES OF SILVERLINE

The Silverline Series offers a great vinyl window option that performs just as well as it looks.

- Low Maintenance Vinyl Interior and Exterior
- Standard with screen & colonial grids
- Casement Window in Kitchen, single hung
- 6' 0" Also available with 9' Sidewall Option
- Available in Double Hung
- Transoms also available
- Energy Star Rated
- Limited Lifetime Warranty

SOME POPULAR SILVERLINE OPTIONS

Vinyl WDO 3050: [OP9038AR](#)

Vinyl WDO 3060: [OP9041R](#)

Vinyl WDO 2030 tempered glass additional: [OP9032AR](#)

Vinyl WDO 2630 tempered glass additional: [OP9037AR](#)

Vinyl WDO 4050 w/two flanking windows: [OP9045R](#)

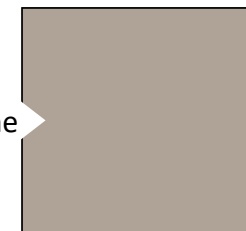
Vinyl WDO Transom 12 inch: [OP9054AR](#)

Vinyl WDO Awning 3015: [OP9046R](#)

Vinyl WDO 2430 Casement additional: [OP9036AR](#)



White



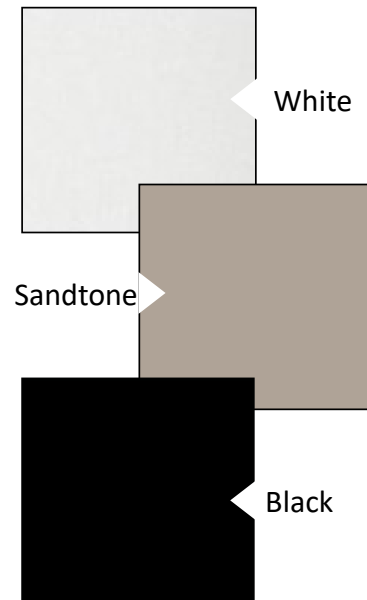
Sandtone



ADVANTAGES OF ANDERSEN

The 400 Series brings you the best overall blend of performance and style to satisfy just about any window or patio door need.

- Interior Wood Painted
- Wood Frame with Exterior Vinyl Clad
- Wood Sashes with Flexacron Finished Exterior
- Standard with screen and colonial grids
- Standard Double Hung with Casement in Kitchen
- Energy Star Rated
- Limited Warranty



SOME POPULAR ANDERSEN OPTIONS

- Andersen 400 WDO TW210410: [OP9017R](#)
- Andersen 400 WDO TW210510: [OP9020R](#)
- Andersen 400 WDO TW20210: [OP9014R](#)
- Andersen 400 WDO TW24120: [OP9021R](#)
- Andersen 400 WDO Picture 310410 w/ 2 flanking: [OP9011R](#)
- Andersen 400 WDO Transom: [OP9013R](#)
- Andersen 400 WDO AR31 Awning 3'x17": [OP9009R](#)
- Andersen 400 WDO CW13: [OP9010R](#)



PLUMBING OPTIONS

BEST SELLING SHOWERS!

*All Tile showers are standard with Schluter edging



SHOWER OH!



5'x5' shower pan with rainfall showerhead. Standard with two shower heads.

No shampoo niche

Ceramic IPO 48" shower in all three tile colors and with a transom window **OP6046R**

Panels IPO 48" shower, no window **OP6046R**

SERENITY SHOWERS



Shower N3

Serenity ceramic walk in shower, 1/2 wall, and glass, standard with block window, can light, rainfall showerhead, and Delta components

OP6043R

Shower N4

Serenity ceramic walk in shower with full bench, 1/2 wall, and glass, standard with block window, can light, rainfall showerhead, and Delta components

OP6044R

STANDARD SINKS



Standard stainless steel kitchen sink 8" depth



Standard China Lav Bowl
*Sinks come in square variation



Black Kitchen Sink
-Crafted from Nickel Quartz
-Stain, impact, heat, and scratch resistant
-Sound-deadening material
-Hygiene protection
-9" depth
OP6051AR

Kohler Vault Stainless Steel Single Bowl topmount, 10" depth
OP6055AR



OPTIONAL SINKS



Pedestal Sink
OP6057AR



Washtub installed in cabinet
OP6059AR



Double Lavs
*Sinks come in square variation
OP6053AR

Vault Bar Sink
OP#6050AR



CHOOSE YOUR FINISHES



see what Delta can do™



BRUSHED NICKEL FAUCET PACKAGE - OP6017AR



Kitchen Faucet



Bathroom Faucet



Stand Alone Tub Faucet



Shower Trim



Tub/Shower Trim

MATTE BLACK FAUCET PACKAGE - OP6017AR



Kitchen Faucet



Bathroom Faucet



Stand Alone Tub Faucet



Shower Trim



Tub/Shower Trim

CHOOSE YOUR FINISHES

SERENITY/TRANQUILITY/SHOWER OH! FAUCET OPTIONS

Additional rainfall shower head and two way diverter are automatically included in the serenity, tranquility, and shower OH upgrades



Valve Trim - OP6017AR
-Brushed Nickel



Valve Trim - OP6017AR
-Matte Black



Rain Showerhead
-Brushed Nickel



Rain Showerhead
-Matte Black

ALTERNATIVE UPGRADES



Bar Sink Faucet - OP6050AR
-Brushed Nickel



Bar Sink Faucet - OP6050AR
-Matte Black



Handheld Showerhead - OP6040AR
-Brushed Nickel



Handheld Showerhead - OP6040AR
-Matte Black

Replace the shower head in any shower with a handheld one

SHOWER OPTIONS

*All Tile showers are standard with Shluter edging



Shower A
60" Tub/ Shower



Shower C
48" shower with sliding enclosure in place of tub/shower.
OP6030AR
Available with ceramic on walls. No seat
OP6029R



Shower D
60" shower with enclosure in place of tub/shower.
OP6032AR
Available with ceramic on walls no seat.
OP6031R



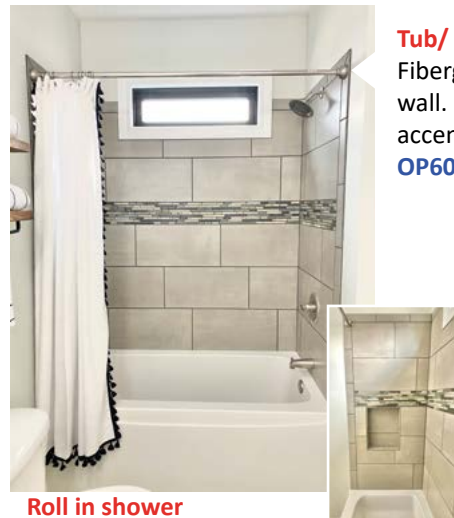
Shower E
60x43 bench shower in place of standard tub/shower with enclosure.
OP6036AR



60in Chrome Barn Shower Door

- Contemporary barn door w/ a minimalist design
- Slim stainless header with 18 in. handle
- Brushed Nickel Finish
- 78 3/4" high clear glass panel
- (Available with Shower OH! and 60in. Ceramic Only)

OP6033R



Roll in shower
50x50 in place of standard w/(1) grab bar
OP6049AR
Fold down seat in roll in shower **OP6038AR**
Grab bar for tub/shower (1) **OP6039AR**
Hand held shower head(shower head only)
OP6040AR

Tub/ Shower G
Fiberglass tub with ceramic tile on wall. Ivory, Calacatta, or Gray with accent. Includes shampoo niche.
OP6065R

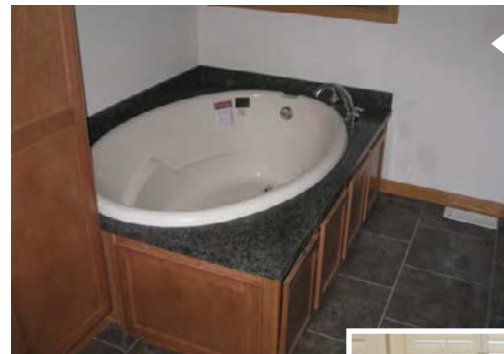


TUB OPTIONS

*All Tile showers are standard with Shluter edging



Tub M
Ceramic backsplash for corner tub w/ (1) row of accent tile
OP6064R



Tub G
Drop in tub with laminate top

Tub L
Ceramic top on drop in tub, with 45" of backsplash, one row of accent tile
OP6063R



Tub H
72" tub in place of standard
OP6067AR



Tub I
Corner Fit Tub



Tub B
Garden/Tub shower in place of standard
OP6062AR



Free Standing Tub
Freestanding fiberglass tub in place of standard
OP6077AR

SHOWER TILE OPTIONS

- OP6069R** - Ceramic tile 12x24 with Silverado Grout
- OP6047R** - Shower OH! with Ceramic Tile IPO 48in. Shower and drop in Tub
- OP6048R** - Shower OH! with Ceramic Tile IPO 48in. Shower/Tub

SERENITY SHOWERS

N1 & N3



Shower N1

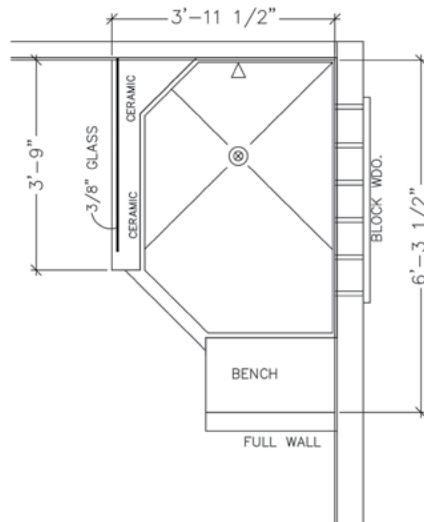
Serenity ceramic walk in shower standard with block window (not shown), can light, rainfall showerhead, and Delta components

OP6041R

Shower N3

Serenity ceramic walk in shower, 1/2 wall, and glass, standard with block window, can light, rainfall showerhead, and Delta components

OP6043R

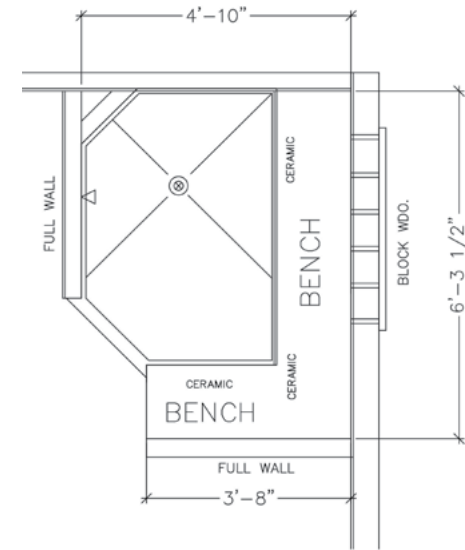


N2 & N4

Shower N2

Serenity ceramic walk in shower with full bench, standard with block window, can light, rainfall showerhead, and Delta components

OP6042R



Shower N4

Serenity ceramic walk in shower with full bench, 1/2 wall, and glass, standard with block window, can light, rainfall showerhead, and Delta components

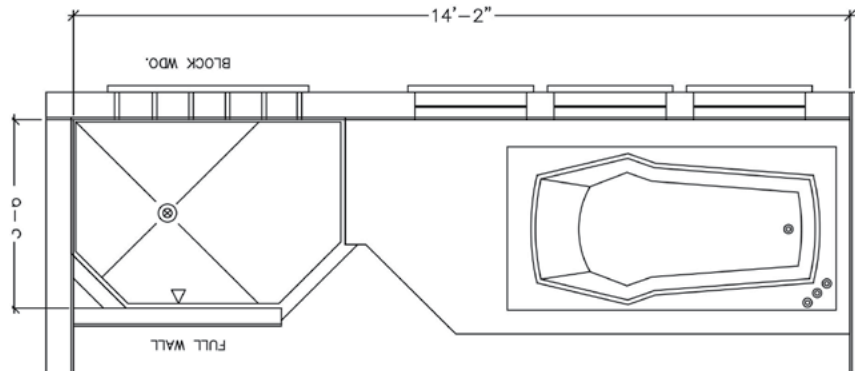
OP6044R

*All Tile showers are standard with Schluter edging

*A Transom Window will replace the block window unless specified

TRANQUILITY BATHS

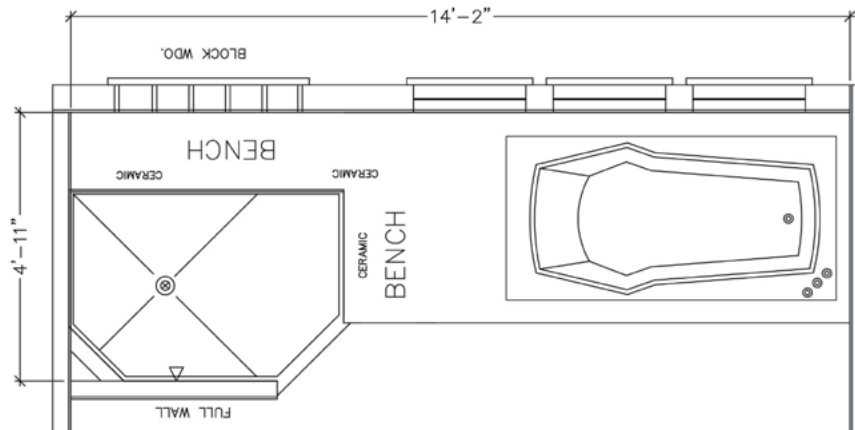
T1 & T2



Shower T1

Ceramic walk in shower with 72" tub, may change plan, total length 14' 2". Includes windows & shutters shown, can light, rainfall shower head and Delta components

OP6021R

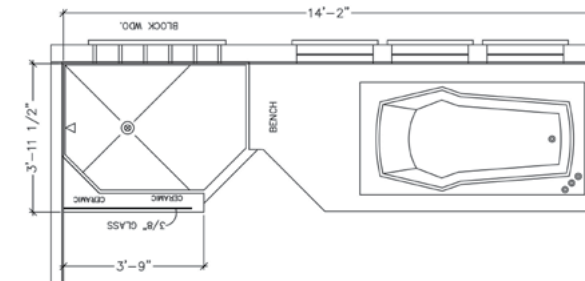


Shower T2

Ceramic walk in shower with 72" tub, may change plan, total length 14' 2". Includes full bench, windows & shutters shown, can light, rainfall shower head, and Delta components

OP6022R

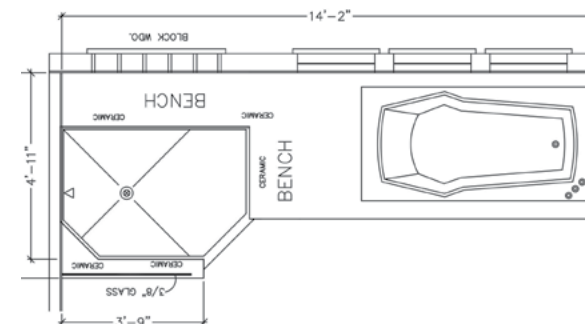
T3 & T4



Shower T3

Ceramic walk in shower with 72" tub, may change plan, total length 14' 2". Includes 1/2 wall, and glass, windows & shutters shown, can light, rainfall shower head and Delta components

OP6023R



Shower T4

Ceramic walk in shower with 72" tub, may change plan, total length 14' 2". Includes full bench, 1/2 wall with glass, windows and shutters shown, can light, and rainfall shower head Delta components.

OP6024R





ELECTRIC OPTIONS

STANDARD LIGHT FIXTURE OPTIONS - OP19013AR

BRUSHED NICKEL



Dining Room Chandelier



Foyer Chandelier*



Pendant Light



Flush Mount Light



Exterior Coach Light

MATTE BLACK



Dining Room Chandelier



Foyer Chandelier*



Pendant Light



Flush Mount Light

ELECTRICAL OPTIONS



USB/Power in place of standard

OP7013AR

USB/Power outlet additional

OP7012AR

White Can Light - Standard in Kitchen, Walk-in Closet, Utility, Hallway, and some Foyers

*Foyer Chandelier is only available in Two-Stories



EXTERIOR TRIM OPTIONS

SHUTTERS

Raised Panel (Standard)/Board & Batten (Upgrade)



WINESTONE

DARK NAVY

WHITE

GRAY

BLACK



**PEBBLESTONE
CLAY**

PEPPERCORN

SPANISH MOSS

**BLACKWATCH
GREEN**

RED



5 1/2" trim (shown) replace shutters
white or clay
Ranch/Cape **OP11000AR**
Two Story **OP11002R**



EXT Trim-Sandtone/Clay trim package Ranch **OP11008AR** Two story **OP11005R** Cape Cod **OP11007R**
EXT Trim-Ranch Trim Package White: Window, Door, Drip Edge, Fascia, and Soffit **OP11006AR**
EXT Trim- Black trim package. Soffit, Fascia, Drip Edge **OP11026AR**
Board and Batten Shutters replace standard Ranch/Cape **OP11003AR** Two Story **OP11004R**



EXTERIOR DOOR OPTIONS

DOOR HANDLE OPTIONS

STANDARD EXTERIOR DOOR HANDLE - OP19013AR



FEATURES

- Exceeds criteria for BHMA Grade 3 certification
- Quality craftsmanship ensures durability and premium feel
- Lever design pairs well with the modern, clean lines of contemporary and urban design
- Covered under a limited lifetime mechanical and 5 year finish warranty



Brushed Nickel - Standard



Matte Black - Standard

PATIO DOORS



Therma-Tru 2 panel hinged grids and screen
OP8063AR



Vinyl 2 panel sliding with screen
OP8064AR



RS130 6068 HPD Therma-Tru 2 panel hinged with blinds and screen
OP8065AR



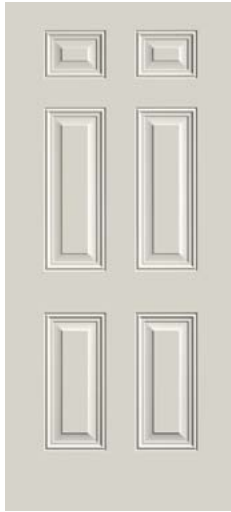
Andersen Perma Shield 2 panel gliding with screen. No grids. Int/Ext match
OP8062AR



Andersen 2 panel sliding with screen. No grids. Ext. painted white.
OP8061AR

EXTERIOR DOOR OPTIONS

ALL DOORS AVAILABLE IN SMOOTH PAINT OR WOOD GRAIN STAIN



Door A

Smooth Painted
Upgrade Steel 6 Panel
Fire Rated 20 min.
Front or 90 min. Rear
OP8000AR



Door C: Full Axis Glass
Painted Wood Grain

OP8004AR OP8003AR

Sidelight:

OP8022AR OP8021AR

Transom:

OP8039AR OP8040AR



Door D: 3/4 glass, 12 light
Painted Wood Grain

OP8006AR OP8005AR

Sidelight:

OP8024AR OP8023AR

Transom:

OP8041AR OP8042AR



Door E: 6 Light, Raised Panel
Painted Wood Grain

OP8008AR OP8007AR

Sidelight:

OP8026AR OP8025AR

Transom:

OP8043AR OP8044AR

PAINT COLORS

112 Alpine

110 Obsidian
OP8080AR

130 Indigo
OP8081AR

122 Sand

152 Cabernet
OP8087AR

134 Blue
OP8083AR

106 Granite
OP8078AR

132 Wedgewood
OP8082AR

144 Forrest Green
OP8086AR

108 Gray
OP8079AR



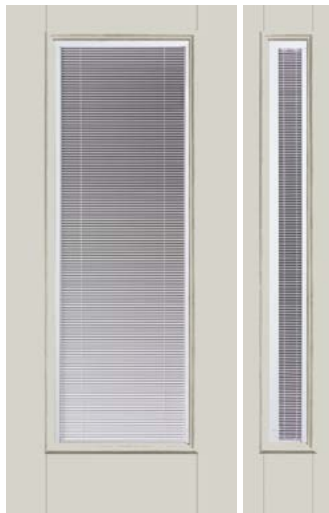
Door F: 9 Light, Exterior Grids
Painted Wood Grain
OP8010AR **OP8009AR**
 Sidelight:
OP8028AR OP8027AR
 Transom:
OP8045AR OP8046AR



Door G: 4 Light
Painted Wood Grain
OP8012AR **OP8011AR**
 Sidelight:
OP8030AR OP8029AR
 Transom:
OP8047AR OP8048AR



Door H: Half Glass
Painted Wood Grain
OP8014AR **OP8013AR**
 Sidelight:
OP8032AR OP8031AR
 Transom:
OP8049AR OP8050AR



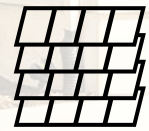
Door I: Full Glass with Blinds
Painted Wood Grain
OP8016AR **OP8015AR**
 Sidelight:
OP8034AR OP8033AR
 Transom:
OP8051AR OP8052AR



Door J: Sunburst, External Grids
Painted Wood Grain
OP8017AR **OP8091AR**
 Sidelight:
OP8036AR OP8035AR
 Transom:
OP8054AR OP8053AR

STAIN COLORS





SIDING & SHINGLES

TRUDEFINITION DURATION SHINGLES



Brownwood
OP12031AR



Teak
OP12043AR



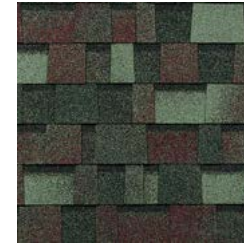
Driftwood
OP12036AR



Onyx Black
OP12039AR



Estate Gray
OP12037AR



Colonial Slate
OP12045AR



Chateau Green
OP12032AR



Terra Cotta
OP12044AR



Sierra Gray
OP12042AR



Desert Rose
OP12057AR



Midnight Plum
OP12058AR



Peppercorn
OP12059AR



Sand Castle
OP12060AR



Slatestone Gray
OP12061AR



Williamsburg Gray
OP12062AR



GROUP A STANDARD SIDING

0.42mm



Gray
OP12012AR



White
OP12016AR



Mist
OP12013AR



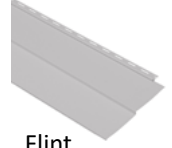
Olive
OP12014AR



Clay
OP12010AR



Tan
OP12015AR



Flint
OP12011AR

GROUP B SIDING

0.42mm



Briarwood
OP12017AR



Sagebrook
OP12019AR



Pewter
OP12018AR



Wedgewood
OP12020AR

GROUP C SIDING

0.44mm



Hampton Red
OP12023AR



Bayou Blue
OP12021AR



Shadow
OP12024AR



Brunswick
OP12022AR

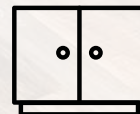
STYLES



Siding groups A-D come in traditional lap.



Siding- Vinyl shingle in Gray, White, or Tan in place of: Standard Siding - OP12027AR Upgrade Siding - OP12028AR



CABINET STYLES

STANDARD CABINET GROUP

Square recessed panel overhead and base cabinets-Partial Overlay

Ranch/Cape **OP13002AR**
Two-Story **OP13000R**



**SPRING VALLEY
MAPLE BOARDWALK**



**SPRING VALLEY
MAPLE PECAN**



**SPRING VALLEY
MAPLE DUSK**

CABINET CONSTRUCTION



We are America's Cabinetmaker.

Construction: 3/4" Solid wood face frames, reinforced and aligned with dowels and adhesive.

Drawers: Front is 3/4" thick. Also have WhisperGlide 75# capacity glides. Deluxe drawer option with 5/8" dovetailed construction and full extension undermount glides with soft-action technology available.

Roll Out Trays: Base cabinet roll out trays optional

Overhead Cabinet Shelves: 3/4" thick fully adjustable overhead shelves

Hinges: 6-way adjustable self closing concealed hinges with limited life time warranty

Warranty: 10-25 year limited warranty depending on cabinets

CABINET GROUP A

Square recessed panel overhead and base cabinets-Partial Overlay

Ranch/Cape **OP13005AR**
Two-Story **OP13006R**



**SPRING VALLEY
HICKORY NATURAL**



**MARLIN MAPLE
BOARDWALK**



**MARLIN MAPLE
PECAN**



**MARLIN MAPLE
DUSK**



Note: Please see sample for true color

CABINET GROUP B

Ranch/Cape [OP13009AR](#)
Two-Story [OP13010R](#)



SPRING VALLEY
MAPLE COTTON



SPRING VALLEY
MAPLE GRAPHITE



SPRING VALLEY
MAPLE NIGHTFALL



MARLIN MAPLE
COTTON



MARLIN MAPLE
GRAPHITE



MARLIN MAPLE
NIGHTFALL

DELUXE DRAWER PACKAGE STANDARD



We are America's Cabinetmaker.

Available for classic line cabinets only in the Kitchen and Utility.

- Thicker core drawers- 5/8" thick drawer core provides a remarkably solid frame
- Dovetail drawer construction-durable and includes the SoftAction+ Tecnology on drawers only for a completely silent and effortless closing movement.
- Full extention drawers-allows the drawer to be completely opened.
- Plywood drawer bottom provides durable support to help resist sagging.



Note: Please see sample for true color

CABINET GROUP C

Ranch/Cape **OP13019R**
Two-Story **OP13014R**

Square recessed panel overhead
and base cabinets- Full Overlay



**RALSTON MAPLE
BOARDWALK**



**RALSTON MAPLE
PECAN**



**RALSTON MAPLE
DUSK**



CABINET GROUP D

Ranch/Cape **OP13036R**
Two-Story **OP13018R**

Square recessed panel overhead
and base cabinets- Full Overlay



**RALSTON
MAPLE COTTON**



**RALSTON
MAPLE GRAPHITE**



**RALSTON
MAPLE NIGHTFALL**

Note: Please see sample for true color



**SPECIALTY CAB/
RANGE HOOD**

STAINLESS STEEL WALL MOUNT

Stainless steel wall mount with ceramic back splash vented outside. Optional with extended glass and 36" opening with 30" range hood [OP14015R](#)



MAKE UP VANITY

42in. Wide Makeup Vanity w/ Countertop , Includes 12in. 3DBOD *Vertical Cabinet not included [OP14045AR](#)



SPECIALTY CABINETS ADDITIONS

[OP14039AR](#) - Vanity storage over commode

[OP7011AR](#) - Under cabinet lighting

[OP14003AR](#) - 18" Additional bank of drawers

[OP13027AR](#) - Base cabinet roll out tray



Standard bathroom with trimmed mirror, pendant lights, and bank of drawers

OVERHEAD CABINET OPTIONS



Wall Wine Storage Cabinet
OP14043AR



24" overhead open bookshelf with organizer in place of overhead 2430
OP14018AR



Glass door on wall straight cabinet 15" or 18" square to match cabinets
OP14033AR

BASE CABINET OPTIONS



Double base waste basket top mount
OP14028AR

36" base pots and pans 2-Drawer in place of standard
OP14020AR

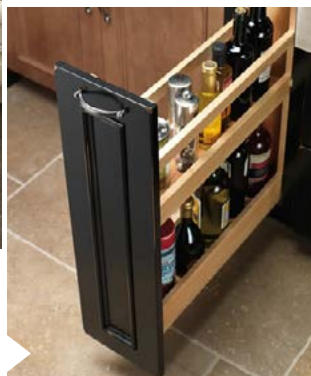


36" base pots and pans 3-Drawer in place of standard
OP14019AR



Tilt out sink tray
OP14036AR

9" base pull out pantry in place of standard cabinet
OP14023AR





36" Pantry with swing out racks in place of 18"
OP14000AR



Double pantry surround refrigerator
OP14029AR



Enclosed refrigerator
36 x 72/stacked washer/
dryer. 30/78 opening
with 24" deep overhead
cabinet
OP14030AR



Universal wall oven unit in place of base
and overhead
OP14038AR
Universal wall oven unit additional cabinet
OP14037AR

33"x90" w/30" Overhead Cabinets
33"x96" w/42" Overhead Cabinets
Appliance Opening Width 27"-31"
Opening Height 23 3/4"-47 1/4"
with two drawers below.

36in wide Bench and
overhead in UTL with
countertop
OP14044AR





CERAMIC TILE

TUB & SHOWER TILE COLORS

See Plumbing Options for showers available in ceramic.



IVORY 12X24



CALACATTA 12X24



GRAY 12X24



MIDNIGHT 12X24



CLAY 12X24

ACCENT TILE

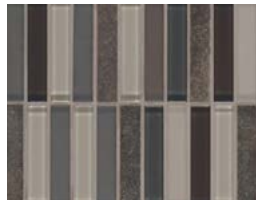
One row of accent tile is standard in all ceramic tub and showers.



FLORA & FAUNA 1.5X3M



SNOW & ICE 1.5X3M



DUSK & DAWN 1.5X3M

KITCHEN

Installed in a brick pattern.

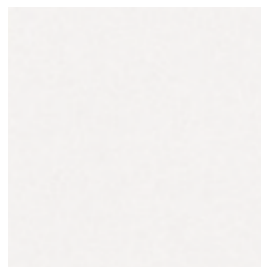
OP14017R HOOD - Stainless steel wall mount w/4x16 Subway Tile backsplash.

Choose Color/Grout/Schluter. Vented EXT.

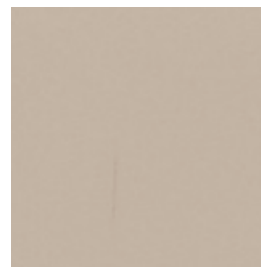
OP14012R CERAMIC - 4x16 Subway Tile backsplash. Choose Color/Grout/Schluter.



NAVY MATTE 4X16

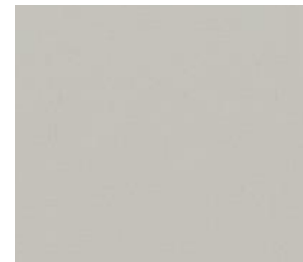


WHITE GLOSSY 4X16

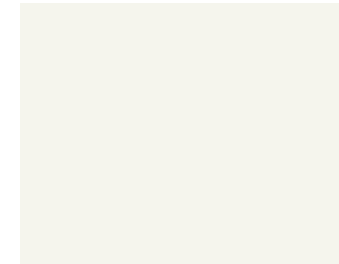


PUTTY GLOSSY 4X16

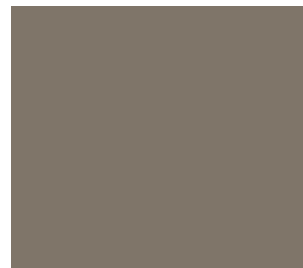
GROUT COLORS



SILVERADO



BRIGHT WHITE



LIGHT BRONZE



RAVEN



COUNTERTOPS

TOP QUARTZ COLORS



CALACATTA LAZA



ICED GRAY



CARARRA MORRO



SOAPSTONE METROPOLIS

ADVANTAGES TO UPGRADING TO QUARTZ


We offer two countertop materials. Laminate countertops are a wood-based counter with a laminated print for a surface. A laminate countertop offers great affordability and has many styles to choose from. We choose to build our homes with a post form, rolled edge laminate top so that there are no seams from the front of your countertop all the way to the backsplash, which prevents damage from water penetrating seams or from physical damage to the top. If you choose to upgrade to a solid surface countertop, we move straight to the hardest top in the industry. Quartz is a manufactured product that has grown in popularity because of its durability, lack of need for major time in upkeep, and beautiful, eye-catching designs.



STANDARD COUNTERTOP COLORS

									
Pebble Piazza (5009-60) OP15008AR	Natural Canvas (7022-58) OP15006AR	Milano Quartz (4726-60) OP15005AR	Oiled Soapstone (4882-38) OP15007AR	White Juparana (4931-38) OP15011AR	White Cascade (5003-38) OP15010AR	Calacatta Oro (4981-38) OP15003AR	White Carrara (4924-38) OP15009AR	Butterum Granite (7732-58) OP15002AR	Jamocha Granite (7734-58) OP15004AR

UPGRADE COUNTERTOP COLORS

							
White Bardiglio (9306-94) OP5041AR	Argento Romano (6697-46) OP15038AR	Perlato Granite (3522-46) OP5042AR	Café di Pesco (4952K-22) OP5043AR	Lisola (5043K-15) OP5044AR	Lakeshore (5046K-15) OP50458AR	Benjamin Grey (1887K-22) OP5046AR	Winter Carnival (3476-46) OP0547AR
							
Marmo Bianco (1885K-07) OP15047AR	Drama Marble (5010K-07) OP15048AR	Italian White di Pesco (4954K-22) OP15044AR	Typhoon Ice (4952K-22) OP15049AR	Sombra (5028K-07) OP15050AR	Crema Mascarello (3422-RD) OP15041AR	Dolce Vita (3420-46) OP15042AR	Spring Carnival (1876K-52) OP5048AR
							
Glacier Quartzite (5025K-22) OP15046AR	Antique Mascarello (3466-RD) OP15037AR	Fantasy Marble (9301-34) OP15043AR	Cafe Azul (6319-RD) OP15040AR	Jet Sequoia (3476-46) OP15045AR	Calacatta Marble (3460-46) OP15036AR		

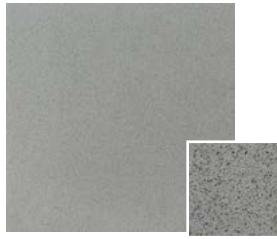
QUARTZ COUNTERTOP-GROUP A



Frost White
(QSL-FRSTWHT)
OP15065R



Bayshore Sand
(QSL-BAYSHRSND)
OP15070R

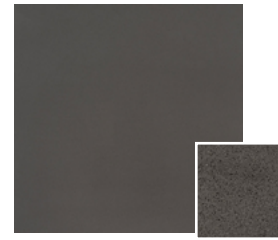


Iced Gray
(QSL-ICEDGRY)
OP15064R

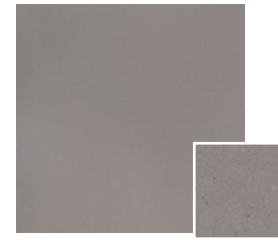


Sparkling White
(QSL-SPRWHT)
OP15071R

QUARTZ COUNTERTOP-GROUP B



Manhattan Gray
(QSL-MANHATGRY)
OP15079R



Fossil Gray
(QSL-FOSGRY)
OP15075R



Cararra Mist
(QSL-CARRMIST)
OP15077R



Shell White
(QSL-SHLWHT)
OP15078R



Cararra Morro
(QSL-CARMORRO)
OP15074R



Cararra Miska
(QSL-CARMIKSA)
OP15076R

QUARTZ COUNTERTOP-GROUP C



Calacatta Botanica
(QSL-CALABOTNICA)
OP15084R



Calacatta Laza
(QSL-CALALAZA)
OP15087R



Soapstone Metropolis
(QSL-SPSTNMETROPOLIS)
OP15083R

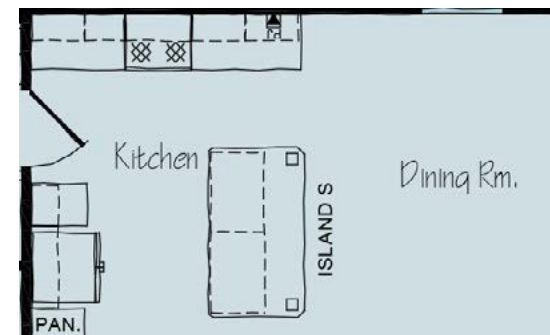
COUNTERTOP THICKNESS

All quartz groups will be 3cm thick in the Kitchen and 2cm thick in the bathrooms. Vanitease options will be 2cm thick



DESKS & ISLANDS

Kitchen islands have become a real icon of the modern kitchen. Our kitchen islands come in a variety of shapes and sizes, and have the ability to be interchanged with a similar sized island to the one on the original plan.



STANDARD DESK



Desk A Kitchen Unit
OP16000AR



Desk B 60" Hall Unit
OP16001AR



Desk C 57"x57" Corner Unit
OP16002AR



Desk D 81" Office Unit
OP16003AR



Desk E 135" Office Unit
OP16004AR

ISLANDS



Island A
4'3"x2'3" Island with 1" overhang all sides and receptacle on one end.
OP16005AR



Island I
6'4"x3'3" Island with overhang, kneehole on backside, glass doors square on one end and solid doors on opposite end, fluted legs at each corner and receptacle on backside of solid door cabinet.
OP16010AR



Island B
4'3"x3' Island with 1" overhang on front and sides and 11" overhang on backside and receptacle on one end.
OP16006AR



Island J
6'9"x3'6 1/2" Island with 1" overhang on front and one side, raised bar with 13" overhang on back with leg supports, 24"x42" shelf section on side, receptacle on one end.
OP16011AR



Island E
Angled Island with 1" overhang on front and sides, 11" overhang on backside with receptacle on one end **OP16007AR**

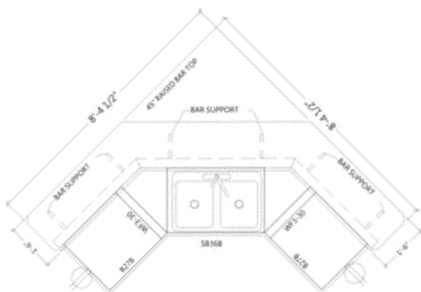


Island F
Angled Island with 1" overhang on front and sides, raised bar with 13" overhang on backside, receptacle on one end.
OP16008AR
Stone Backing **OP16009AR**

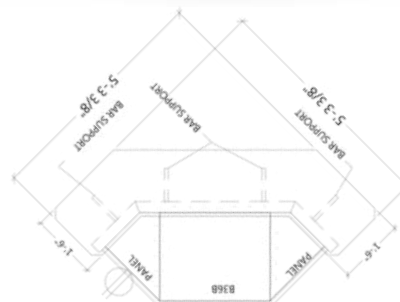




Island K
 Double angle island with 1" overhang on front and sides, raised bar with 13" overhang on backside, receptacle on both ends. (Shown with sink, will accommodate dishwasher)
OP16012AR
OP16013AR (stone backing)



Island L
 Double angle Island with 1" overhang on front and sides, raised bar with 13" overhang on back with supports, receptacle on one end.
OP16014AR



Island N
 4'6"x3'1" Island with 11" overhang on back, full leg supports each end and receptacle on one end.
OP16015AR



Island S
 6'5"x3'5" Island with overhang on back, (2) pots and pans drawers, and (2) straight legs. Receptacle on one end
OP16019AR





Island T
 9'4"x4'2"
 (2) large pots and pans
 drawers, and (2) straight
 legs
OP16020AR



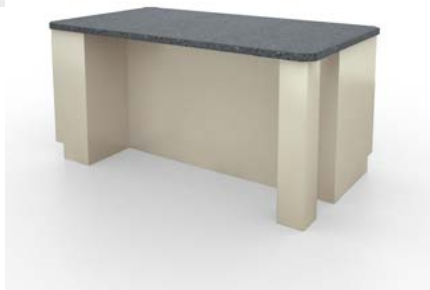
Island Q
 8'4"x3'5" island with
 overhang on back,
 bookshelf on side.
OP16017AR



Island P
 6'4"x3'5" island with
 overhang on back, (2) 4
 bank of drawers. 39"
 cabinet on side.
OP16016AR



Island R
 5'4"x3'5" island with
 overhang on back, 2
 drawer pots and pans.
 39"
 cabinet on side.
OP16018AR





INTERIOR DOORS & TRIM

TRIM PACKAGES

- OP17017AR-STANDARD PACKAGE** - Any door style in hollow core only, Trim Style 1, white only
- OP17025R-PACKAGE A** - Any door style in solid core, Trim Style 1, white or coffee
- OP17026R-PACKAGE B** - Any door style in solid core, Trim Style 2, white only, mitered on doors and windows.
- OP17027R-PACKAGE C** - Alder 3 Panel Door; Flat Sappy Cherry 3" casing, 4" base trim, butted installation.

TRIM STYLE



6 PANEL DOOR



3 PANEL DOOR



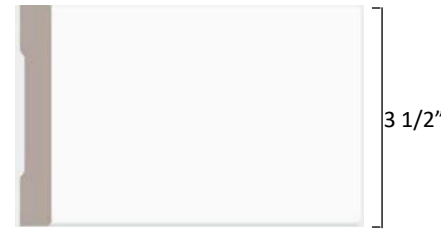
2 PANEL DOOR

STYLE 1 (STANDARD & PACKAGE A)

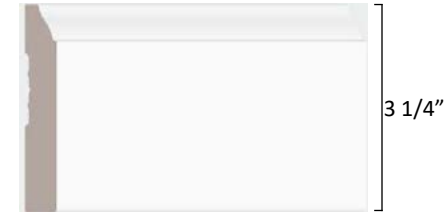


CASING

STYLE 2 (PACKAGE B)



CASING



BASEBOARD



BASEBOARD

TRIM COLOR



WHITE



COFFEE

PACKAGE C



ALDER DOOR



CASING

3"



SAPPY CHERRY TRIM



BASEBOARD

4"

BARN DOOR HARDWARE



Brushed Nickel or Matte Black barn door hardware on door to match

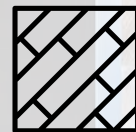
OP17001AR

Optional Pocket Doors (without privacy lockset)

OP17013AR

Optional Pocket Doors (with privacy lockset)

OP17014AR



FLOORING

ADVANTAGE SERIES CARPET

Take Away Carpet

- Nylon fibers and Polypropylene backing
- CRI Certification
- Recyclable
- Resilient
- 15 oz. Carpet



00128 Wells Beach
OP18018A



00512 Driftwood
OP18016A



00502 Shadow
OP18017A



00703 Canoe
OP18063A

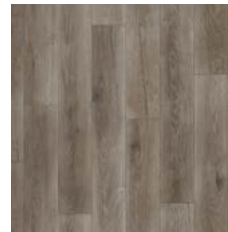
STANDARD VINYL FLOORING



Meteor Highlight
LX301 OP18066AR



European Oak Aspen
LX327 OP18027AR



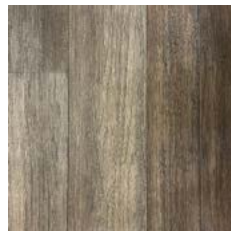
European Oak Thunder
LX325 OP18067AR



Aged European Oak Farmstead
LX310 OP18019AR



Aged European Oak Natural
LX311 OP18068AR



Artisan Dusky Acorn
LX350 OP18069AR



Barn Wood Vintage White
LX275 OP18022AR



Barn Wood Greige
LX277 OP18021AR



Beachside Sundance
LX355 OP18070AR

ROCHESTER SERIES "TRUE SPIRIT" CARPET 40 OZ.



511 City Space
OP18029AR



502 Lady Liberty
OP18030AR



507 Concrete
OP18031AR

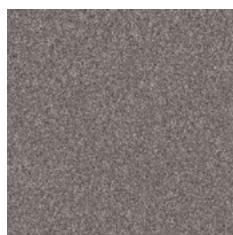


705 Cottage
OP18036AR

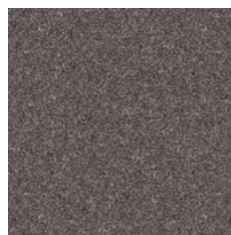


701 Truffle
OP18037AR

ROCHESTER SERIES "YES YOU CAN" CARPET 60 OZ.



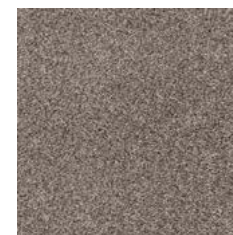
00509 Vintage
OP18038AR



00502 Shadow
OP18039AR



00107 Frozen
OP18040AR



00116 Warm Light
OP18041AR



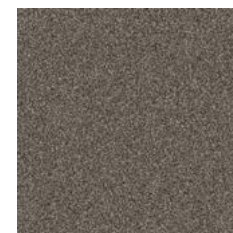
00705 Mission Ridge
OP18043AR



00109 Natural
OP18042AR



00113 Cameo
OP18064AR

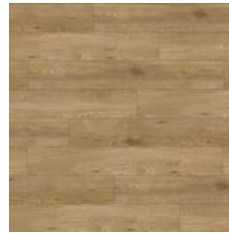


00708 Urban Rustic
OP18065AR

GENCORE PLANK FLOORING - 7.08" X 48.03



- Embossed Wear Layer
- High Definition Printed Film
- Rigid Core
- Patented Interlocking System
- Limited Warranty
- 100% Waterproof



Bedford LUM-108
OP18066R



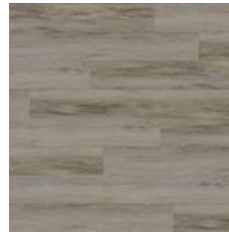
Gansavort LUM-110
OP18067R



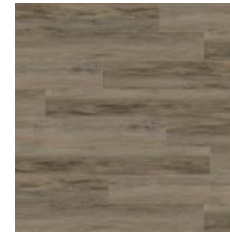
Grove LUM-111
OP18068R



Jane LUM-114
OP18069R



Fairview LUM-804
OP18070R



Salem LUM-805
OP18071R



Avon LUM-809
OP18072R



Roan LUM-811
OP18073R



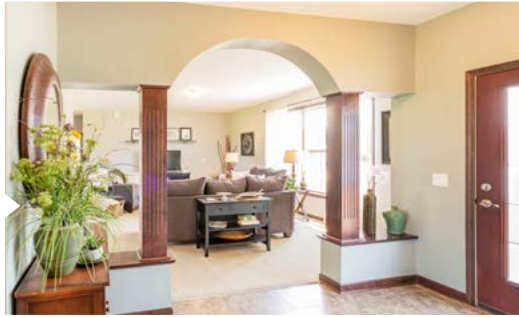
INTERIOR FINISH

COLUMNS



Fluted wood column to match trim per pair
OP19007AR

Grand Archway 5' arch with fluted columns, wood capped 1/4 walls
OP19001AR



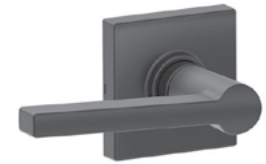
INTERIOR FINISHES



Closet Organizer Component Additional. White Only
OP19014AR
*standard in Master Walk-in Closet



Passage Door Lever -Brushed Nickel



Passage Door Lever -Matte Black



Privacy Door Lever -Brushed Nickel



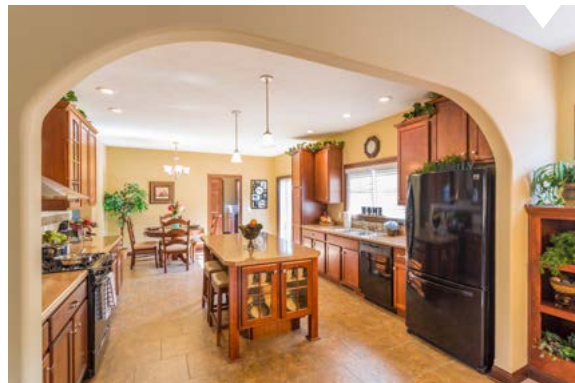
Privacy Door Lever -Matte Black

DRYWALL OPTIONS



Drywall arch
4' **OP19008AR**
5' **OP19009AR**

Large opening drywall arch
OP19010AR



Coffered Ceiling with white crown moulding
OP19002AR



Tray Ceiling with 4 recessed can lights
OP19011AR



1345 N. LUCAS ST. | ROCHESTER, INDIANA 46975

TOLL-FREE: 800.860.4554

LOCAL: 574.223.4321

FAX: 574.223.1655