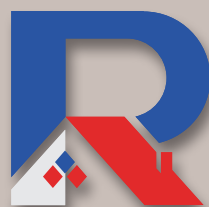
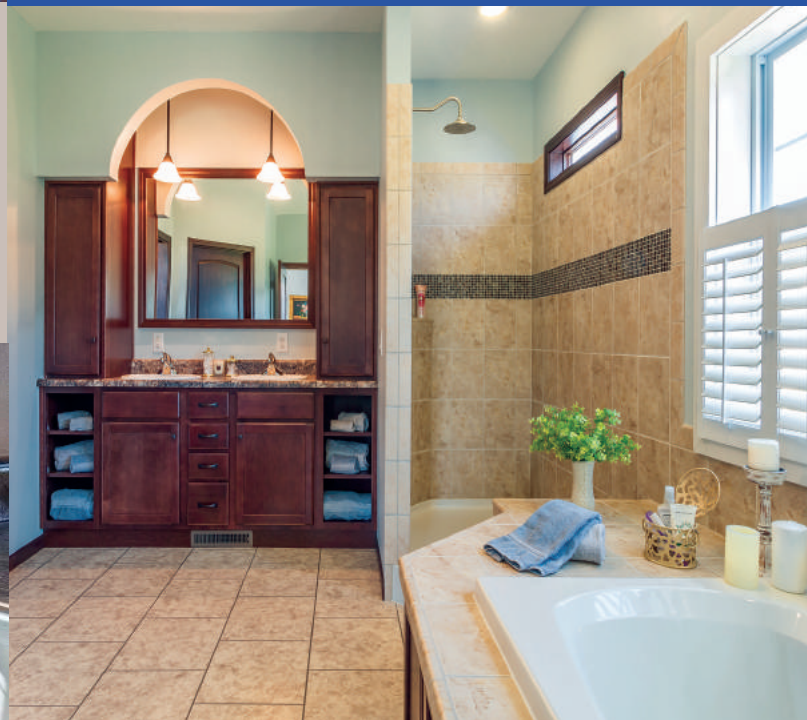




For the things
that make your house
...**your Home.**

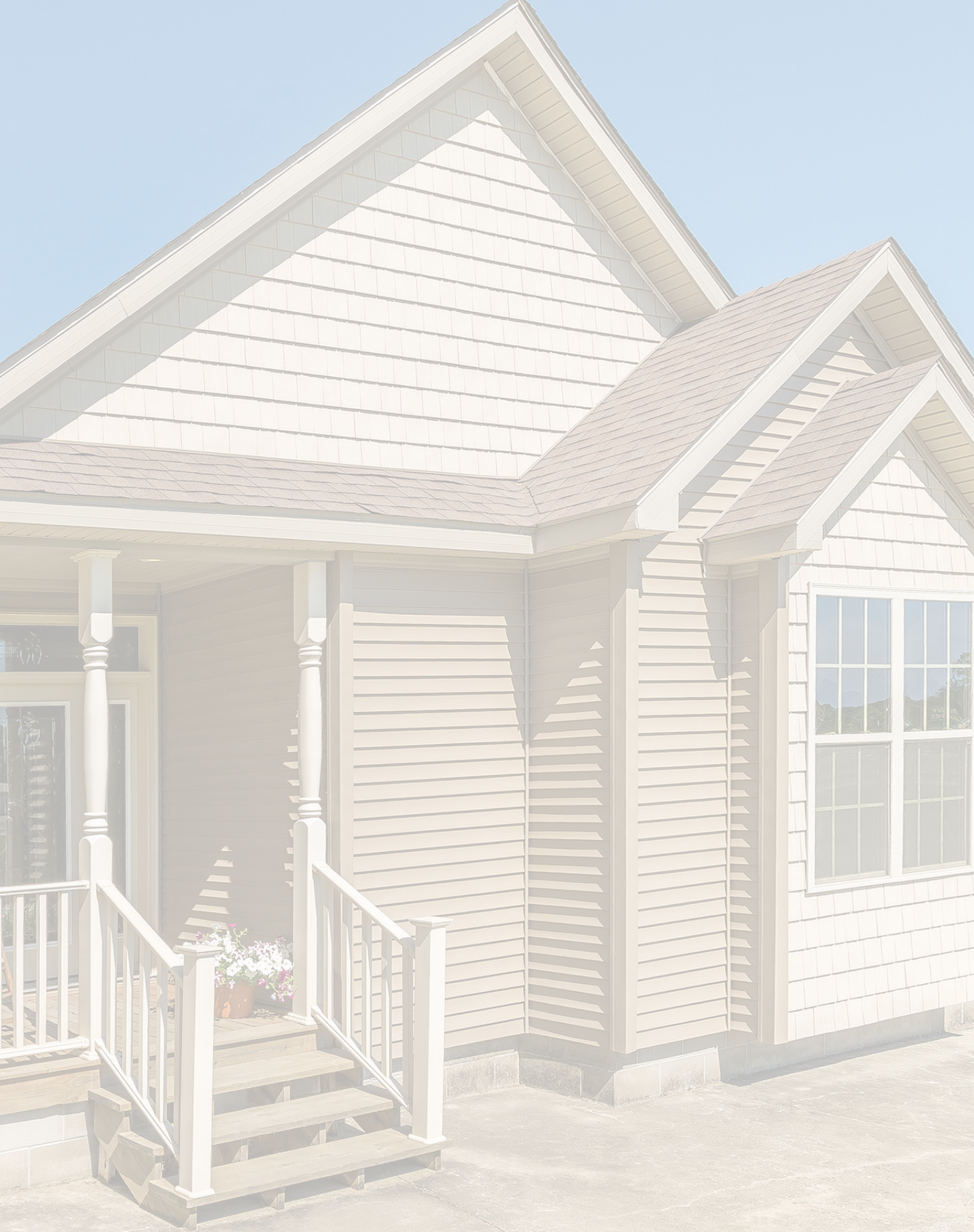


ROCHESTER
— H O M E S —

and

Griffith Homebuilders

Consumer Product Guide



Consumer Product Guide

This book is designed to give you a better view of the options that are available for your new home. Please feel free to visit our website, www.rochesterhomesinc.com for more information.

INDEX

Structural Additions.....	Sec 1
Fireplace Options.....	Sec 2
Window Options.....	Sec 3
Structural Options.....	Sec 4
Plumbing Options.....	Sec 5
Electric Options.....	Sec 6
Exterior Trim.....	Sec 7
Exterior Doors.....	Sec 8
Siding & Shingles.....	Sec 9
Cabinet Options.....	Sec 10
Specialty Cabinets and Hoods.....	Sec 11
Countertop Options.....	Sec 12
Desks & Islands.....	Sec 13
Interior Doors & Trim.....	Sec 14
Flooring Options.....	Sec 15
Interior Finishes.....	Sec 16
Appliance Options.....	Sec 17

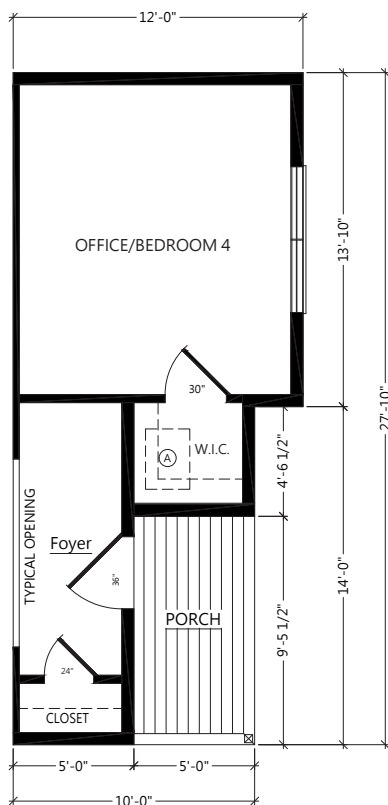




THIRD BOX CONFIGURATIONS

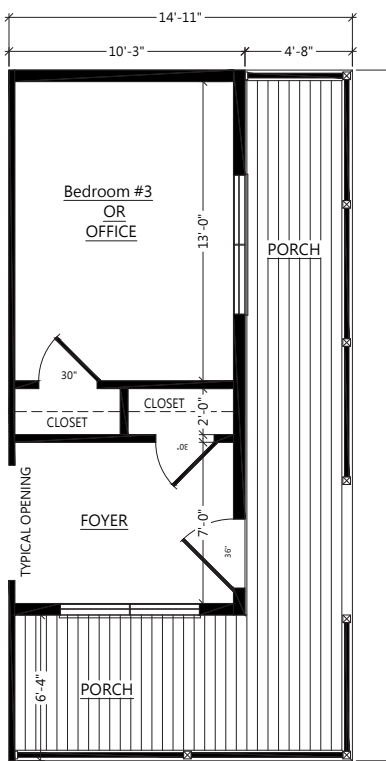
Add one of our third box configurations to any home for more space and a great look.

PORCH UNIT A



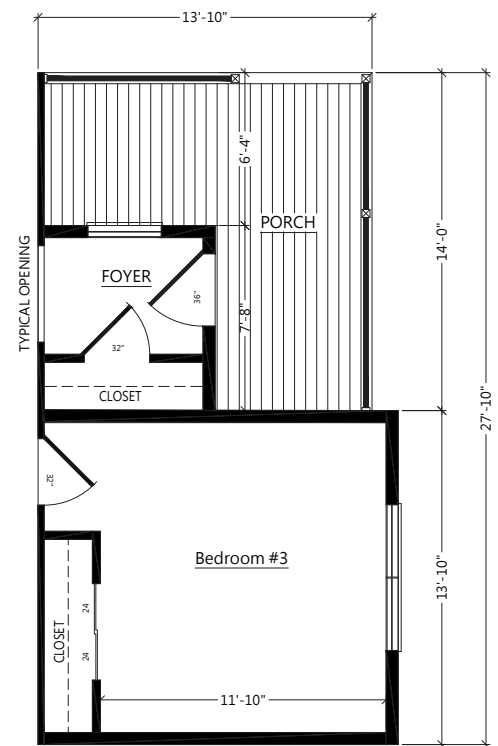
Porch Unit A • 0P839- **\$13,000**

PORCH UNIT B



Porch Unit B • 0P8391- **\$13,000**

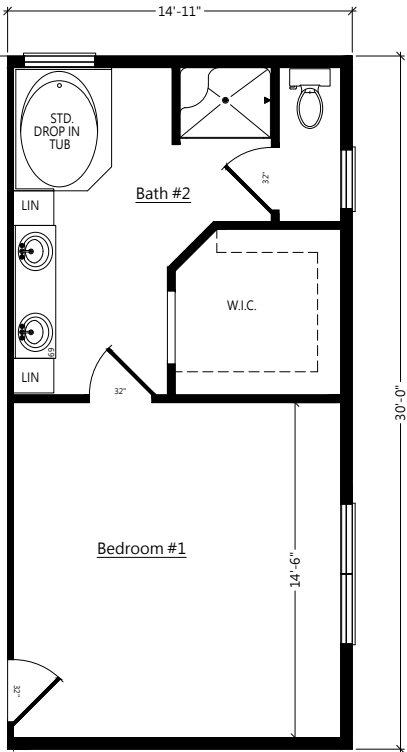
PORCH UNIT C



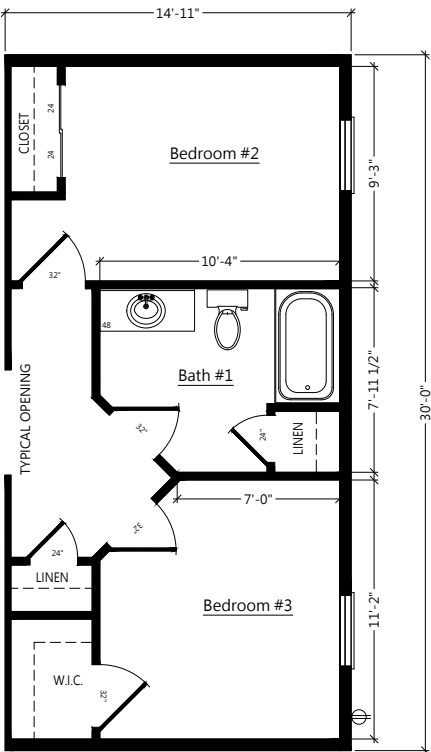
Porch C • 0P8392- **\$15,000**

THIRD BOX CONFIGURATIONS

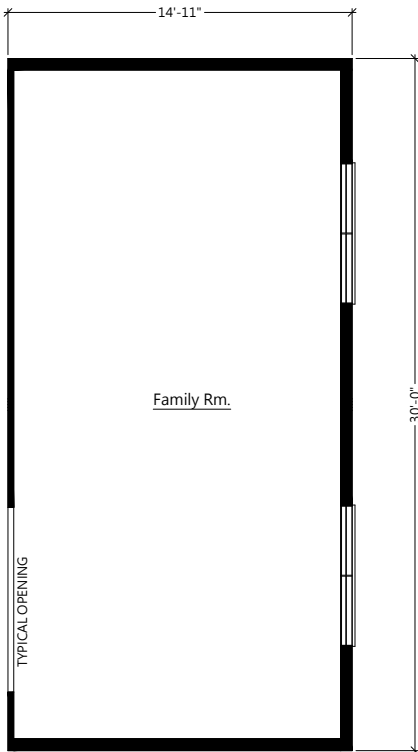
BED BATH UNIT A



BED BATH UNIT B



FAMILY ROOM



Bed Bath Unit A • 0P840- \$19,250

Bed Bath Unit B • 0P8401- \$18,250

Family-26ft • 0P841- \$14,250

Family-28ft • 0P843- \$14,500

Family-30ft • 0P844- \$14,850



Dutch Gable & Bump Out

Available on 6/12 or 9/12 Ranch or Two Story

Left: Roof Return Bumpout with 8' Sidewall, Roof Return, (2) 3050 operable windows, and shutters **OP103-\$1,850**

• **AOP568-\$1,850**

Right: No Roof Return Bumpout Shown with 8' Sidewalls, (2) 3050 Operable Windows, and Shutters **OP107-\$1,800**

• **AOP567-\$1,800**



Bump Out Available on 6/12 or 9/12 Ranch or Two Story

Left: Roof Return Bumpout Shown with 8' Side wall, Roof Return, (2) 3050 Operable Windows, Shutters

• Ranch-**OP95-\$1,610** • Two-Story-**OP99-\$1,560** **AOP570-\$1,610**

Right: No Roof Return Bumpout Shown with 8' Side Wall, (2) 3050 operable Windows, and Shutters

• Ranch-**OP99-\$1,560** • **AOP569-\$1,560**
Two-Story-**OP101-\$1,800**



Gable & Bumpout

Available on 6/12 or 9/12 Ranch or Two Story

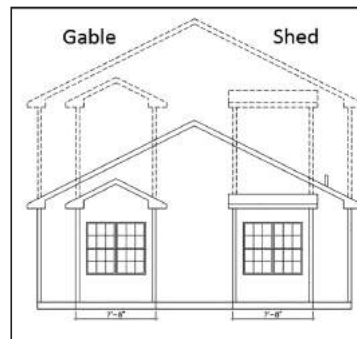
Left: 10" Gable (left), 10" Shed (right) Shown with 3050 windows, shutters not available

• Ranch Gable-**OP110-\$560** • **AOP564-\$560**

TS Gable-**OP111-\$865**

• Ranch Shed-**OP112-\$575**

TS Shed-**OP113-\$920**



Gable & Bumpout Two Story

Available on 6/12 or 9/12 Two Story

Left: Square Window Bumpout Shown with (2) 3050 Windows and Shutters • **OP96-\$2,300**

Right: Round window Bumpout Shown with 6030 Fixed and 72" 1/2 Round Window • **OP97-\$2,200**

STRUCTURAL ADDITIONS



5' 9 1/2" Dormers Available 9/12 or 12/12

Left: 5' 9 1/2" Gable Dormer with 3046 operable window • **OP85-\$1,200**

Right: 5' 9 1/2" Gable Dormer with 3046 operable window and 36" 1/2 Round window • **OP88-\$1,550**

11' Dormers Available 12/12

Left: 11' Wide Gable Dormer with (2) 3050 Fixed or Operable Windows • **OP989-\$3,600**

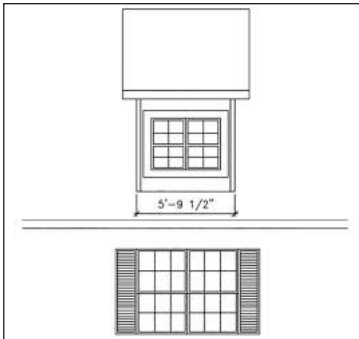
Right: 11' Wide Gable Dormer Shown with (2) 3050 Fixed or Operable Windows • **OP984-\$4,100**



Shed Dormers Available 30 Wide 9/12 or 12/12

Left: 5' 9 1/2" with (2) 2030 Operable windows • **OP832-\$1,750**

Right: 11' Wide with (4) 2030 Fixed or Operable Windows • **OP985-\$3,800**



8' Covered Porch • Available Ranch only
OP8-\$6,800 • AOP543-\$6,800

Full width porches or half width available.
Porches can only be built on gable ends.



FIREPLACE OPTIONS



Fireplaces A and C

Left: Fireplace A Stone front corner fireplace. Shown with Charleston Stone and Traditional Mantle.

Ranch Gas • **OP70-\$4,150** Wood • **OP68-\$3,200**

Gas • **AOP595-\$4,150**

Cape Gas • **OP71-\$4,500** Wood • **OP69-\$3,700**

Wood • **AOP596-\$3,200**

Right: Fireplace C Stone Front Flat Fireplace Hampton Gray and Traditional Mantle shown.

**Media prep and outlet not included.*

Ranch Gas • **OP920-\$4,150** Wood • **OP922-\$3,200**

Gas • **AOP599-\$4,150**

Cape Gas • **OP919-\$4,525** Wood • **OP921-\$3,650**

Wood • **AOP600-\$3,200**



Fireplaces E and H

Left: Fireplace E Optional Stone Front Half Wall Fireplace. Shown with Baugo Creek Fieldstone.

**Media prep and outlet not included.*

Ranch Gas • **OP924-\$4,025** Gas • **AOP601-\$4,025**

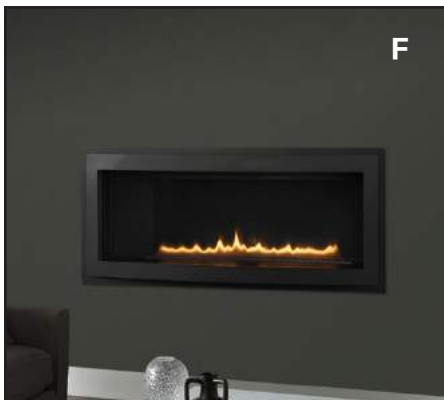
Cape Gas • **OP923-\$4,400** Wood • **OP925-\$3,500**

Wood • **AOP602-\$3,050**

Right: Fireplace H Includes: Buck Creek Stone Front Fireplace (wood burning or gas), Farmhouse Mantle

Ranch Gas • **OP9265-\$5,000** Wood • **OP9267-\$4,550**

Cape Gas • **OP9266-\$5,650** Wood • **OP9268-\$5,075**



Fireplaces F and G

Left: Fireplace F Rave Fireplace. Includes: Modern Fireplace with Black Trim

(Gas only)

Ranch Gas • **OP8141-\$3,650**, **AOP5951-\$3,650**

Cape Gas • **OP9151-\$4,075**, **AOP5961-\$4,075**

Right: Fireplace G Farmhouse Fireplace. Includes: Stone Front Fireplace (wood burning or gas), Shelving with raised hearth and mantel, windows, media prep, (4) can lights and (2) eyeball lights. Total length: 17'4"

Ranch Gas • **OP9262-\$5,600** Wood • **OP9261-\$5,100**

Cape Gas • **OP9264-\$6,025** Wood • **OP9263-\$5,525**



Traditional Mantle



Farmhouse Mantle • OP76-\$625



Mantle stain matches trim package

60 in. Beam Mantles • OP75-\$100



Farmstead



Weathered

*Mantles are constructed out of Maple

All Selections Available in Wood Burning, or Natural Gas Log with Wall Switch. All Flue Assemblies Shipped Loose and Installed by Other Than RHI. All standard with 2 eyeball lights and blowers, raised hearth and mantel. Mantel will be stained to match trim package. Colors may vary from pictures shown here.

Colonial Grids Standard



Triple Casement Window
 • Silverline OP2711-~~\$450~~
 • Andersen OP2712-~~\$650~~



Vinyl Windows

Available in white or beige with matching vinyl interior

- Low Maintenance Vinyl Interior and Exterior
- Standard with Screens & Grids
- Low-E2 Argon Glass
- Casement Window in Kitchen
- 6' 0" Also available with 9' Sidewall Option
- Available in Double Hung
- Some Transoms & Half Rounds also available
- Passive Solar Glazing
- Limited Lifetime Warranty*



White



Sandtone

Available from SilverLine

- Vinyl WDO 3050 • OP257-~~\$350~~ • AOP138-~~\$350~~
- Vinyl WDO 3060 • OP259-~~\$50~~
- Vinyl WDO 2050 additional • OP261-~~\$325~~
- Vinyl WDO 2030 tempered glass additional • OP262-~~\$310~~ • AOP140-~~\$310~~
- Vinyl WDO 2630 tempered glass additional • OP263-~~\$325~~ • AOP141-~~\$325~~
- Vinyl WDO 4050 w/two flanking windows • OP266-~~\$415~~ • AOP142-~~\$375~~
- Vinyl WDO Transom 12 inch • OP268-~~\$200~~
- Vinyl WDO Awning 3015 • OP2691-~~\$350~~

Specialty Windows



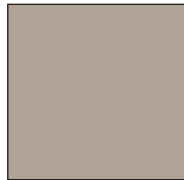
400 Series Wood Windows

Available in white, sandtone, or black with white painted wood interior

- Interior Wood Painted White
- Wood Frame with Exterior Vinyl Clad
- Wood Sashes with Flexacron Finished Exterior
- High Performance Low-E4 Argon filled glass
- Standard with colonial grids
- Comes Standard Double Hung with Casement in Kitchen
- Tru-View insect screen
- Heatlock glass
- Limited Lifetime Warranty*



White



Sandtone



Black

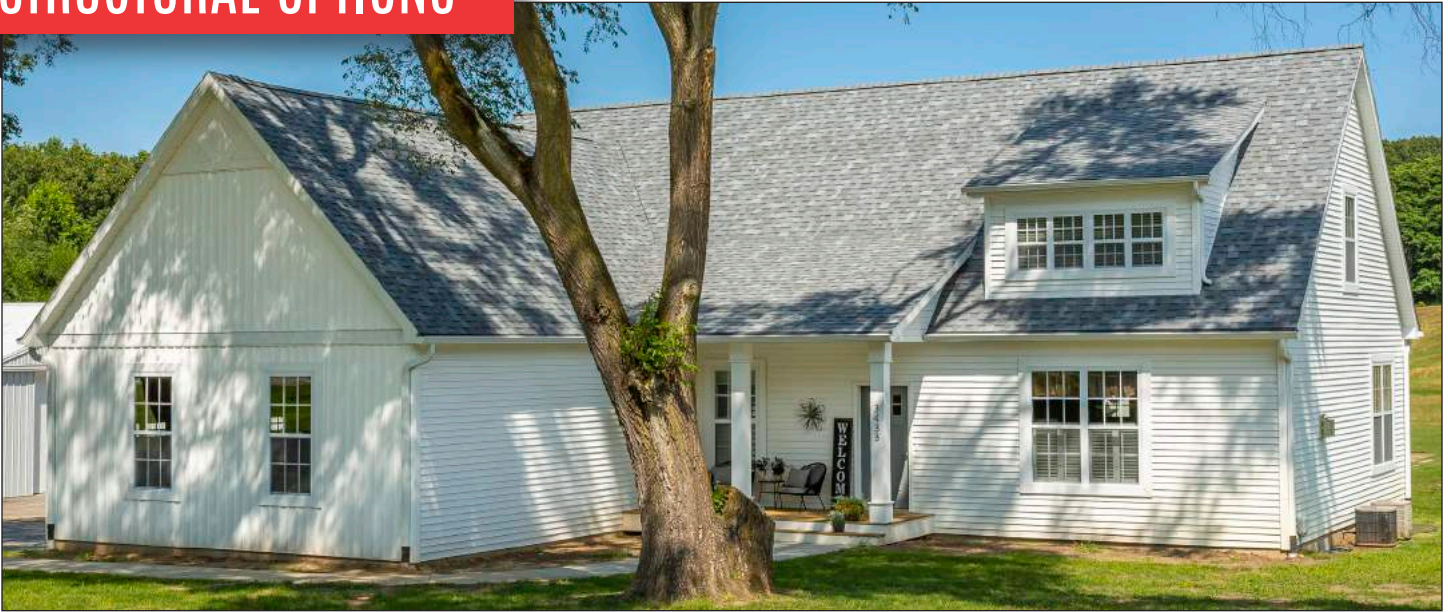


Left: Vinyl window 2040 tempered window with plantation shutters • OP625-~~\$350~~

Right: Acrylic Block window

38"/8" • OP282-~~\$260~~

42"/42" • OP281-~~\$550~~ • AOP144-~~\$550~~



Lofted Cape Options

These loft options come with an unfinished cathedral interior to be finished on site by others. Shipped with no insulation or drywall.

Left: Shown with Round Top and 1/4 Round Windows and (2) Optional Patio Doors

- 26W **OP124-\$3,500**
- 28W **OP125-\$4,400**
- 30W **OP897-\$5,000**

Right: Shown with Two Trapezoid Windows and (2) Optional Patio Doors

- 26W **OP121-\$3,500**
- 28W **OP122-\$4,400**
- 30W **OP896-\$4,800**



Lofted Cape & 9/12 Cathedral

These loft options come with an unfinished cathedral interior to be finished on site by others. Shipped with no insulation or drywall.

Left: Lofted Cape Shown with (2) 3/0 x 3/0 Windows, and (2) 3/0 x 6/0 Windows, (2) Optional Patio Doors

- 26W **OP845-\$2,500**
- 28W **OP846-\$3,500**
- 30W **OP895-\$4,500**

Right: Shown with standard window configuration of (2) 3/0 x 3/0 Windows, and (1) 3/0 x 6/0 windows, (2) Optional Patio Doors

- 26W **OP847-\$4,000**
- 28W **OP848-\$4,600**
- 30W **OP894-\$5,000**





Attics

Right: Attic or habitable 12/12 with 3/4 deck and 2x6 endwalls. R30 insulation under floor.

Left: Attic non habitable 9/12 with 3/4 deck and 2x6 attic endwalls w/R25 insulation under floor. (non habitable)
See Sales Rep for pricing options.



Stairway

Add a full stairway to any ranch with a 9/12 or 12/12 roof pitch. See Sales Rep for pricing options.

Right: Optional Attic drop down steps for 9/12 roof pitch, R38 insulation, no decking • **OP132-\$400**



Below: Structural Misc.

Recessed entry with stone or siding to bottom of door. Floor panned for onsite concrete 16" or 24".
* Shown with stone

Stone • **OP139-\$2,100**

Siding • **OP138-\$575** • **AOP30-\$575**





Standard DELTA Faucets



Single Handle Kitchen
Faucet with Spray
– Polished Chrome



Bathroom Faucet
– Polished Chrome



Shower Trim
– Polished Chrome



Tub/Shower Trim
– Polished Chrome



Two Handle Laundry Faucet
– Polished Chrome

Stand Alone Tub DELTA Faucets



Roman Tub Trim
– Polished Chrome



Roman Tub Trim
– Brushed Nickel



Roman Tub Trim
– Oil Rubbed Bronze

Brushed Nickel/ Oil Rubbed Bronze DELTA Faucet Upgrade • OP177 \$600 • AOP64 \$600



Single Handle Kitchen Faucet with Spray – Brushed Nickel



Single Handle Kitchen Faucet with Spray – Oil Rubbed Bronze



Bathroom Faucet – Brushed Nickel



Bathroom Faucet – Oil Rubbed Bronze



Shower Trim – Brushed Nickel



Shower Trim – Oil Rubbed Bronze



Tub/Shower Trim – Brushed Nickel



Tub/Shower Trim – Oil Rubbed Bronze

Alternate DELTA Faucet Upgrades

• OP201 \$180 • AOP82 \$180



Single Handle Pull-Down Kitchen Faucet – Polished Chrome



Single Handle Pull-Down Kitchen Faucet – Brushed Nickel



Single Handle Pull-Down Kitchen Faucet – Oil Rubbed Bronze

• OP203 \$250 • AOP84 \$250



Single Handle Bar Faucet – Polished Chrome



Single Handle Bar Faucet – Brushed Nickel



Single Handle Bar Faucet – Oil Rubbed Bronze



Showers



Left: Shower A-60" Tub/Shower Standard

Right: Shower C-48" shower with sliding enclosure in place of 48" fiberglass with sliding enclosure

• OP1073-~~\$200~~



Left: Shower D-60" shower with enclosure in place of tub/shower. • OP180-~~\$215~~

Also available with ceramic on walls, no seats.
Shower C • OP189-~~\$1,530~~ Shower D • OP190-~~\$2,040~~

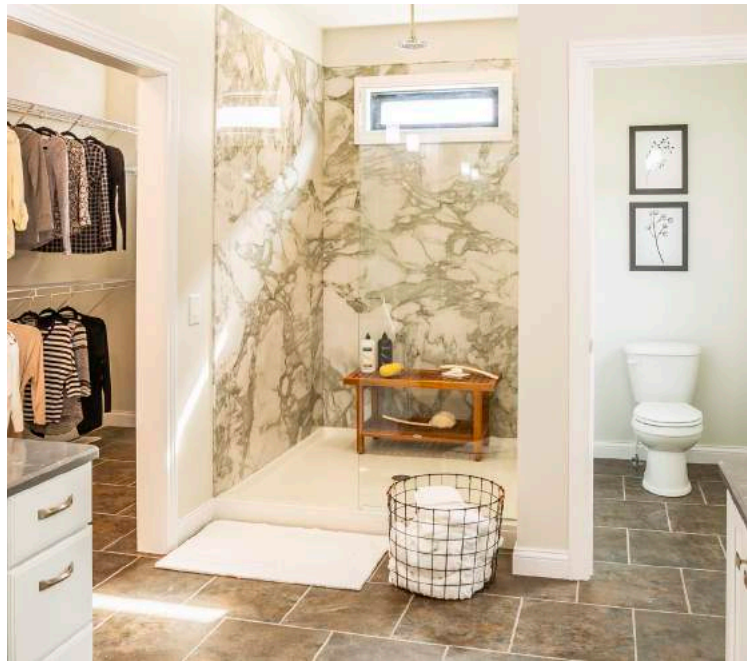
Right: Shower E-60x43 bench shower in place of standard tub/shower

OP181-~~\$800~~ • AOP67-~~\$750~~

Showers

Right: Shower Oh! acrylic paneled shower with cultured marble print. 5'x5' shower pan with rainfall showerhead. Standard with transom window and two shower heads.

IPO 48" Shower and drop in tub
OP1811 - \$2,750
 IPO 48" Shower
OP1812 - \$3,750



Left: Roll in shower— 50x50 in place of standard w/(1) grab bar
OP196 - \$600 • AOP77 - \$600
 Fold down seat in roll in shower
OP197 - \$650 • AOP78 - \$650
 Grab bar for tub/shower (1)
OP200 - \$250 • AOP81 - \$250

Right: Tub/ Shower G Fiberglass tub with ceramic tile on wall. Beige or Grey with accent. **OP1841 - \$2,150**

Not Pictured: Hand held shower head (shower head only)
OP199 - \$200 • AOP80 - \$200

* Add Whirlpool to any tub or tub/shower combo **OP193 - \$750 • AOP74 - \$750**



60in Chrome Barn Shower Door

- Contemporary barn door w/ a minimalist design
- Slim stainless header with 18 in. handle
- Chrome finish
- 78 3/4" high clear glass panel
- 8 mm (5/16") tempered glass with Lotus easy clean protection
- Detachable door guide to distance the glass when cleaning

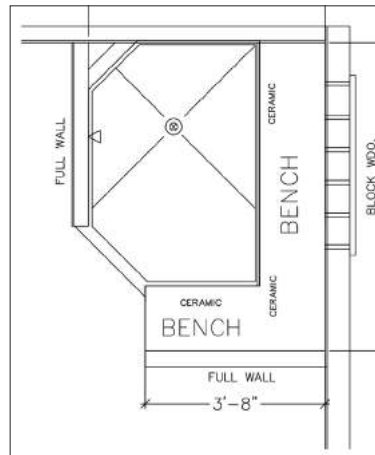
(Available with Shower OH! and 60in. Ceramic Only)
OP2022 - \$500 • AOP2022 - \$500

Serenity Showers



Pictured Left: Shower N1

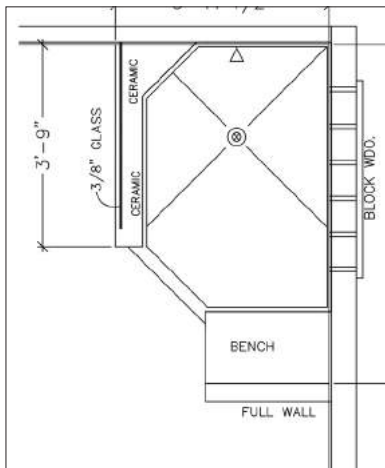
Serenity ceramic walk in shower with bench, standard with block window (not shown), can light, rainfall showerhead, and Delta Components • **OP994-\$2,300**



Shower N2

Serenity ceramic walk in shower with full bench, standard with block window, can light, rainfall showerhead and Delta components • **OP1145-\$2,575**

*Layout shown for N2 and N4



Shower N3

Serenity ceramic walk in shower with bench, 1/2 wall, and glass, standard with block window, can light, rainfall showerhead and Delta components • **OP1146-\$3,125**

*Layout shown for N1 and N3

Shower N4

Serenity ceramic walk in shower with full bench, 1/2 wall with glass, standard with block window, can light, rainfall showerhead and Delta components • **OP1147-\$3,425**



*Available in Beige or Gray Tile

Tranquility Baths

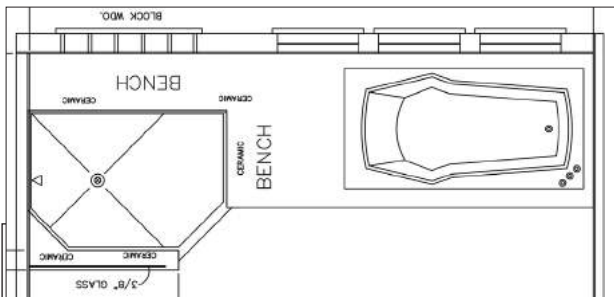
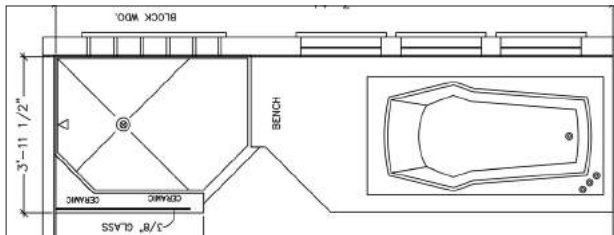
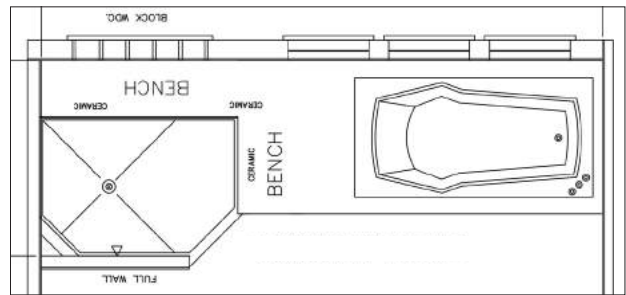
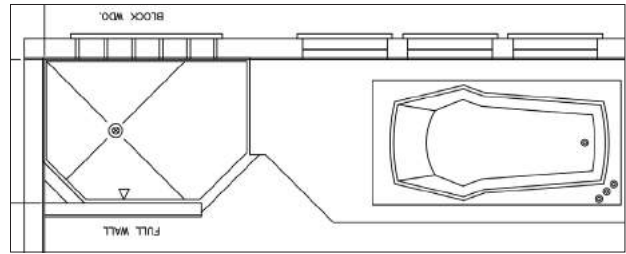
*Available in Beige or Gray Tile

T1-Ceramic walk in shower w/72" tub, may change plan, total length 14' 2". Includes windows & shutters shown, can light, rainfall shower head and Delta components •

OP872-\$3,200

T2-Ceramic walk in shower w/72" tub, may change plan, total length 14' 2". Includes full bench, windows & shutters shown, can light, rainfall shower head, and Delta components •

OP1149-\$3,475



T3-Ceramic walk in shower w/72" tub, may change plan, total length 14' 2" Includes 1/2 wall, and glass, windows & shutters shown, can light, rainfall shower head and Delta components •

OP1148-\$3,625

T4-Ceramic walk in shower w/72" tub, may change plan, total length 14' 2". Includes full bench, 1/2 wall with glass, windows & shutters shown, can light, and rainfall shower head •

OP1150-\$3,925



PLUMBING OPTIONS



Sinks

Left: Standard stainless steel kitchen sink 7 1/4" depth

Right: Standard china lav bowl

Left: Kohler Vault Stainless Steel Single Bowl topmount, 10" depth
OP2020-\$300

Right: Composite Kitchen sink available in white or bone
OP202-\$50 • AOP83-\$50



Left: Double lavs **OP178-\$200 • AOP62-\$200**



Right: Black Kitchen Sink
 • Crafted from Natural Quartz
 • Stain, impact, heat, and scratch resistant
 • Sound-deadening material
 • Hygiene protection
 • **OP2021-\$400**

Left: Drop down bath sink • **OP2000**

Right: Lowered kitchen sink for wheel-chair access • **OP2001**



Left: Washtub installed in cabinet
OP206-\$250 • AOP87-\$250

Center Pedestal Sink **OP178-\$200**

Right: Elongated Toilet (no photo)
OP179-\$100 • AOP63-\$100
Physically challenged comfort height
OP194-\$175 • AOP75-\$175



Tubs



Tub M – Ceramic backsplash for corner tub w/(1) row of accent tile • **OP192-\$800**



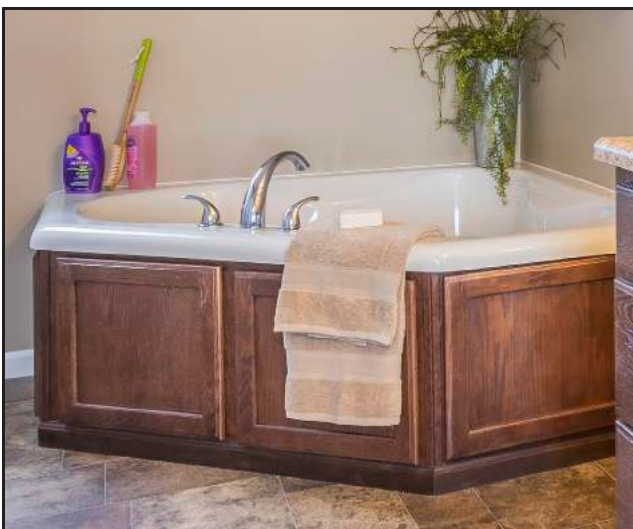
Tub L – Ceramic top on drop in tub, with 45” of backsplash, one row of accent tile • **OP191-\$1,100**



Tub G – Drop in tub with laminate top



Tub H – 72” tub in place of standard **OP904-\$250**
• **AOP501-\$250**



Tub I – Corner Fit Tub



Tub B – Garden tub/shower in place of standard **OP903-\$130** • **AOP500-\$130**

ELECTRIC OPTIONS



Standard Brushed Nickel Lighting



Standard Morning Room/ Open Foyer

Optional Foyer-**OP231-\$90**



Walk In Closet



Dining Room



Bedroom/Foyer



Optional Pendant
OP230-\$15



Exterior Coach

Optional Rustic Bronze Lighting



Walk In Closet



Bedroom



Optional Pendant
OP230-\$15

Standard Morning Room/ Open Foyer

Optional Foyer-**OP231-\$90**



Dining Room



Exterior Coach



Optional

USB/Power outlet in place of standard
USB/Power outlet Additional

OP1250-\$20 • AOP1001-\$20
OP1252-\$40 • AOP1002-\$40



Exterior Trim and Shutters



5 1/2" trim replace shutters white or clay
Ranch/Cape • **OP354-\$350** • **AOP162-\$450**
Two Story • **OP355-\$425**

Standard Raised Panel Shutters



Board and Batten Shutters replace standard
Ranch/Cape • **OP357-\$300**
Two Story • **OP358-\$300**





Winstone
Board & Batten/Raised



Dark Navy
Board & Batten/Raised



White
Board & Batten/Raised



Gray
Board & Batten/Raised



Black
Board & Batten/Raised



Pebblestone Clay
Board & Batten/Raised



Peppercorn
Board & Batten/Raised



Spanish Moss
Board & Batten/Raised



Blackwatch Green
Board & Batten/Raised



Red
Board & Batten/Raised

EXT Trim-Sandtone/Clay two story trim package window, door, drip edge, fascia, soffit
 EXT Trim-Sandtone/Clay cape trim package window, door, drip edge, fascia, soffit
 EXT Trim-White trim package window, door, drip edge, fascia, soffit
 EXT Trim-Sandtone/Clay ranch trim package window, door, drip edge, fascia, soffit

OP349-\$815
OP350-\$810
OP3481
OP348-\$500 • AOP161-\$500

THERMA TRU® DOORS



Door Handles



Brushed Nickel
Exterior door knob and dead-bolt standard



Rustic Bronze
Exterior door knob and dead-bolt standard



Brushed Nickel
Exterior door decorative handle
• OP337-**\$150**

Rustic Bronze
Exterior door decorative handle
• OP337-**\$150**

Patio Doors



Therma-Tru 2 panel hinged grids and screen
• OP343-**\$1,350**
• AOP158-**\$1,350**



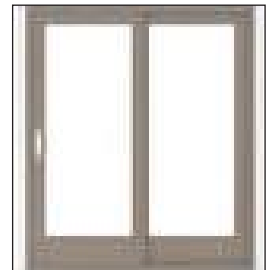
Vinyl 2 panel sliding with screen
• OP342-**\$500**
• AOP157-**\$500**



RS130 6068 HPD Therma Tru 2 panel hinged with blinds and screen • OP830-**\$1,550**
• AOP413-**\$1,550**



200 Series Perma Shield 2 panel gliding with screen. NO GRIDS. Int/Ext match • OP345-**\$1,550**



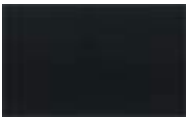
A Series 2 panel sliding w/screen. NO GRIDS. EXT. White painted Int
• OP344-**\$2,725**

NOT PICTURED: A Series 2 Panel Hinged. NO GRIDS. Choose EXT. White Painted Int. • OP346-**\$2,900**

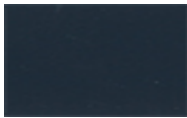
Door Colors



112 Apline



110 Onyx
OP1391 • AOP4111



130 Indigo
OP1392 • AOP4112



122 Sand



152 Cabernet
OP1393 • AOP4113



134 Blue
OP1398 • AOP4118



106 Granite
OP1394 • AOP4114



132 Wedgewood
OP1399 • AOP4119



144 Forrest Green
OP1395 • AOP4115



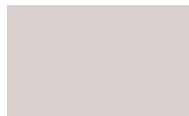
108 Gray
OP1351 • AOP4231



140 Candy Apple
OP1396 • AOP4116



138 Teal
OP1397 • AOP4117



104 Champagne
OP1400 • AOP4120



154 Maroon
OP1401 • AOP4121

Wood Grain Stains



Bark
OP1353 • AOP4233



Driftwood
OP1352 • AOP4232



Barley
OP1402 • AOP4234

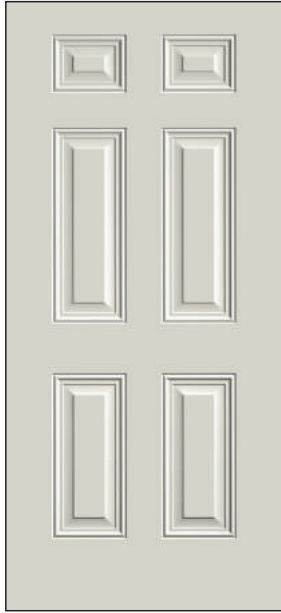


New Earth
OP1403 • AOP4235



Raven
OP1404 • AOP4236





Door A: Upgrade Steel 6 panel
20 min door w/20 min wood
jamb or a 90 min door with steel
jambrear door:
OP598-\$215 • AOP301-\$215



Door B: Decorative Oval:

Painted	Wood Grain
• OP599-\$475	• OP9431-\$645
• AOP302-\$475	• AOP3083-\$645
Sidelight:	
• OP3331-\$685	• OP3411-\$760
• AOP1361-\$385	• AOP1381-\$760
Transom:	
• OP3351-\$975	• OP3251-\$975
• AOP1391-\$975	• AOP1371-\$975



Door C: Decorative Full Axis Glass:

Painted	Wood Grain
• OP5991-\$495	• OP9432-\$655
• AOP303-\$495	• AOP3084-\$655
Sidelight:	
• OP3332-\$625	• OP3412-\$705
• AOP1362-\$625	• AOP1382-\$705
Transom:	
• OP3352-\$900	• OP3252-\$900
• AOP1392-\$900	• AOP1372-\$900



*Door D: 3/4 glass, twelve light:

Painted	Wood Grain
• OP5992-\$555	• OP9433-\$765
• AOP304-\$555	• AOP3085-\$765
Sidelight:	
• OP3333-\$575	• OP3413-\$750
• AOP1363-\$575	• AOP1383-\$750
Transom:	
• OP3353-\$375	• OP3253-\$375
• AOP1393-\$375	• AOP1373-\$375



*Door E: Six light, raised panel:

Painted	Wood Grain
• OP5993-\$350	• OP9434-\$650
• AOP305-\$350	• AOP3086-\$650
Sidelight:	
• OP3334-\$555	• OP3414-\$730
• AOP1364-\$555	• AOP1384-\$730
Transom:	
• OP3354-\$350	• OP3254-\$350
• AOP1394-\$350	• AOP1374-\$350

• Doors shown for style purposes only



*Door F: Nine light, exterior grids:

Painted	Wood Grain
• OP5994-\$135	• OP9435-\$260
• AOP306-\$135	• AOP3087-\$260
Sidelight:	
• OP3335-\$500	• OP3415-\$655
• AOP1365-\$500	• AOP1385-\$655
Transom:	
• OP3355-\$375	• OP3255-\$375
• AOP1395-\$375	• AOP1375-\$375



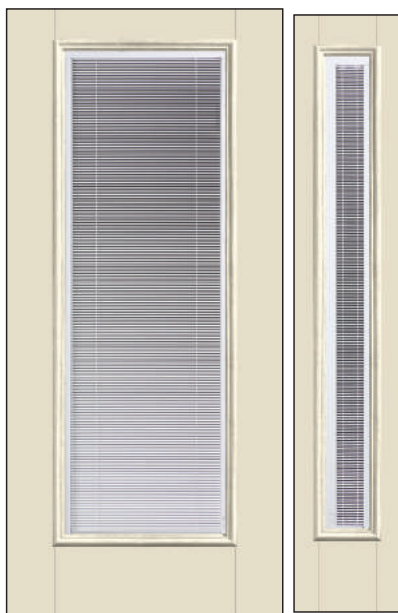
*Door G: Four Light:

Painted	Wood Grain
• OP5995-\$540	• OP9436-\$700
• AOP307-\$540	• AOP3088-\$700
Sidelight:	
• OP3336-\$740	• OP3416-\$745
• AOP1366-\$740	• AOP1386-\$745
Transom:	
• OP3356-\$350	• OP3256-\$350
• AOP1396-\$350	• AOP1376-\$350



*Door H: Half glass, no grids:

Painted	Wood Grain
• OP5996-\$90	• OP9437-\$230
• AOP308-\$90	• AOP3011-\$230
Sidelight:	
• OP33361-\$455	• OP3417-\$540
• AOP1367-\$455	• AOP1387-\$540
Transom:	
• OP3357-\$350	• OP3257-\$350
• AOP1397-\$350	• AOP1377-\$350



*Door F: Nine light, exterior grids:

Painted	Wood Grain
• OP5997-\$370	• OP9438-\$460
• AOP3081-\$370	• AOP3012-\$460
Sidelight:	
• OP3338-\$690	• OP3418-\$750
• AOP1368-\$690	• AOP1388-\$750
Transom:	
• OP3358-\$350	• OP3258-\$350
• AOP1398-\$350	• AOP1378-\$350



*Door F: Nine light, exterior grids:

Painted	Wood Grain
• OP5998-\$170	• OP9439-\$325
• AOP3082-\$170	• AOP3013-\$325
Sidelight:	
• OP3339-\$545	• OP3419-\$620
• AOP1369-\$545	• AOP1389-\$620
Transom:	
• OP3359-\$375	• OP3259-\$375
• AOP1399-\$375	• AOP1379-\$375

• Doors shown for style purposes only

SIDING & SHINGLES



Forest Ridge®, Shadow Ridge®, and Compass®

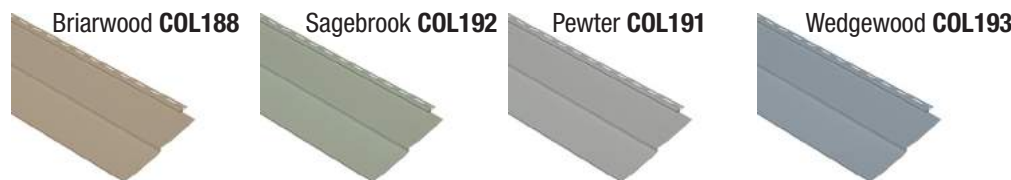


Georgia-Pacific

Group A Standard OP1132 • AOP551



Group B OP1133-**\$6 Per Perimeter Foot** • AOP552-**\$6 Per Perimeter Foot**



Group C *Compass OP1134-**\$11.50 Per Perimeter Foot** • AOP553-**\$11.50 Per Perimeter Foot**



Group D *Compass

OP1135-**\$15 Per Perimeter Foot**
AOP554-**\$15 Per Perimeter Foot**



*Available in Traditional Lap only

Cedar Spectrum Siding



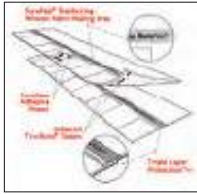
Siding-Vinyl round or shingle in place of standard siding

OP380-**\$275 Per Square**
AOP571-**\$275 Per Square**

Siding-Vinyl round or shingle in place of upgrade siding

OP381-**\$250 Per Square**
AOP572-**\$250 Per Square**

TruDefinition® Duration® Series shingles with SureNail® Technology



Limited Lifetime Warranty	
Algae Resistance:	10 Years
Design:	Bold Contrast, Deep Dimension
Shingle Type:	Laminated
Wind Resistance:	130 mph
Nominal Size:	13 ¹ / ₄ " x 39 ³ / ₈ "



Amber **COL140**



Desert Tan **COL144**



Brownwood **COL141**



Teak **COL151**



Driftwood **COL145**



Onyx Black **COL148**



Estate Gray **COL146**



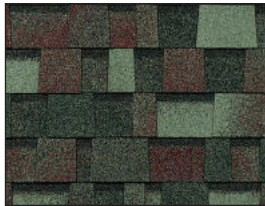
Terra Cotta **COL164**



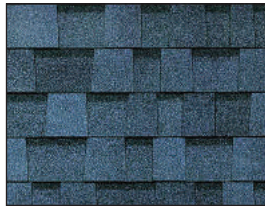
Quarry Gray **COL149**



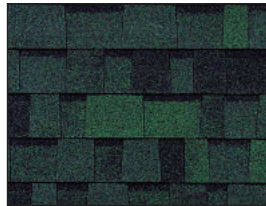
Sierra Gray **COL150**



Colonial Slate **COL143**



Harbor Blue **COL147**

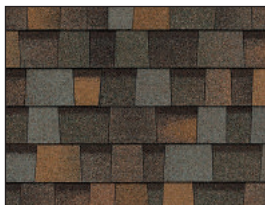


Chateau Green **COL142**

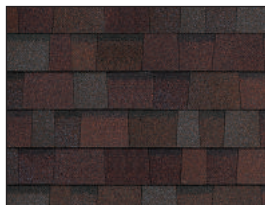


Shasta White **COL152**

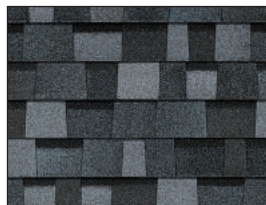
TruDefinition® Duration® Series Designer Colors-OP384-\$12 Per Square Foot



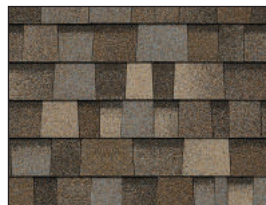
Aged Copper **COL154**



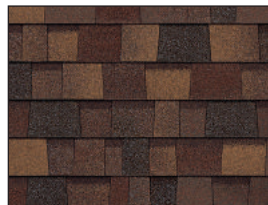
Merlot **COL155**



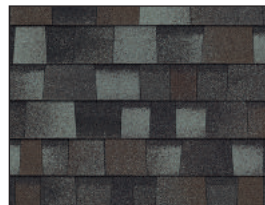
Pacific Wave **COL156**



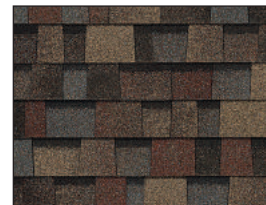
Sand Dune **COL157**



Sedona Canyon **COL158**



Storm Cloud **COL159**



Summer Harvest **COL160**



Construction: 3/4" Solid wood face frames, reinforced and aligned with dowels and adhesive.

Drawers: Front is 3/4" thick. Also have WhisperGlide 75# capacity glides. Deluxe drawer option with 5/8" dovetailed construction and full extension undermount glides with soft-action technology available.

Roll Out Trays: Base cabinet roll out trays optional

Overhead Cabinet Shelves: 3/4" thick fully adjustable overhead shelves

Hinges: 6-way adjustable self closing concealed hinges with limited life time warranty

Warranty: 10-25 year limited warranty depending on cabinets

Cabinet Group A

Square recessed panel overhead and base cabinets-Partial Overlay

**Spring Valley
Oak Amaretto**



**Spring Valley
Oak Pecan**



Ranch/Cape • **OP485**

Two-Story • **OP491**

Ranch • **AOP560**

- Cab Misc42" wall cabinet replace standard 30" - **OP502 \$30**
- Cab Misc-6" rise in wall cabinet, over range or refer-
OP503 \$25 • AOP188 \$25
- Specialty Cab-Add roll out trays in center of base cabinets
KIT/UTL-OP1151 \$400 • AOP561 \$400
- Specialty Cab-Deluxe drawer option for
KIT and UTL-OP481 \$800 • AOP559 \$800

Cabinet Group B

Square recessed panel overhead and base cabinets-Partial Overlay

**Spring Valley
Maple Pecan**



**Spring Valley
Maple Sedona**

**Spring Valley
Maple Kona**

Ranch/Cape • **OP483 \$650**

Two-Story • **OP493 \$1,125**

Ranch • **AOP5610 \$650**

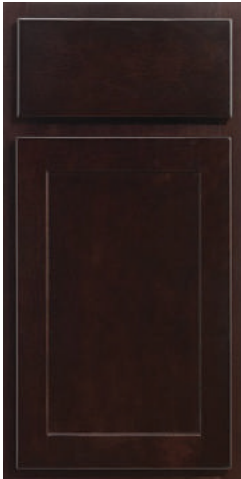
Cabinet Group C

Square recessed panel overhead and base cabinets-Partial Overlay

Spring Valley Hickory Natural



Marlin Maple Kona



Marlin Maple Pecan



Ranch/Cape • OP484 \$850 Two-Story • OP476 \$1,280 Ranch • AOP5603 \$850

Cabinet Group D

Square recessed panel overhead and base cabinets-Partial Overlay

Spring Valley Maple Cotton



Marlin Maple Cotton



Spring Valley Maple Graphite



Spring Valley Maple Nightfall



Marlin Maple Nightfall



Ranch/Cape • OP4861 \$1,000 Two-Story • OP4862 \$1,350 Ranch • AOP5601 \$1,000

CABINET STYLES

Cabinet Group E

Arched door style overhead cabinets and square door style on base cabinets-Partial Overlay

Square recessed panel overhead and base cabinets-Full Overlay



**Seneca Ridge
Oak Amaretto**



**Seneca Ridge
Oak Pecan**



**Ralston
Maple Sedona**



**Ralston
Maple Pecan**



**Ralston
Maple Kona**

Ranch/Cape • OP486 **\$1,600** Two-Story • OP477 **\$1,950**

Cabinet Group F

Square recessed panel overhead and base cabinets-Full Overlay

Arched door style overhead cabinets and square door style on base cabinets-Partial Overlay

**Ralston Maple
Cotton**

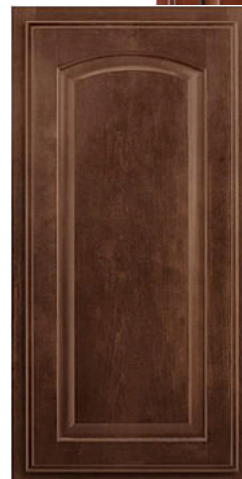
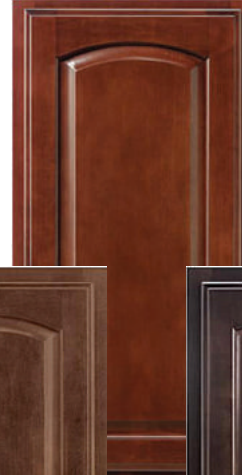


**Ralston Maple
Graphite**

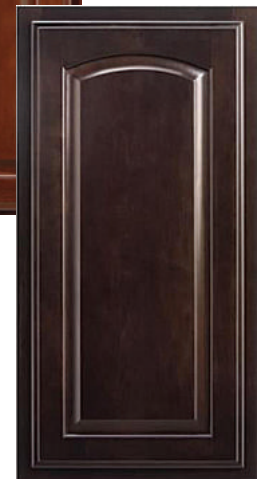


**Ralston Maple
Nightfall**

**Seneca Ridge
Maple Sedona**



**Seneca Ridge
Maple Pecan**



**Seneca Ridge
Maple Kona**

Ranch/Cape • OP492 **\$2,300**
Two-Story • OP1084 **\$2,975**



Standard Range Hoods

-Standard white range hood vented outside.
Hood, microwave, microwave prep

• **OP552-\$150**

-Stainless Steel **OP1164-\$100**

Stainless steel wall mount with ceramic back splash vented outside. Optional with extended glass tile and 36" area around range hood in place of standard 54"

**Shown with optional glass cabinets*

• **OP498 -\$975**



Wood wall mount with 6" rise replacing standard, vented outside, standard without rail

**Shown with optional glass cabinets*

OP497 -\$900 • AOP184 -\$900



Specialty Additions



Wall wine storage cabinet WSC1818 with W1812
OP5211-\$220 • AOP4051-\$220



24" overhead open bookshelf with organizer in place of overhead 2430
OP825-\$215 • AOP420-\$215



Above: Angle overhead cabinet with mullion glass door, arched or square to match cabinets
OP557-\$300 • AOP191-\$375

Not pictured: Appliance garage diagonal
OP517-\$160 • AOP199-\$160



Wall message center on end of cabinets-36in or 42in
OP5212-\$335 • AOP4052-\$335

Specialty Additions

Left: 9" base pull out pantry in place of standard cabinet

OP521-\$350 • AOP404-\$350

Right: 6" overhead "What Not" shelf

• OP513-\$135



Double base waste basket top mount OP854-\$215 • AOP201-\$215



Base angle cabinet OP510-\$400 • AOP192-\$400



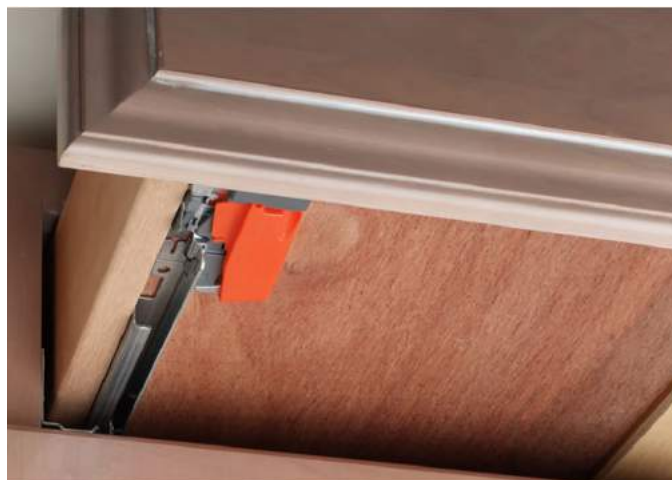
36" Pantry with Swing out racks in place of 18" OP489-\$1,200 • AOP5614-\$1,200



3-Drawer 30" base pots and pans drawer in place of standard cabinet OP520-\$200 • AOP402-\$200

Not Pictured 36" base pots and pans 2-drawer in place of standard cabinet OP557-\$300 • AOP5617-\$300

Specialty Additions



Deluxe Drawer option for kitchen and utility available with classic line only. **OP481-\$800 • AOP559-\$800**

Thicker core drawers-5/8" thick drawer core provides a remarkably solid frame.

Dovetail drawer construction-durable and includes the SoftAction+Technology on drawers only for a completely silent and effortless closing movement.

Full extension drawers-allows the drawer to be completely opened.

Plywood drawer bottom provides durable plywood bottoms to help resist sagging.



Left: Double pantry surround refrigerator

•**OP496-\$1,000**

Right: Enclosed refrigerator 36x69/
stacked washer/
dryer 30x78
opening with 24"
deep overhead
cabinet.

OP504-\$350

AOP189-\$350



Specialty Additions



Left: Universal wall oven unit additional cabinet
OP507-\$685 • AOP409-\$685



Right: Universal wall oven unit in place of base
 and overhead **OP508-\$115 • AOP400-\$115**

33" X 90" with 30" Overhead Cabinets

33" X 96" with 42" Overhead Cabinets

Appliance Opening Width 27" - 31"

Opening Height 23 3/4" - 47 1/4"

Some on site work may be necessary to fit actual appliances



Left: Glass door on wall straight
 cabinet 15" or 18" square or
 arched to match
OP405-\$200 • AOP190-\$200

Not Pictured: Mullion glass
 door with matching interior
 Glass door on corner wall
 cabinet **OP867-\$200**
• AOP437-\$200



Right: Tilt out sink tray
OP518-\$30 • AOP200-\$30



Microwave oven shelf replace 27" of over-
 head cabinet **OP522-\$140 • AOP202-\$140**

SPECIALTY CAB/RANGE HOOD

Specialty Additions



Left: Standard mirror with pendant lights and bank of drawers.



Right: 80" make up vanity standard size will fit in gable end wall bumpouts, comes with 3 pendant lights and mirror.



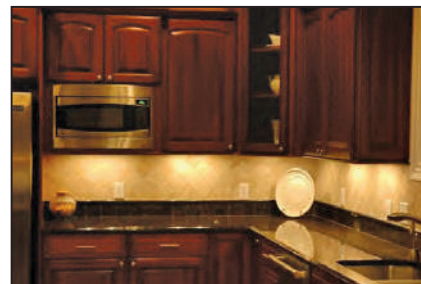
Left: Vanity storage over commode
OP556-\$250
•AOP217-\$250



Medicine cabinet
 24" replace mirror
OP554-\$205 • AOP215-\$205
 36" replace mirror
OP555-\$245 • AOP216-\$245



Left: 18" Bank of drawers
OP523-\$300 • AOP204-\$300



Right: Beadboard panel on back of island
• OP512-\$250
 Under cabinet lighting
• OP901-\$300



Cabinet door knobs and drawer pulls, functional cabinets only
OP1043-\$500 • AOP5618-\$500

Ceramic Tile Colors - 12x24



Natural



Carrara



Gray

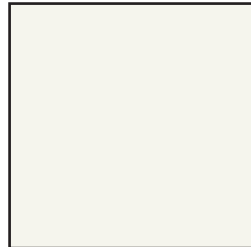
Grout Colors



Silverado

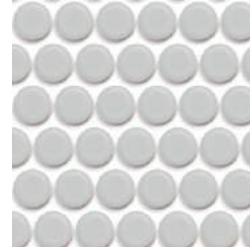


Raven



Bright White

Accent Tiles



Penny



Mosaic

Tile Options

Bathroom

COL95 – Ceramic tile 12x24 w/Silverado Grout

OP1813- Shower OH! With Ceramic Tile IPO 48in. shower and drop in tub-\$2,750

OP1814- Shower OH! With Ceramic Tile IPO 48in. shower/tub-\$3,750

Kitchen

OP498 RANGEHOOD-Stainless Steel wall mount w/ Ceramic Tile, Vented Outside-\$975

OP499- RANGEHOOD-Stainless Steel wall mount w/Subway Tile,Vented Outside-\$975

OP494 – RANGEHOOD-Stainless Steel wall mount w/Decorative Tile, Vented Outside-\$1,075

OP500 - Decorative accent tile between backsplash and upper cabinet-\$60



Right: Subway Tile - White tile with white grout, installed in a brick pattern. (Also available w/ Raven or Silverado grout)

• **OP1144-\$50**

COUNTERTOPS



Standard Countertop Colors



Pebble Piazza
5009-60 **COL23**



Oiled Soapstone
4882-38 **COL32**



White Juparana
4931-38 **COL25**



White Cascade
5003-38 **COL30**



Calacatta Oro
4981-38 **COL35**



Milano Quartz
4726-60 **COL34**



Natural Canvas
7022-58 **COL36**



Butterrum Granite
7732-58 **COL27**



Jamocho Granite
7734-58 **COL31**



White Carrara
4924-38 **COL231**

Optional HD/FX180 Countertop Colors- \$9 Per Lineal Foot



Bella Noche
1820K-35 **COL42**



Bianco Ramano
1872K-35 **COL45**



Italian White di Pesco
4954-22 **COL511**



Typhoon Ice
4952K-22 **COL28**



Winter Carnival
1874K-35 **COL40**



Crema Mascarello
3422-RD **COL39**



Dolce Vita
3420-46 **COL55**



Calacatta Marble
3460-46 **COL38**



Argento Romano
6697-46 **COL512**



Azul Aran
9303-RD **COL513**



Silver Flower Granite
9305-43 **COL517**



Antique Mascarello
3466-R **COL51**



Fantasy Marble
9302-34 **COL514**



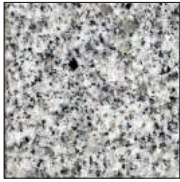
Cafe Azul
6319-RD **COL515**



Jet Sequoia
3476-46 **COL516**

Optional VanitEase Lav Countertop Colors

Granite



Meteorite G1-903
COL90



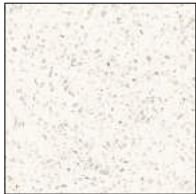
Wheat G1-902
COL89



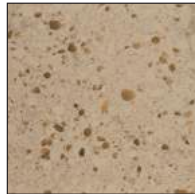
Tigerskin White G1-904
COL85

Optional Quartz Countertop Colors-Group A

\$175 Per Lineal Ft.



Cloud White
COL2182



Toffee
OP2158



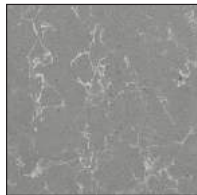
Antique Pearl
OP2161



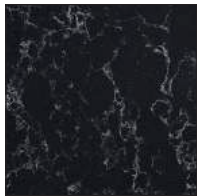
Venetia Cream
COL2173



Strarus White
COL2179



Concrete Carrara
COL76

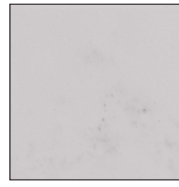


Onyx Carrara
COL69



Coarse Carrara
COL2181

Quartz



Tempest Carrara Q-1007
COL86



Carrara Verta Q-3009
COL87



Terra Grey Q-3012
COL91

Optional Quartz Countertop Colors-Group B

\$200 Per Lineal Ft.



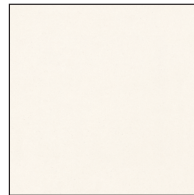
Grigione
COL65



London Sky
COL217



Neve
OP2167



Snow White
COL2184



Dove Grey
COL77



Caraway
COL80



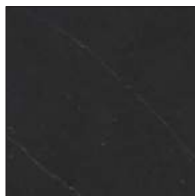
Marble Mist
COL2171



Ashen Grey
COL72

Optional Quartz Countertop Colors-Group C

\$225 Per Lineal Ft.



Portoro
COL66



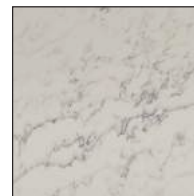
Versilia Grigio
COL2177



Pearl Stone
COL2164



Valente Pearl
COL2176



Bianco Dolomite
COL2163



Calacatta Natura
OP2166



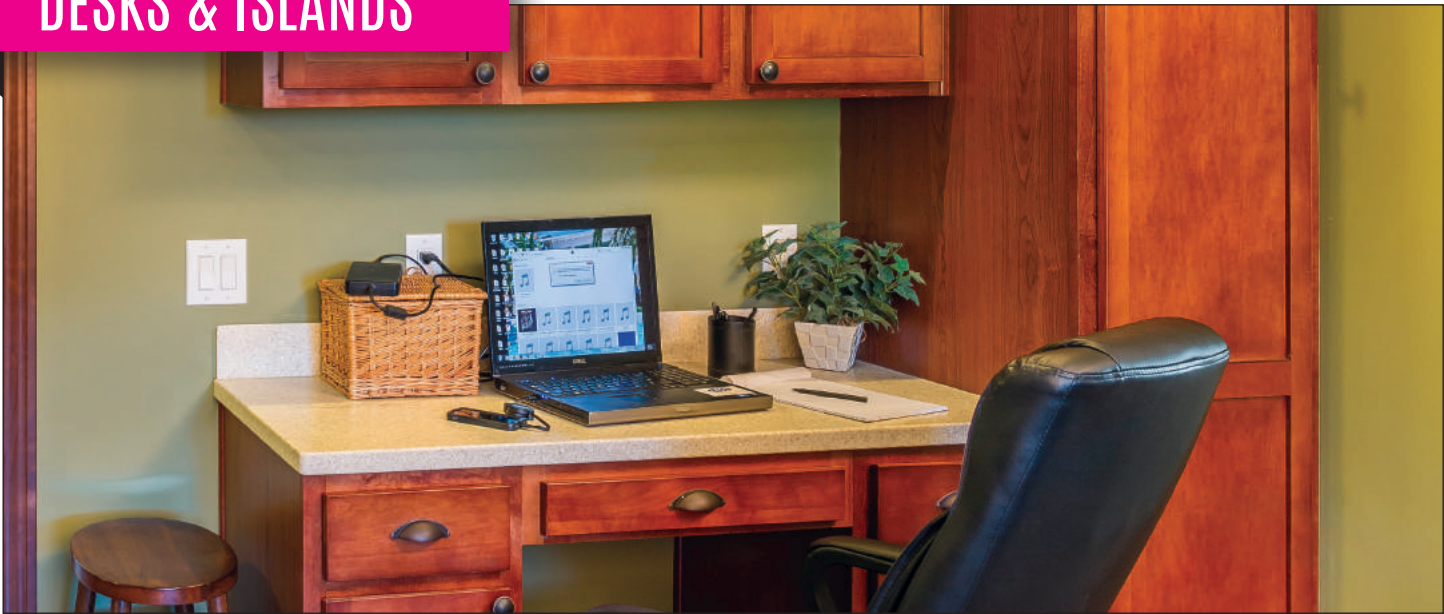
Dove Grey*
COL2166



Venetia Cream*
COL71

*Leather Texture

DESKS & ISLANDS



Standard Desks



Desk A Kitchen unit
OP546-~~\$625~~ • AOP207-~~\$625~~



Desk B 60" hall unit
OP547-~~\$900~~ • AOP208-~~\$900~~



Desk C 57"x57" corner unit
OP548-~~\$1,050~~ • AOP209-~~\$1,050~~



Desk D 81" office unit
OP549-~~\$1,350~~ • AOP210-~~\$1,350~~



Desk E 135" office unit
OP550-~~\$2,250~~ • AOP211-~~\$2,250~~

Islands



Left: Island A 48" Island with 1" overhang all sides and receptacle on (1) end • **OP905-\$670**



Right: Island B 48" Island with 1" overhang on front and sides and 11" overhang on backside and receptacle on (1) end • **OP907-\$680**

Left: Island I 72" Island with overhang, kneehole on backside, glass doors arched or square by style on (1) end and solid doors on opposite end, fluted legs at each corner and receptacle on backside of solid door cabinet • **OP914-\$1,780**



Right: Island J 60" Island with 1" overhang on front and one side, raised bar with 13" overhang on back with leg supports, 24"x42" shelf section on side, receptacle on one side • **OP930-\$1,785**



Left: Island E Angled Island with 1" over-hang on front and sides, 11" overhang on backside with receptacle on end. (Shown with sink, will also accommodate a dish-washer) • **OP912-\$915**



Right: Island F Angled Island with 1" over-hang on front and sides, raised bar with 13" overhang on back side, receptacle on end (Shown with sink, will also accommodate a dish-washer) • **OP911-\$1,540**
Island F stone backing (Not shown) • **OP849-\$775**

DESKS & ISLANDS

Islands



Left: Island K double angled Island with 1" overhang on front and sides, raised bar with 13" overhang on backside, receptacle on both ends. (Shown with sink, will accommodate dishwasher) • **OP931-\$2,160**
With stone backing • **OP851-\$880**

Right: Island L Double angled Island with 1" overhang on front and sides, raised bar with 13" overhang on back with supports, receptacle on end • **OP932-\$950**



Above: Island N 54" Island 54" Island with 11" overhang on back, full leg supports each end and receptacle on one end • **OP934-\$1,285**

Above: Island S 72" Island with overhang on back, (2) pots and pans drawers, and (2) straight legs. Receptacle on one side • **OP9371-\$1,650**
• **AOP5891-\$1,650**

Islands



Island T 9'4" X 4'2" (2) large pots and pans drawers, and (2) straight legs.

OP9341-\$2,755
AOP2111-\$2,755



Island Q 100" X 41"
OP908-\$2,750
AOP1251-\$2,750



Island P 76" X 41"
OP909-\$2,075
AOP1252-\$2,075



Island R 64" x 41"
OP910-\$1,850
AOP1253-\$1,850





Trim Package Standard



Left: Hollow core-wood grain mesa oak doors with standard mesa oak 2 1/4" casing 3 1/4" base trim
OP434 • AOP594



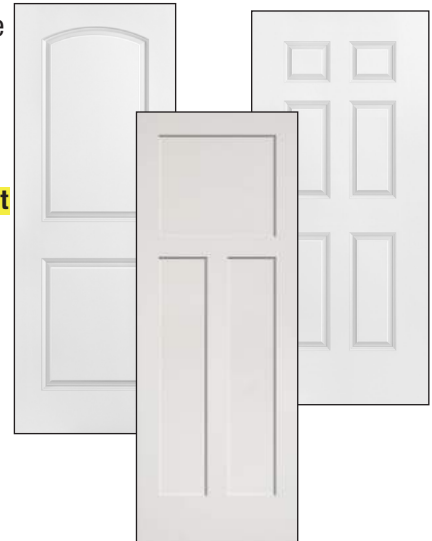
Standard Mesa Oak

Trim Package A

Right: Hollow-core white smooth doors with white 2 1/4" casing and 3 1/4" base trim
OP441-\$0.50 Per Sq Foot
AOP562-\$0.50 Per Sq Foot



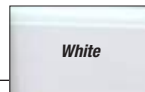
White



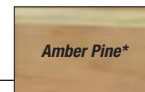
Trim Package B



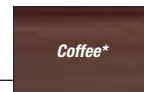
Toasted Cinnamon*



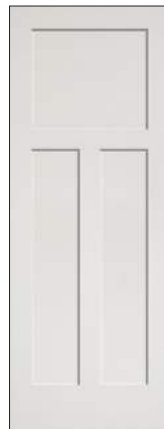
White



Amber Pine*



Coffee*



Solid core white or stained doors with white, toasted cinnamon, amber pine, coffee 2 1/4" casing 3 1/4" base trim
• OP425-\$1.35 Per Sq Foot

2 panel arch top or 3 panel square doors replace standard
• OP1072-\$500

*OPTIONAL

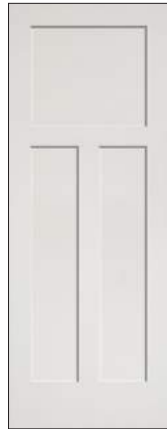
Trim Package C

Toasted Cinnamon*

White

Amber Pine*

Coffee*



Solid core white or stained doors with white, toasted cinnamon, amber pine, coffee 3 1/4" casing and 4 1/4" base trim

• **OP588-\$2 Per Sq Foot**

2 panel arch top or 3 panel square doors replace standard • **OP1072-\$500**

*OPTIONAL

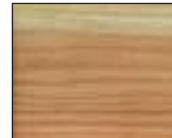
Trim Package D



Solid core American Oak or Alder doors with oak 2 1/4" casing 3 1/4" base or Sappy Cherry 3" casing 4" base trim • **OP856-\$2.70 Per Sq Foot**



Sappy Cherry Square Style*



American Oak*

Trim Package E



Brushed Nickel or Oil Rubbed Bronze barn door hardware on door to match

OP4341-\$250, AOP4621-\$250

Brushed Nickel or Oil Rubbed Bronze door hardware on Alder door

OP4481-\$500, AOP2221-\$500

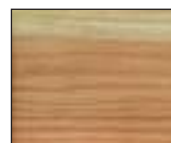


Optional Pocket Doors

OP562-\$210, OP563-\$250
AOP221-\$210, AOP222-\$250

Solid core American Oak doors with American Oak 3 1/4" casing 4 1/4" base trim

• **OP448-\$4 Per Sq Foot**



American Oak*





- 100% Anso® Extra Body CFN (Continuous Filament Nylon)
- Treated with Shaw R2X Soil and Stain Resistance™ Long-Term Protection Against Most Household Stains and preserves and Protects Carpet's Appearance, Reduces Static Buildup
- FHA Certified
- 5-Year Stain Resistance Warranty
- Recyclable Carpet Fiber

Go Softly Carpet

35 Ounce Carpet



Iced Coffee • COL9

Kodiak Bear • COL7

Natural Wood • COL10

Pueblo • COL13

River Bank • COL12



Travertine • COL15

Warm Oatmeal • COL6

Twig • COL8

Wheat • COL5

Blending Upwards - \$15 per lineal foot

40.9 Ounce Carpet



Coastline • COL18

Fog • COL19

Mushroom • COL20

Pleasant Valley • COL21



Tree Swing • COL22

Smoked Pearl • COL17

Encore Plank Flooring

\$5 per sq/ft. (\$3.50 per sq/ft. uninstalled)

- Embossed Wear Layer
- High Definition Printed Film
- Rigid Core
- Patented Interlocking System
- Limited Warranty
- 100% Waterproof



Mitchell LUM-464
COL96



Mayville LUM-465
COL97



Crosby LUM-466
COL98



Mapleton LUM-467
COL99

Encore Tile Flooring



Almont LUM-468
COL100



Ross LUM-469
COL101



Sharon LUM-470
COL102



Verona LUM-471
COL103



STANDARD FLOORING



Livewire II Carpet

- Nylon fibers and Polypropylene backing
- Treated with Shaw R2X Soil and Stain Resistance™
*Long-Term Protection Against Most Household Stains
Preserves and Protects Carpet's Appearance
Reduces Static Buildup*
- Recyclable
- Resilient
- 13 oz. Carpet



Suede
COL199



Brownwood
COL201



Rockslide
COL202

LuxFloor By Congoleum® Vinyl Flooring



Barn Wood Greige
LX277 **COL226**



Barn Wood Vintage
White LX275 **COL197**



Aged European Oak
Farmstead LX310 **COL1284**



Trinsic Modern Brown
LX320 **COL1285**



Rustic Plank Antique Bronze
LX151 **COL228**



Meteor Hillsborough
Beige LX300 **COL117**



Rockport Greyhound
LX285 **COL1287**



Travertino White Dove
LX305 **COL227**



Aged European Oak
Natural LX311 **COL198**



Saddle Ridge
Weatherwood LX295 **COL196**



Blinds and Columns



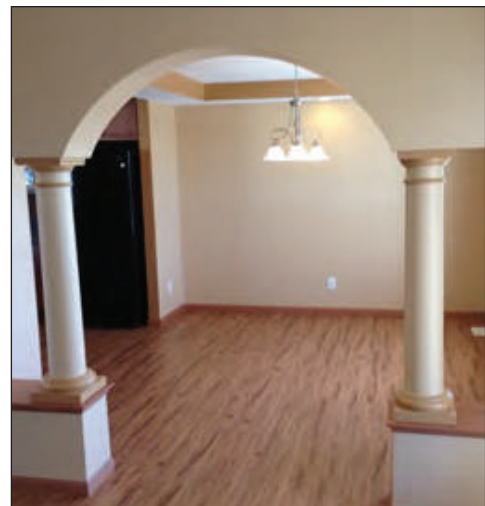
Left: Blinds 2" faux white wood available on vinyl windows excludes picture and transom
OP624-\$60 • AOP277-\$60

Right: Fluted wood column to match trim per pair
OP614-\$500 • AOP267-\$500

Left: Round painted column (shown with optional tray ceiling)
OP613-\$300 • AOP266-\$300

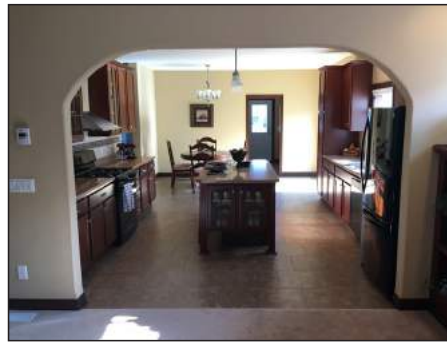
Right: Grand Archway 5' arch with Victorian or fluted columns, wood capped 1/4 walls • **OP1042-\$750**

Not Pictured: Round drywall corners
OP612-\$270 • AOP265-\$270



Drywall Options

All interior decorative wood components added will match trim color.

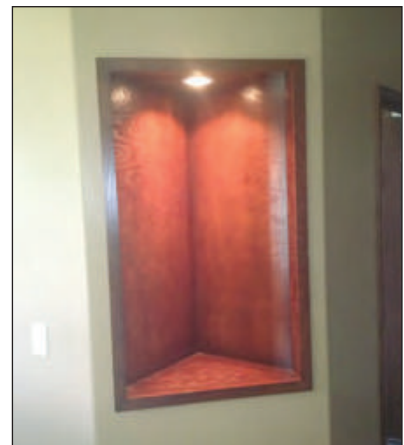


Left: Drywall arch (shown with optional wood columns)
 4 foot **OP615-\$75 • AOP268-\$75**
 5 foot **OP616-\$75 • AOP269-\$75**

Right: Large opening drywall arch (inset picture shown with wood columns) **OP617-\$75 • AOP270-\$75**

Left: Tray ceiling with 4 recessed can lights **OP620-\$550 • AOP273-\$550**

Right: Art Niche wood stained to match trim • **OP864-\$375**



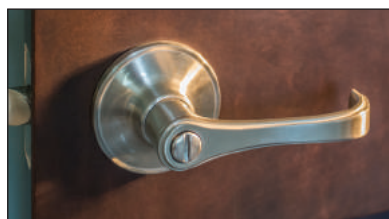
Left: Coffered Ceiling w/white crown moulding, see print • **OP1070-\$2,000**

Right: Closet Organizer Component Additional. White Only **OP6220-\$450**
 • **AOP2750-\$450**

Interior Handles

Left: Interior lever handle-Standard brushed nickel **OP622 • AOP275**

Right: Interior lever handle-Optional rustic bronze **OP623-\$100 • AOP276-\$100**





SAMSUNG

Homeowner Samsung Programs

Purchase through Rochester Homes for the best Support and Service, and receive the following exclusive benefits.

- 1 Full year parts and labor plus 30 Day Cosmetic Warranty on all products.
- Dedicated Samsung Builder Service Support Team.
- 3 Year Warranty Program for Samsung packages that include refrigerator and laundry pair.

Friends and Fans Program:

- 1 Year Warranty= Base Package: Range OR Built-in Oven & Cooktop + Microwave OR OTR Microwave OR Hood +Dishwasher
- 3 Year Warranty= Upgrade Package: Base Package Appliances + Refrigerator + Washer & Dryer

SAMSUNG

PACKAGE A-STAINLESS OP7001-\$1,550

All package items are available for individual purchase.



Samsung RT18M6215SR 18 Cu. Ft. Top Mount • OP6671-\$680

- Flex Zone freezer Converts to Refrigerator
- Twin Cooling System – Two evaporators
- Slide & Reach Pantry
- Factory Installed Icemaker
- Energy Star
- 28 3/4" wide



Stainless Range Hood • OP1164-\$80

- Vented Outside



Samsung DW80M2020US Dishwasher • OP6673-\$290

- Quiet Operation – 55 dba
- Digital Leak Sensor
- Stainless Steel Interior Door/ polymer tub
- Nylon Racks
- Adjustable Upper Rack
- Top Controls



Samsung NE59M4310SS Electric Range • OP6672-\$560

- 5.9 Cu. Ft. Capacity Oven
- Hidden Bake Element
- Self Clean
- Wide View Window
- 5 Elements. 2 Dual. One Warming Center

Optional Gas Range to Take Place of Electric Range



Samsung NX58K3310SS Stainless Gas Range • OP6771-\$510

- 5.8 Cu. Ft. Oven Capacity
- Hidden Bake Element
- 5 Burner Flexible Cooktop
- 17K BTU Power Burner
- Manual Clean Oven

Due to Samsung's commitment to improvement in features, technology and specifications appliances are subject to change without notice. In such cases Samsung reserves the right to substitute appliances of greater or equal value.

PACKAGE B-STAINLESS OP7002-\$1,950

All package items are available for individual purchase.

SAMSUNG



**Samsung Side By Side Refrigerator
RS27T5200SR Stainless**

• OP6674-\$990

- 27.5 Cu. Ft.
- LED Lighting
- 4 Tempered Glass Shelves
- In-Door Ice Maker
- External Water/Ice Dispenser



**Samsung ME16K3000AS
OTR Microwave • OP6775-\$170**

- 1.6 Cu. Ft. Oven Capacity
- LED Display
- 300 CFM Ventilation System
- Turntable On/Off



**Samsung DW80M2020US
Dishwasher • OP6673-\$290**

- Quiet Operation – 55 dba
- Digital Leak Sensor
- Stainless Steel Interior Door/
polymer tub
- Nylon Racks
- Adjustable Upper Rack
- Top Controls



**Samsung NE59M4310SS
Electric Range**

• OP6672-\$560

- 5.9 Cu. Ft. Capacity Oven
- Hidden Bake Element
- Self Clean
- Wide View Window
- 5 Elements. 2 Dual. One
Warming Center

Optional Gas Range to Take Place of Electric Range



**Samsung NX58K3310SS
Stainless Gas Range**

• OP6771-\$510

- 5.8 Cu. Ft. Oven Capacity
- Hidden Bake Element
- 5 Burner Flexible Cooktop
- 17K BTU Power Burner
- Manual Clean Oven

Due to Samsung's commitment to improvement in features, technology and specifications appliances are subject to change without notice. In such cases Samsung reserves the right to substitute appliances of greater or equal value.

PACKAGE C-STAINLESS OP7003-\$2,600

Package includes option to replace refrigerator with Family Hub Unit • OP9811-\$700
All package items are available for individual purchase.



Samsung RF263BEAESR French Door Refrigerator

• OP6675-\$1,430

- 26 Cu. Ft.
- Digital Inverter Compressor
- High Efficiency LED Lighting
- Twin Cooling – 2 Evaporators
- Ice Master makes 10 lbs. of ice per day
- Cool Select Pantry Temperature Controlled
- Filtered Water



Samsung ME16K3000AS

OTR Microwave • OP6775-\$170

- 1.6 Cu. Ft. Oven Capacity
- LED Display
- 300 CFM Ventilation System
- Turntable On/Off



Samsung NE59M4320SS Electric Range

• OP6676-\$670

- 5.9 Cu. Ft. Capacity Oven
- Hidden Bake Element
- 5 Elements. 2 Dual. One Warming Center
- Stainless Steel Cooktop and Die Cast Knobs
- Convection Oven



Samsung DW80J3020US

Dishwasher • OP6677-\$360

- Full Stainless Interior
- Digital Leak Sensor
- Quiet Wash 50 dba
- Front Controls with Pocket Handle
- Adjustable Nylon Racks
- Hidden Heat element

Optional Gas Range to Take Place of Electric Range



Samsung NX58H5600SS Stainless Gas Range

• OP6772-\$610

- 5.8 Cu. Ft. Oven Capacity
- Fan Convection Self Clean Oven
- Hidden Bake Element
- 5 Burner Flexible Cooktop
- 17K BTU Power Burner
- Comes with Griddle!

SAMSUNG

PACKAGE D-STAINLESS OP7004-\$3,800

Package includes option to replace refrigerator with Family Hub Unit • OP9811-\$700
 All package items are available for individual purchase.



**Samsung RF28HMEDBSR
 4 Door French Door**

• OP6678-\$2,000

- 28 Cu. Ft.
- Flex Zone Drawer – 4 Temp., Kid Height
- Twin Cooling Plus – 2 Evaporators
- LED Lighting
- Digital Inverter Compressor
- Ice Master makes up to 10 lbs. per day



**Samsung ME18H704SFS
 OTR Microwave • OP6681-\$230**

- 1.8 Cu. Ft. Oven Capacity
- Ceramic Enamel Interior
- LED Display
- Halogen Cooktop and Interior Light
- 400 CFM Ventilation System
- Simple Clean Filter
- Cooking Presets



Samsung NE59M6850SS 
Electric Range • OP6679-\$1,010

- Flex Duo with Dual Door
- Dual Fan Convection
- 5.9 Cu. Ft. Oven Capacity
- 5 Elements – 2 Dual for Flexibility
- Wi-Fi Connectivity Remote Control




**Samsung DW80K5050US
 Dishwasher • OP6682-\$440**

- Stainless Interior
- Digital Leak Sensor
- Quiet Wash 48 dba
- Hidden Heating Element
- Adjustable Nylon Racks
- Storm Wash – 4th spray arm
- Auto Release Door Dry

Optional Gas Range to Take Place of Electric Range



Samsung NX58M6850S 
Stainless Gas Range
 • OP6774-\$1,100

- Flex Duo with Dual Door
- Dual Fan Convection Self Clean Oven
- 5.9 Cu. Ft. Oven Capacity
- 5 Elements – 2 Dual for Flexibility
- Wi-Fi Connectivity Remote Control/Monitor from your smart phone

Due to Samsung's commitment to improvement in features, technology and specifications appliances are subject to change without notice. In such cases Samsung reserves the right to substitute appliances of greater or equal value.



PACKAGE D- BLACK STAINLESS OP7005-\$3,800

Package includes option to replace refrigerator with Family Hub Unit • OP9811-\$700
All package items are available for individual purchase.



Samsung RF28HMEDBSG
4 Door French Door • OP6683-\$2,090

- 28 Cu. Ft.
- Flex Zone Drawer – 4 Temp., Kid Height
- Twin Cooling Plus – 2 Evaporators
- LED Lighting
- Digital Inverter Compressor
- Ice Master makes up to 10 lbs. per day



Samsung ME18H704SFG
OTR Microwave • OP6685-\$280


- 1.8 Cu. Ft. Oven Capacity
- Ceramic Enamel Interior
- LED Cooktop Light
- 400 CFM Ventilation System
- Simple Clean Filter
- Cooking Presets



Samsung DW80K5050UG
Dishwasher • OP6686-\$520

- Stainless Interior
- Digital Leak Sensor
- Quiet Wash 48 dba
- Hidden Heating Element
- Adjustable Nylon Racks
- Storm Wash
- Auto Release Door Dry



Samsung NE59M6850SG 
Free Standing Range
• OP6684-\$1,200

- Flex Duo with Dual Door
- Dual Fan Convection
- 5.9 Cu. Ft. Oven Capacity
- 5 Elements – 2 Dual for Flexibility
- Wi-Fi Connectivity Remote Control

Optional Gas Range to Take Place of Electric Range



Samsung NX58M6850SG
Black Stainless Gas Range
• OP6773-\$1,180

- Flex Duo with Dual Door
- Dual Fan Convection Self Clean Oven
- 5.9 Cu. Ft. Oven Capacity
- 5 Elements – 2 Dual for Flexibility
- Wi-Fi Connectivity Remote Control/ Monitor from your smart phone



In such cases Samsung reserves the right to substitute appliances of greater or equal value.
Due to Samsung's commitment to improvement in features, technology and specifications appliances are subject to change without notice.

PACKAGE E- STAINLESS OP7006-~~\$6,350~~

Package includes option to replace refrigerator with Family Hub Unit • OP9811-~~\$700~~
All package items are available for individual purchase.



Samsung RF28K9070SR 4 Door Flex Stainless • OP6687-~~\$2,180~~

- 28 Cu. Ft.
- Flex Zone – Bottom right can be freezer or refrigerator
- Flex Zone – 4 Temp Settings. Largest fresh food capacity
- LED Lighting
- Triple Cooling – 3 Evaporators
- Ice master makes up to 5 lbs. of ice per day



Samsung DW80K5050US Dishwasher • OP6682-~~\$440~~

- Stainless Interior
- Digital Leak Sensor
- Quiet Wash 48 dba
- Hidden Heating Element
- Adjustable Nylon Racks
- Storm Wash
- Auto Release Door Dry



Samsung NV51K6650DS Double Wall Oven • OP6688-~~\$2,420~~

- Dual True Convection
- Two 5.1 Cu. Ft. Ovens
- Steam Roast, Steam Bake for Professional Results
- Electronic Touch Display
- Wi-Fi Connectivity; Monitor and Control from your smart phone
- Hybrid Clean – Self Clean Plus Steam; 1.5 Hour



Samsung ME18H704SFS OTR Microwave • OP6681-~~\$230~~

- 1.8 Cu. Ft. Oven Capacity
- Ceramic Enamel Interior
- LED Cooktop Light
- 400 CFM Ventilation System
- Simple Clean Filter
- Cooking Presets



Samsung NA30K6650TS 30" Gas Cooktop

• OP6689-~~\$1,190~~

Can Sub for Electric (see page 65)

- WiFi Connectivity; Monitor and Control from your smart phone
- 19K BTU Dual Burner
- 5 Burners
- Blue LED Lit Knobs

Optional Microwave oven to take place of Wall Oven and OTR Micro



Samsung NQ70M6650DS Stainless Microwave Oven Combination • OP6532-~~\$2,700~~

- 5.1 Cu. Ft. Oven/1.9 Cu. Ft. Microwave
- Ceramic Enamel Interior
- Convection Microwave
- Steam Cook Oven for Professional Results
- Dual Fan Convection Oven
- Electronic Touch Display
- Wi-Fi Connectivity Monitor and Control from your smart phone
- Hybrid Clean – Self Clean Plus Steam; 1.5 Hour

Due to Samsung's commitment to improvement in features, technology and specifications appliances are subject to change without notice. In such cases Samsung reserves the right to substitute appliances of greater or equal value.



PACKAGE E- BLACK STAINLESS OP7007-\$6,350

Package includes option to replace refrigerator with Family Hub Unit • OP9811-\$700
All package items are available for individual purchase.



Samsung RF28K9070SG 4 Door Flex Stainless • OP67011-\$2,290

- 28 Cu. Ft.
- Flex Zone – Bottom right can be freezer or refrigerator
- Flex Zone – 4 Temp Settings. Largest fresh food capacity
- LED Lighting
- Triple Cooling – 3 Evaporators
- Ice master makes up to 5 lbs. of ice per day



Samsung DW80K5050UG Dishwasher • OP67014-\$690

- Stainless Interior
- Digital Leak Sensor
- Quiet Wash 48 dba
- Hidden Heating Element
- Adjustable Nylon Racks
- Storm Wash
- Auto Release Door Dry



Samsung NV51K6650DG Double Wall Oven • OP67012-\$2,560

- Dual True Convection
- Two 5.1 Cu. Ft. Ovens
- Steam Roast, Steam Bake for Professional Results
- Electronic Touch Display
- Wi-Fi Connectivity; Monitor and Control from your smart phone
- Hybrid Clean – Self Clean Plus Steam; 1.5 Hour



Samsung ME18H704SFG OTR Microwave • OP6685-\$280

- 1.8 Cu. Ft. Oven Capacity
- Ceramic Enamel Interior
- LED Cooktop Light
- 400 CFM Ventilation System
- Simple Clean Filter
- Cooking Presets



Samsung NA30K6650TG 30" Gas Cooktop • OP67013-\$1,280

Can Sub for Electric (see page 65)

- WiFi Connectivity; Monitor and Control from your smart phone
- 19K BTU Dual Burner
- 5 Burners
- Blue LED Lit Knobs



Optional Microwave oven to take place of Wall Oven and OTR Micro



Samsung NQ70M6650DG Black Stainless Microwave Oven Combination • OP6531-\$2,580



- 5.1 Cu. Ft. Oven/1.9 Cu. Ft. Microwave
- Ceramic Enamel Interior
- Convection Microwave
- Steam Cook Oven for Professional Results
- Dual Fan Convection Oven
- Electronic Touch Display
- Wi-Fi Connectivity Monitor and Control from your smart phone
- Hybrid Clean – Self Clean Plus Steam; 1.5 Hour

REFRIGERATOR OPTIONS



Samsung French Door Refrigerator

RF263BEAESR • OP6675-**\$1,430**
 RF263BEAESG • OP6361-**\$1,430**

- 26 Cu. Ft.
- Digital Inverter Compressor
- High Efficiency LED Lighting
- Twin Cooling – 2 Evaporators
- Ice Master makes 10 lbs. of ice per day
- Cool Select Pantry Temperature Controlled
- Filtered Water



Samsung Side By Side Refrigerator

RS27T5200SR Stainless
 • OP6363-**\$990**
 RS27T5200SG Black Stainless
 • OP6362-**\$990**

- 27.5 Cu. Ft.
- LED Lighting
- 4 Tempered Glass Shelves
- In-Door Ice Maker
- External Water/Ice Dispenser



Samsung 4 Door Flex Refrigerator

RF28K9070SR Stainless
 • OP6367-**\$2,200**
 RF28K9070SG Black Stainless
 • OP6366-**\$2,290**

- Flex Zone – Bottom right can be freezer or refrigerator!
- Flex Zone – Bottom right has 4 Temp Settings.
- Largest Fresh Food Capacity.
- High Efficiency LED Lighting
- Triple Cooling Plus – 3 Evaporators
- Ice Master makes up to 4 lbs. per day
- Counter Depth option available
 Stainless- **OP6735-\$2,360**
 Black Stainless-
OP67015-\$2,450



Samsung 4 Door French Door Refrigerator

RF30KMEBSR Stainless
 • OP6733-**\$2,020**
 RF30KMEBSG Black Stainless
 • OP6734-**\$2,120**

- 30 Cu. Ft.
- Flex Zone Drawer – 4 Temp., Kid Height
- Twin Cooling Plus – 2 Evaporators
- LED Lighting
- Digital Inverter Compressor
- Ice Master makes up to 10 lbs. per day
- Counter Depth option available
 Stainless- **OP3678-\$2,170**
 Black Stainless-
OP6737-\$2,260

Due to Samsung's commitment to improvement in features, technology and specifications appliances are subject to change without notice. In such cases Samsung reserves the right to substitute appliances of greater or equal value.

FAMILY HUB REFRIGERATOR

REPLACE WITH A FAMILY HUB FRIDGE TO ANY PACKAGE • OP9811-\$700



Samsung Family HUB French Door RF265BEAESR Stainless

- OP6365-**\$2,140**
- RF265BEAESG Black Stainless**
- OP6364-**\$2,140**
- 24 Cu. Ft.
- Wi-Fi Connectivity Family HUB 2.0 (push to 3.0)
- Voice Activation
- See Inside from Anywhere, Order Food On line, Mirror TV, Stream Music, Sync Family Calendars, Whiteboard, Etc.
- Control from your smart phone
- High Efficiency LED Lighting
- Twin Cooling Plus – 2 Evaporators
- Cool Select Pantry



Samsung Family HUB 4 Door Flex RF28N9780SR Stainless

- OP6369-**\$2,890**
- RF28N9780SG Black Stainless**
- OP6368-**\$2,910**
- 28 Cu. Ft.
- Wi-Fi Connectivity Family HUB 3.0
- Voice Activation
- See Inside from Anywhere, Order Food On line, Mirror TV, Stream Music, Sync Family Calendars, Whiteboard, Etc.
- Control from your smart phone
- Flex Zone – Bottom right can be freezer or refrigerator
- Flex Zone – 4 Temp Settings. Largest fresh food capacity
- Triple Cooling Plus – 3 Evaporators
- Ice Master Makes up to 5 lbs. per day
- Counter Depth option available
- Stainless- **OP6511-\$3,210**
- Black Stainless- **OP6736-\$3,310**



Samsung Family HUB 4 Door French Door RF28NHEDBSR Stainless

- OP6732-**\$2,680**
- RF28NHEDBSG Black Stainless**
- OP6731-**\$2,780**
- 28 Cu. Ft.
- Flex Zone Drawer – Kid height.
- Wi-Fi Connectivity Family HUB 2.0 (push to 3.0)
- Voice Activation
- See Inside from Anywhere, Order Food On line, Mirror TV, Stream Music, Sync Family Calendars, Whiteboard,
- Control from your smart phone
- High Efficiency LED Lighting
- Twin Cooling Plus – 2 Evaporators
- Counter Depth option available
- Stainless- **OP6513-\$3,120**
- Black Stainless- **OP6512-\$3,220**



Samsung Family HUB Side by Side RS27T5561SR Stainless

- OP6370-**\$1,690**
- RF28NHEDBSG Black Stainless**
- OP6371-**\$1,790**
- 26.7 Cu. Ft.
- Fingerprint Resistant Finish
- Wi-Fi Connectivity Family HUB 2.0 (push to 3.0)
- Voice Activation
- See Inside from Anywhere, Order Food On line, Mirror TV, Stream Music, Sync Family Calendars, Whiteboard,
- Control from your smart phone
- LED Lighting
- 25W Speaker



In such cases Samsung reserves the right to substitute appliances of greater or equal value. Due to Samsung's commitment to improvement in features, technology and specifications appliances are subject to change without notice.

GAS RANGE/ BUILT IN OPTIONS

SAMSUNG



Samsung Under Cabinet Hood

NK30N7000US Stainless

•OP6536-**\$690**

NK30N7000UG Black Stainless

•OP6535-**\$760**

- 390/600 CFM
- Baffle Filters
- LED Lighting



Samsung 30" Electric Cooktop



NZ30K6330RS Stainless •OP6534-**\$1,120**

NZ30K6330RG Black Stainless •OP6533-**\$1,220**

- 5 Burners – Two Dual
- Rapid Boil Element 3,300 KW
- Blue LED Illuminated Knobs
- WiFi Connectivity – Monitor From your Smart Phone

LAUNDRY OPTIONS



Package A Samsung Top Load Washer/ Dryer Electric White

WA45N3050AW/DV40J3000EW

•OP6641/OP6411-**\$400/\$400**

- 4.0 Cu. Ft. Washer
- 7.2 Cu. Ft. Dryer
- Self Clean Washer
- VRT Vibration Reduction Technology
- Diamond Drum
- Sensor Dry Dryer



Package B Top Load Washer/Dryer Electric White

WA45M7050AW/DV45H7000EW

•OP6412/OP6413-**\$470/\$470**

- 4.5 Cu. Ft. Washer
- 7.5 Cu. Ft. Dryer
- VRT Plus Sensor Vibration Reduction System
- Self Clean Washer
- Sensor Dry Dryer



Package C Front Load Washer/ Dryer Electric White

WF42H5000AW/DV42H5000EW

•OP6414/OP6642-**\$500/\$500**

- 4.2 Cu. Ft. Washer
- 7.5 Cu. Ft. Dryer
- VRT Vibration Reduction System
- Self Clean Washer
- Sensor Dry Dryer
- Smart Care (trouble shoot from phone)
- Optional Pedestals
- **WE357A8W** -Pedestal Drawer



Wifi Enabled

Due to Samsung's commitment to improvement in features, technology and specifications appliances are subject to change without notice. In such cases Samsung reserves the right to substitute appliances of greater or equal value.

LAUNDRY OPTIONS

SAMSUNG



**Package D Front Load Washer/
Electric Dryer**
WF45M5500AW/DVE45M5500W –
White •OP6415/OP6514-**\$600/\$600**
WF45M5500AP/DVE45M5500P –
Black Stainless
•OP6416/OP6417-**\$640/\$640**

- 4.2 Cu. Ft. Washer
- 7.5 Cu. Ft. Dryer
- VRT PLUS SENSOR Vibration Reduction System
- Self Clean Washer
- Sensor Dry Dryer
- Smart Care (trouble shoot from phone)
- Optional Pedestals
WE357A8W-Pedestal Drawer White
• **OP6405-\$190**
WE357A0P-Pedestal Drawer Platinum • **OP6407-\$210**
- Optional Stack Kit-SKK-7A
• **OP6409-\$30**



**Package E Samsung Flex Washer
Dryer**
**TWO WASHERS IN ONE/TWO DRYERS
IN ONE**
WV55M9600AV/DVE55M9600V-
Black Stainless
•OP6403/OP6404-**\$1,100/\$1,100**

- 5.0 + 1.0 Cu. Ft. Washers
- 7.5 Cu. Ft. Dryer + Delicate Dry Center
- Wash and dry 2 loads at once
- Steam Wash/Steam Dry
- Super Speed 30 minute wash
- WiFi Connected Monitor From Smart Phone
- Receive Notifications when cycles end
- Smart Care (trouble shoot from phone)
- Optional Pedestals
WE272N-Pedestal Black Stainless
• **OP6406-\$210**



**Package F Front Load Washer/Electric
Dryer ADD WASH**
WF45K6500AW/DV45K6500EW – White
•OP6418/OP6419-**\$660/\$660**
WF45K6500AV/DV45K6500EV –Black SS
•OP6401/OP6402-**\$710/\$710**

- 4.5 Cu. Ft. Washer /7.5 Cu. Ft. Dryer
- Add a garment any time during wash cycle.
- WiFi Connected Control from Smart Phone
- Receive Notifications when cycles end*
- Super Speed 36 minute wash
- VRT PLUS SENSOR Vibration Reduction System
- Steam Wash/Steam Dryer
- Sensor Dry Dryer
- Smart Care (trouble shoot from phone)
- Optional Pedestals
WE357A8W Pedestal Drawer White
• **OP6405-\$190**
WE357A0P Pedestal Drawer Platinum
• **OP6407-\$210**
- Optional Stack Kit- SKK-7A
• **OP6409-\$30**
- *Smart Adapter needed. **OP6441-\$20**

Due to Samsung's commitment to improvement in features, technology and specifications appliances are subject to change without notice. In such cases Samsung reserves the right to substitute appliances of greater or equal value.



POWERBOT ROBOT VACUUMS



Let the house work, while you play!

- **Visionary Mapping** – Creates Optimal Cleaning Path
- **Full View Sensor** – Avoids Obstacles
- **Cyclone Force Separation** – Powerful Suction
- **WiFi Connectivity** – Control from your smart phone, manage cleaning while you are away.

Works with

Amazon Alexa. Schedule cleaning routines and coverage map.

- **Easy Pass Wheels** - Goes from carpet to hard floor with no adjustment needed.
 - **Edge Clean** – Cleans debris from corners and against walls.
- (All models come with base charging unit and air filters.)

*Rochester Homes, Inc does not include installation, training, or help with operating Samsung POWERbots.



 **POWERbot Turbo VR2AK9350WK**
OP6442-~~\$940~~

- World's Most Powerful Robot Vacuum
- Select and Go – choose rooms to clean
- Point Cleaning- Use remote to order spot clean
- Combo Brush - wide brush head covers large area



 **POWERbot VR2AJ9250WW**
OP6443-~~\$760~~

- 50X More Powerful
- Point Cleaning – Use remote to order spot clean
- Combo Brush- wide brush head covers large area.



 **POWERbot VR2AM7090WD**
OP6444-~~\$660~~

- 40X More Powerful
- Point Cleaning
- Self Clean Brush removes tangled hair from brush
- Low Profile 3.8" tall goes under more furniture



 **POWERbot VR2AM7070W**
OP6445-~~\$570~~

- 40X More Powerful
- Self Clean Brush
- Low Profile

Due to Samsung's commitment to improvement in features, technology and specifications appliances are subject to change without notice. In such cases Samsung reserves the right to substitute appliances of greater or equal value.

 Wifi Enabled